

Appraisal of Bioactive Compounds of Betel Fruit as Antimalarial Agents by Targeting Plasmeppsins 1 and 2: A Computational Approach

by Fatimawali 1

Submission date: 13-Dec-2022 12:43PM (UTC+0700)

Submission ID: 1979939545

File name: Appraisal_of_Bioactive_Compounds_of_Betel_Fruit_as.pdf (2.68M)

Word count: 8830

Character count: 55291



Article

Appraisal of Bioactive Compounds of Betel Fruit as Antimalarial Agents by Targeting Plasmepsin 1 and 2: A Computational Approach

Fatimawali ^{1,2,*}, Trina Ekawati Tallei ^{2,3,*}, Billy Johnson Kepel ⁴, Mohammed Alorabi ⁵, Ahmed M. El-Shehawi ⁵, Widdhi Bodhi ⁴, Sefren Geiner Tumilaar ¹, Ismail Celik ⁶, Gomaa Mostafa-Hedeab ^{7,8}, Amany Abdel-Rahman Mohamed ⁹ and Talha Bin Emran ^{10,*}



Citation: Fatimawali, T.; Tallei, T.E.; Kepel, B.J.; Alorabi, M.; El-Shehawi, A.M.; Bodhi, W.; Tumilaar, S.G.; Celik, I.; Mostafa-Hedeab, G.; Mohamed, A.A.-R.; et al. Appraisal of Bioactive Compounds of Betel Fruit as Antimalarial Agents by Targeting Plasmepsin 1 and 2: A Computational Approach. *Pharmaceuticals* **2021**, *14*, 1285. <https://doi.org/10.3390/ph14121285>

Academic Editors: Giorgio Cozza and Pascal Sonnet

Received: 13 October 2021

Accepted: 3 December 2021

Published: 9 December 2021

Publisher's Note: MDPI stays neutral with regard to jurisdictional claims in published maps and institutional affiliations.



Copyright: © 2021 by the authors. Licensee MDPI, Basel, Switzerland. This article is an open access article distributed under the terms and conditions of the Creative Commons Attribution (CC BY) license (<https://creativecommons.org/licenses/by/4.0/>).

- ¹ Pharmacy Study Program, Faculty of Mathematics and Natural Sciences, Sam Ratulangi University, Manado 95115, Indonesia; sefrentumilaar1@gmail.com
- ² The University Center of Excellence for Biotechnology and Conservation of Wallacea, Institute for Research and Community Services, Sam Ratulangi University, Manado 95115, Indonesia
- ³ Department of Biology, Faculty of Mathematics and Natural Sciences, Sam Ratulangi University, Manado 95115, Indonesia
- ⁴ Department of Chemistry, Faculty of Medicine, Sam Ratulangi University, Manado 95115, Indonesia; billy.kepel@unsrat.ac.id (B.J.K.); widdhibodhi@unsrat.ac.id (W.B.)
- ⁵ Department of Biotechnology, College of Science, Taif University, Taif 21944, Saudi Arabia; maorabi@tu.edu.sa (M.A.); elshehawi@hotmail.com (A.M.E.-S.)
- ⁶ Department of Pharmaceutical Chemistry, Faculty of Pharmacy, Erciyes University, Kayseri 38039, Turkey; ismailcelik@erciyes.edu.tr
- ⁷ Pharmacology Department, Health Sciences Research Unit, Medical College, Jouf University, Sakaka 72446, Saudi Arabia; gomaa@ju.edu.sa
- ⁸ Pharmacology Department, Faculty of Medicine, Beni-Suef University, Beni Suef 62521, Egypt
- ⁹ Department of Forensic Medicine and Toxicology, Zagazig University, Zagazig 44519, Egypt; aabdaziz@zu.edu.eg
- ¹⁰ Department of Pharmacy, BGC Trust University Bangladesh, Chittagong 4381, Bangladesh
- * Correspondence: fatimawali@unsrat.ac.id (F.); trina_tallei@unsrat.ac.id (T.E.T.); talhabmb@bgctub.ac.bd (T.B.E.); Tel.: +62-812-4408-855 (F.); +62-811-4314-880 (T.E.T.); +880-01819-942214 (T.B.E.)

Abstract: In many countries, the fruit of betel (*Piper betle* Linn) is traditionally used as medicine for treating malaria. It is a fatal disease, and existing medications are rapidly losing potency, necessitating the development of innovative pharmaceuticals. The current study attempted to determine the compounds in the n-hexane fraction of betel fruit extract and investigate the potential inhibition of bioactive compounds against aspartic protease plasmepsin 1 (PDB ID: 3QS1) and plasmepsin 2 (PDB ID: 1LEE) of *Plasmodium falciparum* using a computational approach. The ethanol extract was fractionated into n-hexane and further analyzed using gas chromatography-mass spectrometry (GC-MS) to obtain information regarding the compounds contained in betel fruit. Each compound's potential antimalarial activity was evaluated using AutoDock Vina and compared to artemisinin, an antimalarial drug. Molecular dynamics simulations (MDSs) were performed to evaluate the stability of the interaction between the ligand and receptors. Results detected 20 probable compounds in the n-hexane extract of betel fruit based on GC-MS analysis. The docking study revealed that androstan-17-one,3-ethyl-3-hydroxy-, (5 alpha)- has the highest binding affinity for plasmepsin 1 and plasmepsin 2. The compound exhibits a similar interaction with artemisinin at the active site of the receptors. The compound does not violate Lipinski's rules of five. It belongs to class 5 toxicity with an LD₅₀ of 3000 mg/kg. MDS results showed stable interactions between the compound and the receptors. Our study concluded that androstan-17-one,3-ethyl-3-hydroxy-, (5 alpha)- from betel fruit has the potential to be further investigated as a potential inhibitor of the aspartic protease plasmepsin 1 and plasmepsin 2 of *Plasmodium falciparum*.

Keywords: *Piper betle*; betel fruit; malaria; in silico; protease inhibitor; plasmepsin

1. Introduction

Malaria is an infectious disease that is very widespread worldwide, affecting 100 countries with tropical and subtropical climates. Every year in the world, 300–500 million cases occur, resulting in 1–3 million deaths [1]. The disease is transmitted by mosquito vectors carrying unicellular parasites of the genus *Plasmodium*. Plasmodia are obligate intracellular parasites capable of infecting and replicating in erythrocytes following a silent replication phase in the liver. Four species (*P. falciparum*, *P. malariae*, *P. ovale*, and *P. vivax*) have traditionally been recognized as natural causes of human infection, but the recent increase in malaria cases caused by *Plasmodium knowlesi* in Southeast Asia has led physicians to consider it the fifth parasite that causes malaria in humans [2].

Today, the availability of safe, effective, practical, and economically affordable anti-malarial drugs has improved, resulting in reduced mortality from the disease. Several drugs have been developed that inhibit or kill the asexual form of the parasite in human erythrocytes, such as quinine, chloroquine, pyrimethamine, sulfonamides, sulfones, and artemisinin derivatives. The problem is that these drugs have mostly failed in the healing process due to parasites that have become resistant to antimalarial drugs [3–5]. There are several reasons for the resistance of the parasites to these drugs. For example, parasites do not have an active site to bind chloroquine, so this drug cannot be concentrated in erythrocytes [6]. Various attempts have been made to develop more effective antimalarial drugs. One of them is through utilizing a computer simulation approach.

In *Plasmodium falciparum*, there are three different classes of proteases responsible for hemoglobin degradation, including aspartic proteases (plasmepsin I, II, IV, and HAP), cysteine proteases (falcipain-2 and -3), and metalloproteases (falcilysin) [7]. Plasmepsin is synthesized in the form of an inactive precursor (membrane-bound proplasmepsin) and processed into mature plasmepsin and falcipain, which are categorized as cysteine proteases [8]. Because plasmepsin and falcipain are involved in the degradation of hemoglobin necessary for the proliferation of parasites in the body, they have been targets of anti-malarial drug development for decades [7,8]. Among these two proteins, plasmepsin is considered to be the ideal target for antimalarial drugs [9]. By targeting this protein, the parasite's life cycle can be inhibited [10]. In addition, an antimalarial drug currently on the market, artemisinin, is targeted to inhibit the performance of both plasmepsin 1 and plasmepsin 2 [11].

The discovery of new drugs is labor-intensive and time-consuming. However, this process can at least be shortened through initial screening using a computational method. This strategy aims to improve the efficiency of the simulation and calculation procedures used in drug design, offering the in silico method as a complement to the in vitro and in vivo approaches that are frequently utilized in the process of drug discovery [12]. Using an in silico-based drug design approach, the difference in ligand and receptor bond energies is exploited between the target site of the parasite and the putative drug molecule. Stronger interactions displayed by some molecules compared to reference molecules represent potential drug candidates [7].

Several previous in silico studies have been conducted to identify antimalarial compounds. Bioactive flavonoid compounds from the roselle plant (*Hibiscus sabdariffa* L.) as an antimalarial compound against plasmepsin 1 and plasmepsin 2 produce a lower docking score than artemisinin, indicating that these compounds have better potential activity for the aspartic protease enzyme [13]. The results of pharmacological and molecular docking of phytol from *Moringa oleifera* demonstrated that this bioactive compound has potential as an antimalarial drug [14].

In pharmacological studies, the fruit and leaves of green betel (*Piper betel* Linn) have health and health-related benefits, including analgesia [15], anti-ulcer, anti-allergic [16], antibacterial [17–20], anti-mosquito larvae [21], antioxidant [22], and insect repellent properties [23]. Betel fruit has antimalarial activity in vivo in Wistar rats, which was administered by mixing it with mayana leaves, honey, and egg yolk [1]. This present study used the GC-MS method to determine the bioactive chemicals present in the n-hexane fraction of

betel fruit grown in North Sulawesi. The identified compounds were then analyzed in silico to determine their potential for inhibiting the aspartic proteases plasmepsin 1 and 2 from *P. falciparum* and compared to artemisinin, a standard antimalarial drug.

2. Results

2.1. GC-MS Analysis

According to GC-MS analysis, the n-hexane fraction of the betel fruit extract recorded a total of 10 readable peaks, corresponding to a total of 20 probable bioactive compounds (Figure 1). These compounds were recognized by relating their peaks' retention times, peak area (%), height (%), and mass spectral fragmentation patterns to those of known compounds documented by the NIST (National Institute of Standards and Technology) mass spectra database and library. The chemical names of the bioactive compounds are shown in Table 1. Each retention time produces three probable compounds. There are some that produce the same probable compound, and some that are different, so all the probable compounds are considered results based on the database used.

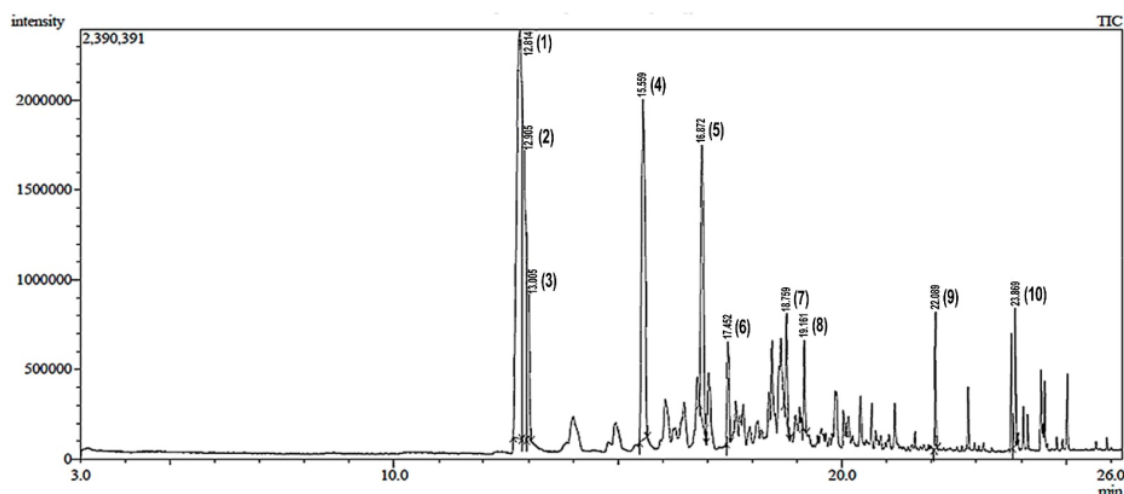


Figure 1. Total ionic chromatogram (TIC) of the n-hexane fraction of the betel fruit extract. The numbers (1)–(10) represent each peak, which corresponds to the information in Table 1.

Table 1. Compounds from the n-hexane fraction of betel fruit extract identified using GC-MS analysis.

Peak	Retention Time (min)	Probable Compound Name #Hit1	Probable Compound Name #Hit2	Probable Compound Name #Hit3	Retention Area (%)
1	12.814	Phenol, 2-methoxy-3-(2-propenyl)-	Phenol, 2-methoxy-4-(2-propenyl)-	Phenol, 2-methoxy-4-(2-propenyl)-	32.22
2	12.905	4-Nitroisopropylbenzene	4-Nitroisopropylbenzene	3-Nitroisopropylbenzene	16.99
3	13.005	Guaiaicol, 3-allyl-	p-Eugenol	p-Eugenol	7.10
4	15.559	Benzoic acid, 2,4-dimethyl-	Benzoic acid, 2,4-dimethyl-	Benzoic acid, 2,6-dimethyl-	18.86
5	16.872	Delta-Cadinene	delta-Cadinene	delta-Cadinene	11.85
6	17.452	Nerolidol	Nerolidol b (cis or trans)	d-Nerolidol	3.04
7	18.759	alpha-Cadinol	Epiglobulol	Torreyol	2.84
8	19.161	Androstan-17-one, 3-ethyl-3-hydroxy-, (5 alpha)-	Longipinocarveol, trans-	Neoclovenoxid-alcohol	1.95
9	22.089	Hexadecanoic acid, methyl ester	Hexadecanoic acid, methyl ester	Hexadecanoic acid, methyl ester	2.37
10	23.869	9-Octadecenoic acid, methyl ester	9-Octadecenoic acid (Z)-, methyl ester	9-Octadecenoic acid (Z)-, methyl ester	2.78

2.2. ADME Analysis

All probable compounds detected were used as ligands and then examined for their pharmacokinetic properties using ADME (absorption, distribution, metabolism, and excretion) tools. Table 2 summarizes the findings. According to this finding, all the probable compounds detected in betel fruit comply with Lipinski's rule of five (Ro5), except neoclovenoxid-alcohol, which indicates that these compounds would be likely orally active medicine in humans. The Ro5 criteria are as follows: (i) the molecular weight is ≤ 500 g/mol; (ii) the number of H-bond acceptors is ≤ 10 ; (iii) the number of H-bond donors is ≤ 5 ; (iv) the log *p*-value (lipophilicity) is ≤ 5 ; and (v) the molar refractivity should be between 40 and 130.

Table 2. Lipinski's rule of the plasmepsin protease potential inhibitors.

Ligand Properties	PubChem ID	Mol. Weight < 500 g/mol	No. H-Bond Donors < 5	No. H-Bond Acceptors < 10	Log <i>p</i> < 5	No. of Violation
Androstan-17-one, ethyl-3-hydroxy-, (5 alpha)-Torreyol	14681481	318.50	1	2	4.4	0
Delta-cadinene	11990360	222.37	1	1	3.3	0
Epiglobulol	12306054	204.35	0	0	3.8	0
Longipinocarveol, trans-	11858788	222.37	1	1	3.7	0
Alpha-Cadinol	534645	220.35	1	1	3.8	0
Neoclovenoxid-alcohol	6431302	223.37	3	5	3.78	0
9-Octadecenoic acid, methyl ester	16211877	220.35	1	6	3.22	1
d-Nerolidol	5280590	34.06	1	1	0.57	0
Nerolidol	5356544	194.31	1	1	3.54	0
Benzoic acid, 2,4-dimethyl-	5284507	222.37	1	1	4.19	0
Nerolidol b (cis or trans)	11897	150	1	2	2	0
Eugenol	131753171	233.26	1	3	4.5	0
3-Nitroisopropylbenzene	3314	164	1	2	2.2	0
4-Nitroisopropylbenzene	591251	165.19	0	2	2.07	0
Benzoic acid, 2,6-dimethyl-	15749	165	0	2	2.12	0
Phenol, 2-methoxy-3-(2-propenyl)-	12439	150	1	2	2.3	0
Phenol, 2-methoxy-4-(2-propenyl)-	596373	125	1	2	2.98	0
Hexadecanoic acid, methyl ester	3313	125	1	3	2.9	0
Guaicoal	8181	270	0	2	5.6	0
Artemisinin (control)	460	312	5	6	0.05	0
	68827	282.33	0	5	2.8	0

2.3. Toxicity Analysis

Several parameters in the toxicity analysis included LD₅₀, predicted toxicity class, hepatotoxicity, carcinogenicity, immunotoxicity, mutagenicity, and cytotoxicity. Toxicity levels are classified as follows: classes 1 and 2 (fatal if swallowed), class 3 (toxic if swallowed), class 4 (harmful if swallowed), class 5 (maybe harmful if swallowed), and class 6 (non-toxic). As shown in Table 3, based on their respective LD₅₀ (mg/kg), seven compounds are classified as harmful if swallowed (class 4), one compound is non-toxic (class 6), and the remaining compounds may be harmful if swallowed (class 5). None of the compounds demonstrated mutagenicity or cytotoxicity. Benzoic acid, 2,4-dimethyl- and benzoic acid, 2,6-dimethyl- are predicted to have hepatotoxicity activity with a probability of 0.52. Guaicoal is predicted as carcinogenic with a probability of 0.56. Androstan-17-one, ethyl-3-hydroxy-, (5-alpha)-, Torreyol, longipinocarveol, trans-, alpha-Cadinol, and artemisinin all demonstrated significant immunotoxicity, with probabilities of 0.79, 0.69, 0.62, 0.69, and 0.70, respectively.

Table 3. Toxicity analysis of the five plasmepsin protease potential inhibitors.

Compounds	LD ₅₀ (mg/kg)	Predicted Toxicity Class	Hepatotoxicity (Prediction/ Probability)	Carcinogenicity (Prediction/ Probability)	Immuno- Toxicity (Prediction/ Probability)	Mutagenicity (Prediction/ Probability)	Cytotoxicity (Prediction/ Probability)
2 Androstan-17-one, ethyl-3-hydroxy-, (5-alpha)- Torreyol	3000	5	-/0.52	-/0.78	+/0.79	-/0.96	-/0.82
Torreyol	2830	5	-/0.82	-/0.66	+/0.69	-/0.91	-/0.87
Delta-cadinene	4390	5	-/0.82	-/0.75	-/0.68	-/0.68	-/0.69
Epiglobulol	2000	4	-/0.77	-/0.69	-/0.87	-/0.75	-/0.89
Longipinocarveol, trans-	5000	5	-/0.89	-/0.64	+/0.62	-/0.92	-/0.96
Alpha-Cadinol	2830	5	-/0.82	-/0.66	+/0.69	-/0.91	-/0.87
Neoclovenoxid-alcohol	2000	4	-/0.77	-/0.75	-/0.94	-/0.75	-/0.86
9-Octadecenoic acid, methyl ester	3000	5	-/0.59	-/0.56	-/0.96	-/0.98	-/0.70
d-Nerolidol	5000	5	-/0.81	-/0.65	-/0.99	-/0.91	-/0.81
Nerolidol	5000	5	-/0.81	-/0.65	-/0.99	-/0.91	-/0.81
Benzoic acid, 2,4-dimethyl-	3200	5	+/0.52	-/0.72	-/0.99	-/0.97	-/0.88
Nerolidol b (cis or trans)	5000	6	-/0.75	-/0.66	-/0.99	-/0.92	-/0.79
Eugenol	1930	4	-/0.67	-/0.73	-/0.83	-/0.97	-/0.90
3-Nitroisopropylbenzene	430	4	-/0.51	-/0.52	-/0.86	-/0.57	-/0.79
4-Nitroisopropylbenzene	1000	4	-/0.51	-/0.52	-/0.96	-/0.57	-/0.79
Benzoic acid, 2,6-dimethyl- Phenol,	4480	5	+/0.52	-/0.72	-/0.99	-/0.97	-/0.88
2-methoxy-3-(2-propenyl)- Phenol,	1230	4	-/0.68	-/0.72	-/0.70	-/0.84	-/0.86
2-methoxy-4-(2-propenyl)- Phenol,	916	4	-/0.74	-/0.62	-/0.70	-/0.84	-/0.86
Hexadecanoic acid, methyl ester	5000	5	-/0.58	-/0.55	-/0.90	-/0.83	-/0.70
Guaicoal	520	4	-/0.72	+/0.56	-/0.85	-/0.99	-/0.81
Artemisinin	4228	5	-/0.72	-/0.63	+/0.70	-/0.63	-/0.97

2.4. Molecular Docking Analysis

The docking results revealed that some of the bioactive compounds from the fractionation of n-hexane betel fruit exhibited substantial binding-free energy (BFE) values compared to artemisinin (Table 4). The BFE value of the compounds ranged from -4.7 to -9.1 kcal/mol for plasmepsin 1, and from -4.5 to -8.0 kcal/mol for plasmepsin 2. Meanwhile, artemisinin, which acted as a control, exhibited a BFE value of -7.7 and -6.7 kcal/mol for plasmepsin 1 and 2, respectively.

Table 4. Binding free energy of bioactive compounds of the betel fruit extract.

Ligand Properties	Binding Free Energy (kcal/mol)	
	1LEE (Plasmepsin 2)	3QS1 (Plasmepsin 1)
2 Androstan-17-one, ethyl-3-hydroxy-, (5-alpha)- Torreyol	-8.0	-9.1
Torreyol	-6.6	-6.4
Delta-cadinene	-6.4	-6.3
Epiglobulol	-6.4	-6.3
Longipinocarveol, trans-	-6.1	-7.1
Alpha-Cadinol	-6.0	-6.1
Neoclovenoxid-alcohol	-6.0	-6.0
9-Octadecenoic acid, methyl ester	-5.9	-5.8
d- Nerolidol	-5.8	-6.1
Nerolidol	-5.8	-6.1
Benzoic acid, 2,4-dimethyl-	-5.6	-5.6
Nerolidol b (cis or trans)	-5.4	-5.6
Eugenol	-5.4	-5.5
3-Nitroisopropylbenzene	-5.3	-6.0
4-Nitroisopropylbenzene	-5.2	-5.8
Benzoic acid, 2,6-dimethyl-	-5.0	-5.1
Phenol, 2-methoxy-3-(2-propenyl)-	-5.0	-5.3
Phenol, 2-methoxy-4-(2-propenyl)-	-4.9	-5.0
Hexadecanoic acid, methyl ester	-4.9	-4.9
Guaicoal	-4.5	-4.7
Artemisinin (control)	-6.7	-7.7

The compound **2** androstan-17-one, ethyl-3-hydroxy-, (5 α)- (hereafter referred to as AND) (Figure 2), which showed the best results for 3QS1 and 1LEE, was selected for molecular interaction analysis (Tables 5 and 6). For comparison, the molecular interactions between artemisinin, acting as a control, and 3QS1 and 1LEE are shown in Table 5. Results of the investigation of molecular interactions revealed that AND interacts with residues MetA13, IleA30, SspA32, TyrA75, ValA75, SerA77, PheA109, PheA117, IleA120, GlyA2178, and ThrA21 with 3QS1 (Figure 3). Meanwhile, the interactions shown by artemisinin with the same receptor are with residues MetA13, IleA30, AspA32, TyrA75, SerA77, PheA109, AlaA111, PheA117, IleA120, GlyA217, ThrA218, and SerA219 (Figure 4). It appears that these two compounds bind to the same site of 3QS1, albeit through different types of interactions and at different distances.

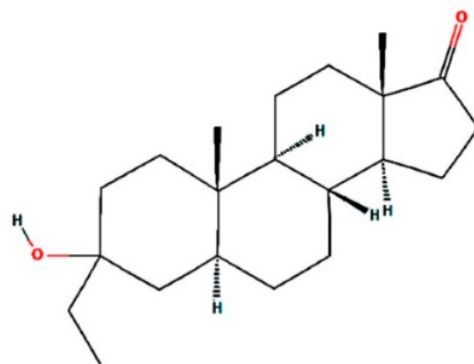


Figure 2. The two-dimensional structure of androstan-17-one, ethyl-3-hydroxy-, (5 α)-.

Table 5. Molecular interactions of AND with 3QS1 and 1LEE.

Receptor Name	Binding Affinity (kcal/mol)	No. H-Bond	Interacting Residues	Distance (Å)	Category	Type of Interaction
Plasmepsin 1 (3QS1)	−9.1	1	Ser(A77)	2.74	H-Bond	Conventional
			Tyr(A75)	3.83	Hydrophobic	Pi-Sigma
			Met(A13)	4.92	Hydrophobic	Alkyl
			Ile(A30)	3.89	Hydrophobic	Alkyl
			Phe(A117)	-	Electrostatic	Van der Waals
			Ile(A120)	-	Electrostatic	Van der Waals
			Phe(A109)	-	Electrostatic	Van der Waals
			Val(A76)	-	Electrostatic	Van der Waals
			Asp(A32)	-	Electrostatic	Van der Waals
			Thr(A218)	-	Electrostatic	Van der Waals
Gly(A217)	-	Electrostatic	Van der Waals			
Plasmepsin 2 (1LEE)	−8	0	Ile(A300)	5.12	Hydrophobic	Pi-Alkyl/ Alkyl
			Val(A78)	4.18	Hydrophobic	Pi-Alkyl/ Alkyl
			Val(A78)	4.53	Hydrophobic	Pi-Alkyl/ Alkyl
			Tyr(A192)	4.93	Hydrophobic	68 Alkyl/ Alkyl
			Gly(A36)	-	Electrostatic	Van der Waals
			Asp(A214)	-	Electrostatic	Van der Waals
			Asp(A34)	-	Electrostatic	Van der Waals
			Tyr(A77)	-	Electrostatic	Van der Waals
			Ile(A123)	-	Electrostatic	Van der Waals
			Ile(A32)	-	Electrostatic	Van der Waals
			Phe(A111)	-	Electrostatic	Van der Waals
			Phe(A120)	-	Electrostatic	Van der Waals
			Ser(A79)	-	Electrostatic	Van der Waals
			Gly(A216)	-	Electrostatic	Van der Waals
Thr(A217)	-	Electrostatic	Van der Waals			
Leu(A292)	-	Electrostatic	Van der Waals			
Phe(A294)	-	Electrostatic	22 Van der Waals			

Table 6. Molecular interactions of artemisinin with 3QS1 and 1LEE.

Receptor Name	Binding Affinity (kcal/mol)	No. H-Bond	Interacting Residues	Distance (Å)	Category	Type of Interaction
Plasmepsin 1 (3QS1)	−7.7	0	Ile(A120)	5.01	Hydrophobic	Pi-Alkyl/Alkyl
			Phe(A109)	4.99	Hydrophobic	Pi-Alkyl/Alkyl
			Tyr(A75)	3.77	Hydrophobic	Pi-Alkyl/Alkyl
			Ile(A30)	4.97	Hydrophobic	Pi-Alkyl/Alkyl
			Ile(A30)	4.98	Hydrophobic	Pi-Alkyl/Alkyl
			Phe(A117)	4.27	Hydrophobic	Pi-Alkyl/Alkyl
			Met(A13)	4.13	Hydrophobic	Pi-Alkyl/Alkyl
			Ala(A111)	-	Electrostatic	Van der Waals
			Ser(A219)	-	Electrostatic	Van der Waals
			Thr(A218)	-	Electrostatic	Van der Waals
			Gly(A217)	-	Electrostatic	Van der Waals
			Ser(A77)	-	Electrostatic	Van der Waals
			Asp(A32)	-	Electrostatic	Van der Waals
Plasmepsin 2 (1LEE)	−6.7	2	Ser(A79)	2.70	H-Bond	Conventional
			Thr(A217)	2.99	H-Bond	Conventional
			Val(A78)	4.40	Hydrophobic	Pi-Alkyl/Alkyl
			Tyr(A77)	5.05	Hydrophobic	Pi-Alkyl/Alkyl
			Tyr(A77)	5.16	Hydrophobic	Pi-Alkyl/Alkyl
			Ile(A123)	4.66	Hydrophobic	Pi-Alkyl/Alkyl
			Ile(A32)	3.86	Hydrophobic	Pi-Alkyl/Alkyl
			Tyr(A192)	-	Electrostatic	Van der Waals
			Ser(A37)	-	Electrostatic	Van der Waals
			Asp(A34)	-	Electrostatic	Van der Waals
			Gly(A216)	-	Electrostatic	Van der Waals
			Ser(A218)	-	Electrostatic	Van der Waals
			Asp(A214)	-	Electrostatic	Van der Waals

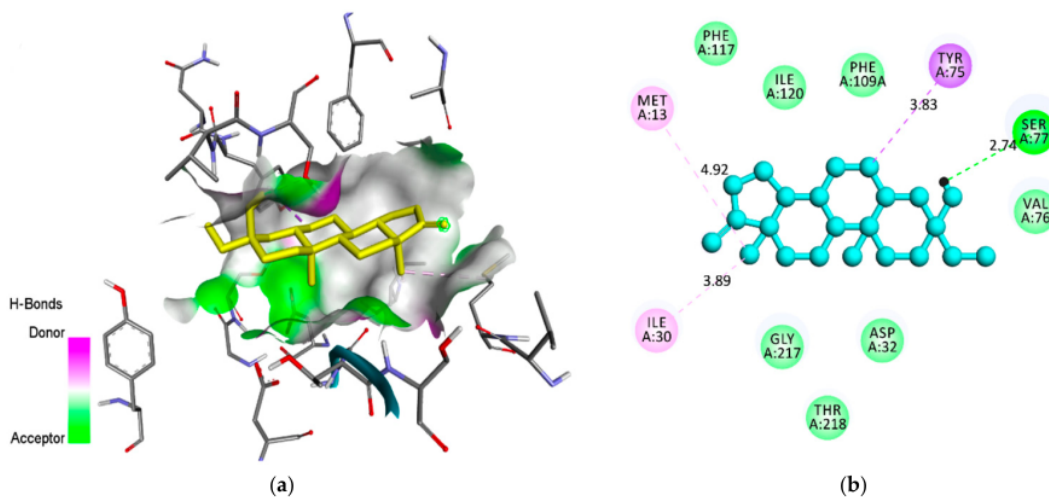


Figure 3. A molecular interaction between AND and 3QS1: (a) AND’s binding position in the active site of 3QS1; (b) the type of interaction of AND that binds to the amino acids of 3QS1.

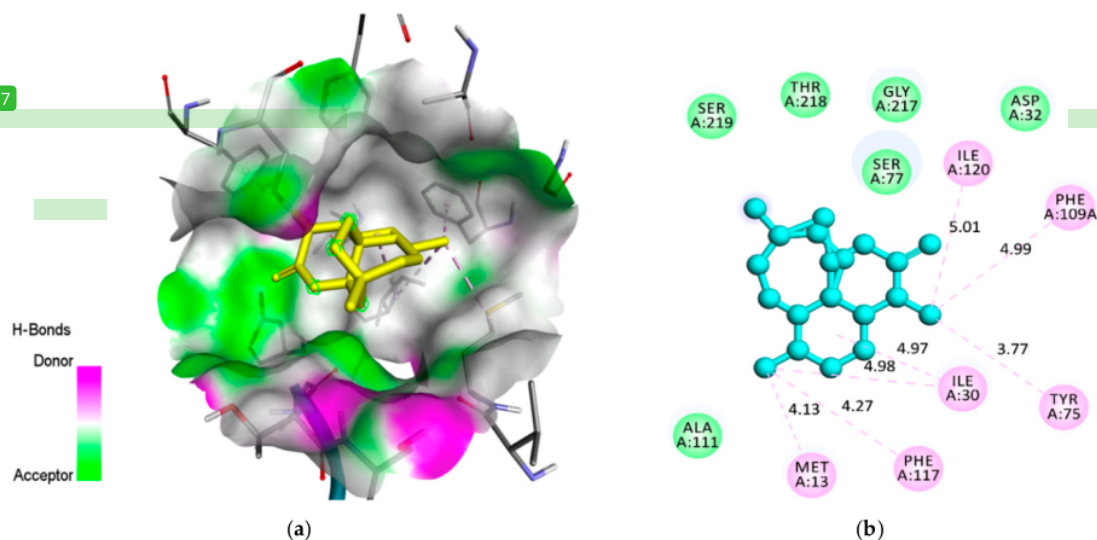


Figure 4. A molecular interaction between artemisinin and 3QS1: (a) artemisinin's binding position in the active site of 3QS1; (b) the type of interaction of artemisinin that binds to the amino acids of 3QS1.

With the 1LEE receptor, AND interacts at residues IleA32, AspA34, GlyA36, TyrA77, ValA78, SerA79, PheA111, PheA120, TyrA192, IleA123, AspA214, GlyA216, ThrA217, LeuA292, PheA294, and IleA300 (Figure 5). Meanwhile, the control ligand artemisinin binds to the ILEE receptor at residues IleA32, AspA34, SerA37, SerA79, TyrA77, ValA78, IleA123, TyrA192, AspA214, GlyA216, ThrA217, and SerA218 (Figure 6). These two compounds appear to share a common binding site, although there are some differences in the binding of the residues and the types of interactions. The binding of AND to the same pocket residue as artemisinin, both to plasmepsin 1 and 2, indicates that AND has potential as an inhibitor for these two receptors.

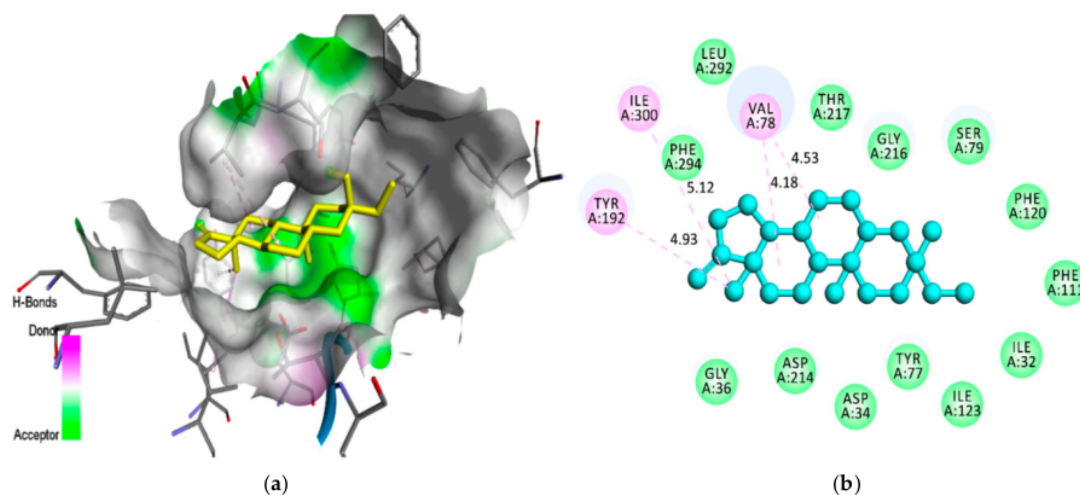


Figure 5. A molecular interaction between AND and 1LEE: (a) AND's binding position in the active site of 1LEE; (b) the type of interaction of AND that binds to the amino acids of 1LEE.

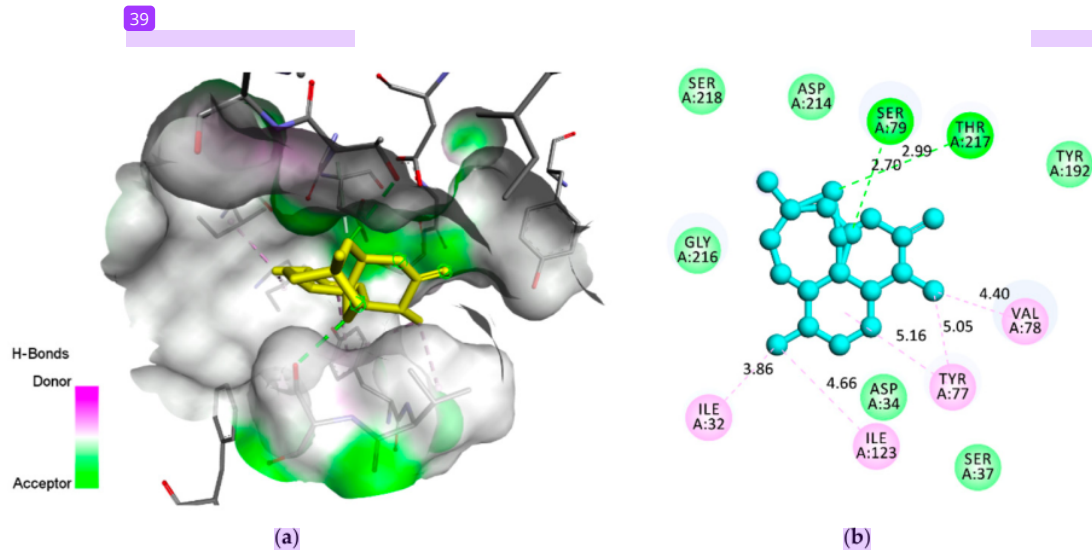


Figure 6. A molecular interaction between artemisinin and 1LEE: (a) artemisinin's binding position in the active site of 1LEE; (b) the type of interaction of artemisinin that binds to the amino acids of 1LEE.

2.5. Molecular Dynamics Simulation

Interactions between AND and 3QS1 were simulated for 50 ns. First, the interaction between AND and 3QS1 was analyzed concerning the protein–ligand complex. Based on the protein backbone atoms, the root-mean-square deviation (RMSD) was calculated to measure changes in the 3QS1 apo form (3QS1-Apo), 3QS1-AND complex (3QS1-AND), and AND (AND-AND) over the time of the simulation. As shown in Figure 6, the 3QS1-AND complex deviated very little and remained constant throughout the simulation. The average RMSD values of 3QS1-Apo, 3QS1-AND, and AND-AND were measured at 0.229 nm, 0.279 nm, and 0.053 nm, respectively.

According to the RMSF analysis shown in Figure 7, the binding of AND to 3QS1 did not negatively alter the fluctuation or stability of the protein. Between the 285th and 289th amino acids, where the apo form showed the highest fluctuation, 3QS1-Apo peaked at 0.39 nm, while the 3QS1-AND holo form peaked at 0.27 nm.

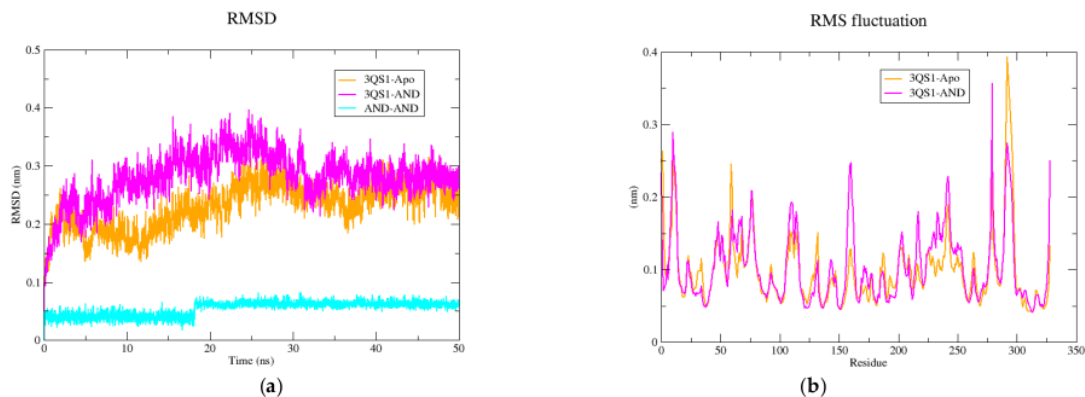


Figure 7. Cont.

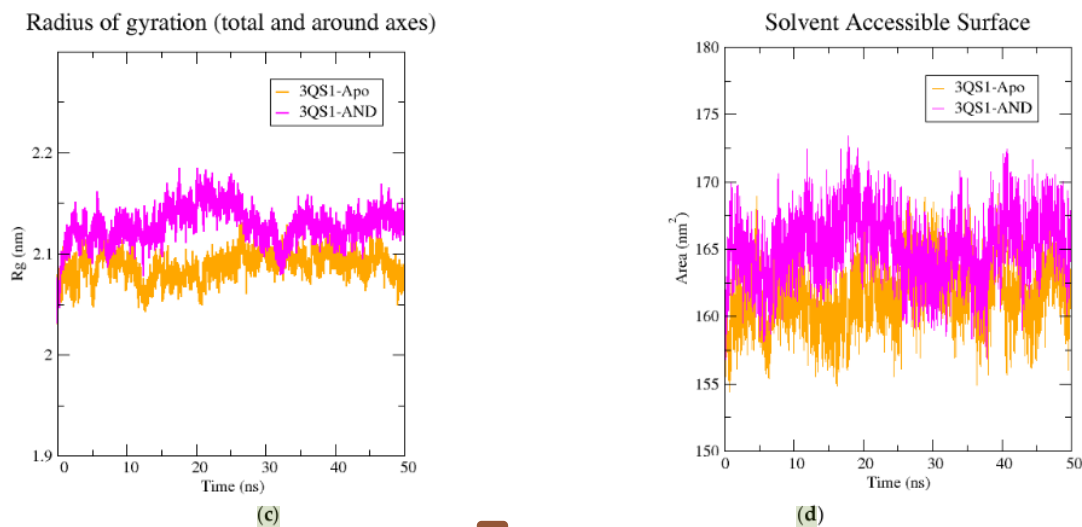


Figure 7. Molecular dynamics simulations analysis: (a) root-mean-square deviation (RMSD); (b) root-mean-square fluctuation (RMSF); (c) radius of gyration (Rg); and (d) solvent accessible surface area (SASA) graphs of the apo form (3Q51-Apo) and holo form (3Q51-AND) over 50 ns.

Another method used in the evaluation of protein compactness is the measurement of radius of gyration (Rg) values. The smaller the Rg values and the fewer deviations they explain, the higher the compactness of the protein. As shown in Figure 7, 3Q51-Apo and 3Q51-AND Rg values with small fluctuations between 2.05 nm and 2.17 nm were obtained. The solvent accessible surface area (SASA) measurements are used to understand changes in the protein's solvent accessible surface area and stability as a result of the interaction of the ligand with the protein. For this purpose, SASA analysis of the apo form of 3Q51 and the AND-linked holo form was performed. As shown in Figure 7, average SASA values for 3Q51-Apo and 3Q51-AND were 161.49 nm² and 165.19 nm² SASA, respectively. The binding of AND to 3Q51 increased the average SASA value of the protein.

The second trajectory analysis was performed to analyze the interaction between AND and 1LEE and their changes over the simulation time. An RMSD analysis was performed to examine changes in protein stability over time. As illustrated in Figure 8, the root-mean-square deviation (RMSD) values for the 1LEE-AND complex was determined to be less than 0.4 nm. The average RMSD values of 1LEE-Apo, 1LEE-AND, and AND-AND were measured at 0.236 nm, 0.277 nm, and 0.042 nm, respectively. According to the root-mean square fluctuation (RMSF) analysis performed to measure protein fluctuation, 1LEE-Apo and 1LEE-AND exhibited quite similar conformational changes, as shown in Figure 8. The interaction between AND and 1LEE did not impair protein stability. According to the radius of gyration (Rg) analysis performed to measure the compactness of 1LEE-Apo and 1LEE-AND, Rg values between 2.05 nm and 2.17 nm were observed. Based on solvent accessible surface area (SASA) analysis to evaluate the solvent-accessible area of the protein–ligand complex, 1LEE-Apo and 1LEE-AND yielded average values of 163.13 and 163.42 nm², respectively. In this study, time-dependent changes in the short-range Lennard-Jones energy between AND and 3Q51-1LEE and the energy of the environment over 50 ns were calculated. As shown in Figure 9, the stable binding energy of AND was measured in both 3Q51-AND and 1LEE-AND. The 3Q51-AND and 1LEE-AND protein–ligand complexes formed average short-range Lennard-Jones energies of -95.2164 and -102.94 kJ mol⁻¹, respectively.

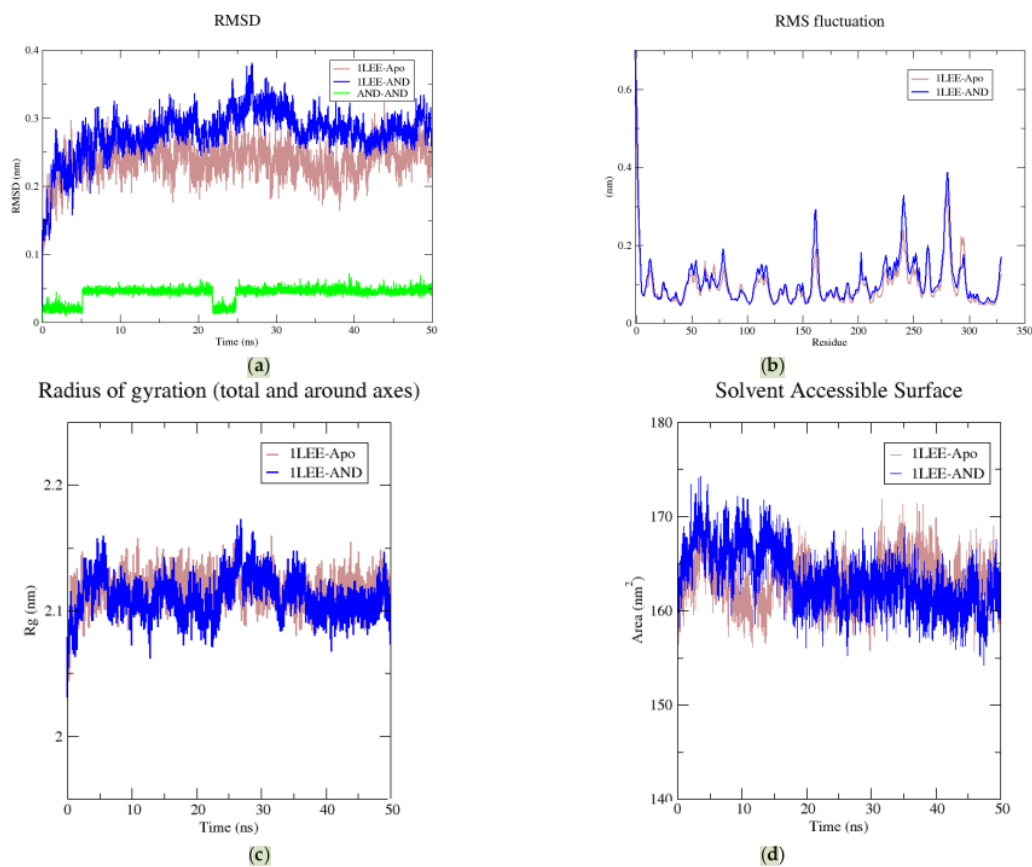


Figure 8. Molecular dynamics simulation of AND with antimalarial target plasmepsin 2; (a) RMSD of apo-(1LEE-Apo) and ligand-bound plasmepsin 2 (1LEE-AND), (b) RMS fluctuation, (c) Rg, and (d) SASA values during the period of 50 ns simulation.

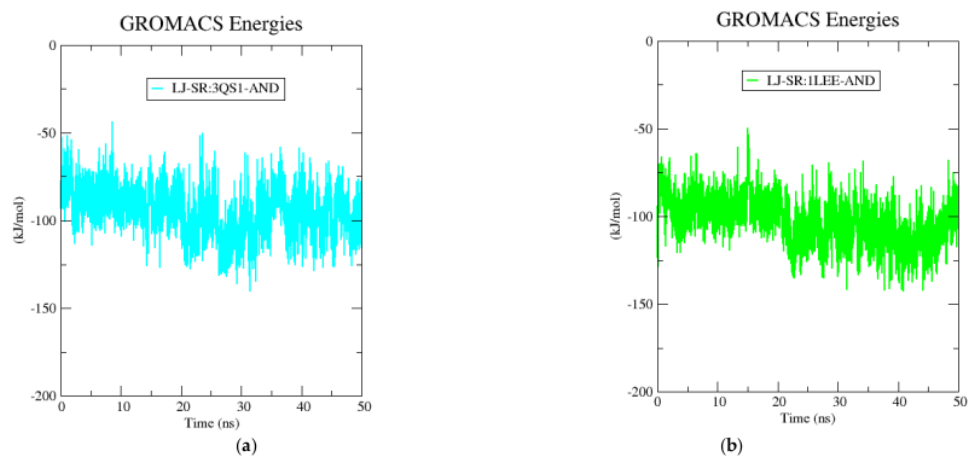


Figure 9. Short-range Lennard-Jones protein-ligand interaction energy between (a) 3QS1-AND, and (b) 1LEE-AND, and AND compounds for 50 ns.

3. Discussion

Malaria is a public health problem in developing countries that can cause death, especially in high-risk groups. Due to drug resistance in the treatment of the disease with numerous medications, it is vital to look for promising medicinal plants in traditional anti-malarial medicine that have been scientifically tested. Traditional Indonesian medicinal plants are a potential source of novel antimalarial substances. One of them is the fruit of the betel plant (*P. betle*). In this study, we used the fractionation of n-hexane from a methanol extract of betel fruit in an effort to identify anti-malarial drugs. GC-MS analysis yielded 20 probable compounds, which are shown in Figure 1 and detailed in Table 1. Generally, these compounds are reported as antimicrobials. Table 1 shows that the compounds with the highest number in the n-hexane fraction of betel fruit are located at peak 1 with a percent content (retention area) of 32.22%. The three compounds present at peak 1 are the same: phenol, 2-methoxy-3-(2-propenyl)-. The second-largest component is observed at peak 4, with a percentage of 18.86%. The three compounds at peak four are also the same compound: benzoic acid, 2,4-dimethyl-. All of the probable compounds detected by GC-MS were used as ligands in molecular docking.

The aim of searching for ligand-based drugs is to identify ligands that can interact effectively with the target receptors. However, this does not mean that the compound will be active if given orally. The journey to drug targets and drug interactions in the body consists of pharmacokinetic events, including ADME. Therefore, it is necessary to consider pharmacokinetics in the design of new drugs [24]. When designing an orally active drug, it should meet the criteria of Lipinski's Ro5 [25,26]. This rule is used to establish whether particular chemical compounds possess the requisite chemical and physical qualities for usage as active pharmaceutical ingredients that may be administered orally to humans and to evaluate drug similarities [25]. Lipinski's Ro5 analysis demonstrates that the five probable compounds with the highest BFE have excellent bioavailability due to their compliance with the rules. As a result, these compounds are predicted to be active when administered orally. This means that the compound easily binds to the receptor and that the ligand can cross the cell membrane easily [27].

In modern drug discovery, one of the most important components is the toxicity prediction of potential drug candidates. This includes hepatotoxicity, carcinogenicity, immunotoxicity, mutagenicity, and cytotoxicity, which are the most important factors to consider when searching for new drugs with potentially beneficial properties. Acute toxicity of a compound is expressed as a median lethal dose (LD₅₀) [28]. The LD₅₀ of the compounds studied ranged from 2000 (class 4 toxicity) to 5000 (class 5 toxicity) mg/kg. In general, the lower the LD₅₀, the more toxic the substance [29]. Only a few compounds under study, including artemisinin, have the potential to be immunotoxic. Immunotoxicity is described as the immune system's maladaptive functioning after exposure to a xenobiotic chemical. These events include immune system dysfunction and hyperactivity, resulting in cellular damage and permanent or reversible changes in the immune response [30].

The compounds that passed the pharmacokinetic and toxicity screening were further analyzed for their binding affinity for plasmepsins. The enzymes are aspartic proteases that work in coordination with cysteine proteases to degrade hemoglobin in the parasite's food vacuole [31]. These enzymes have been identified as possible targets for the development of new antimalarial drugs [9]. This study suggests that AND has a favorable interaction with plasmepsin 1 and 2, based on their BFE values being greater than those of artemisinin. Artemisinin, as a positive control in this study, inhibits plasmepsins and represents an antimalarial agent [11].

The receptors 3QS1 and 1LEE have the native ligands KNI and R36, respectively. The native ligands were extracted and redocked into their original binding pockets. The RMSD analysis is one of the most widely used parameters for calculating protein atomic deviations [32]. The RMSD values resulting from these superimposing native ligands after redocking to their original binding pockets were 1.7099 Å and 1.2918 Å. These values are <2.0000 Å, a value typically used in evaluating the success of docking algorithms. This

indicates that the docking method was valid [13]. The binding positions of AND and artemisinin on plasmepsins were in the same pocket, suggesting that AND provides new hope as an antimalarial lead candidate. As a result, further visualization and molecular dynamic simulation were performed.

The three parameters that are usually considered when calculating molecular docking results are binding affinity, the interaction of the amino acid residuals involved, and the hydrogen bond energy [33]. Several amino acid residues are involved in the binding of the compounds to plasmepsins, and the presence of hydrogen bonds is involved so that these three parameters stabilize AND bonds at plasmepsins, indicating that this compound inhibits the activity of these enzymes. The interactions that occur between artemisinin as a ligand and amino acid residues of the receptors demonstrate that artemisinin a positive control ligand interacts with 10 amino acid residues of the receptor 3QS1 and 14 amino acid residues of the receptor 1LEE. According to the type of AND interaction with 3QS1 and 1LEE, the interactions involve 11 amino acid residues in 3QS1 and 15 amino acid residues in 1LEE, implying that the interactions involve more amino acids than artemisinin. The accuracy of ligand binding to the receptor can be seen from the amino acid residues that interact with ligand and receptor binding [34].

Molecular dynamics simulation studies in drug active ingredient designs are frequently used in predictive studies of potential ligand–receptor interactions [35]. In an in silico physiological environment, simulations are accepted as a rational approach for evaluating the molecular dynamics and interactions between the ligand and the protein [36]. From this point of view, the change in AND over time was investigated and analyzed by the molecular docking of plasmepsins. A molecular dynamics simulation of 50 ns duration was performed using CHARMM force fields, and RMSD, RMSE, Rg, and SASA trajectory analysis were measured for both target proteins.

Measuring the binding energy between protein and ligand against time is one of the important approaches in molecular dynamics simulations where protein–ligand interactions are investigated [37]. Lennard-Jones energy measurements are one of the most widely used molecular dynamics simulations to measure the potential energy of two molecules that interact but do not bond with each other [38]. Hence, the short-range Lennard-Jones protein–ligand interaction energy was calculated. To investigate the effect of AND on two target proteins, the ligand-free apo form was simulated in the same environment and conditions. When the data obtained from molecular dynamics simulations, RMSD, RMSE, Rg, SASA, and the average short-range Lennard-Jones energy were evaluated, the stability of the complex in which AND forms plasmepsin 1 and plasmepsin 2 proteins was evaluated. The ligand gave very small deviations in the complex of AND formed by plasmepsin 1 and plasmepsin 2. It is also understood that the protein–ligand Lennard-Jones energy is a constant interaction throughout the simulation.

The results of a pharmacoinformatics study of potential compounds of betel fruit indicate that these compounds have significant implications in the search for antimalarial drugs. As public trust in the applicability and reliability of in silico approaches grows, so will their use in regulatory decision-making [39].

4. Materials and Methods

4.1. Plant Collection

Ripe betel fruits were collected from Kotamobagu City, North Sulawesi, Indonesia. The fruits were washed under running water and dried in a drying cabinet at 45 °C for 24 h. The dried fruits were ground into powder using a mixer grinder, passed through a 40-mesh Sieve to achieve a very fine powder, and stored in an airtight container until used.

4.2. Sample Preparation

Ten grams of dried betel fruit powder were macerated in 100 mL of 95% ethanol for three days with occasional shaking and filtered using Whatman No. 1 filter paper. Then, the supernatant was evaporated using a rotary vacuum evaporator to obtain a

concentrated extract. The extract was subsequently fractionated into ethyl acetate and n-hexane. The obtained n-hexane solution was centrifuged, and the supernatant was used in further analysis.

4.3. Gas Chromatography-Mass Spectrometer (GC-MS) Analysis

Compound analysis was performed using GC-MS (Shimadzu QP 2010 SE). This GC-MS uses an electron ionizing system (EI) with helium as the carrier gas at a constant flow rate of 1 mL/minute for a total time of 47.0 min at a temperature of 280 °C. The column was B-1 (100% dimethylpolysiloxane) with a length of 30 m and a diameter of 0.25 mm. The temperature of the column was set at 40–270 °C, with a temperature increase of 10 °C every 5 min.

4.4. In Silico ADMET Analysis

The studied compounds underwent pharmacokinetic and drug-like as well as toxicity analysis. The pharmacokinetic properties and drug-like nature were predicted by the Supercomputing Facility for Bioinformatics and Computational Biology (SCFBIO) (<http://www.scfbio-iitd.res.in/software/drugdesign/lipin.jsp>; accessed on 23 July 2021) [40]. The toxicity prediction was carried out on ProTox-II (<https://tox-new.charite.de/prottox-II/>; accessed on 23 July 2021) [41].

4.5. Computational Molecular Docking Analysis

4.5.1. Preparation of the Receptors

The receptor preparation procedure followed the steps of Tallei et al. [42]. The plasmepsin-1 (PDB ID: 3QS1) and plasmepsin-2 (PDB ID: 1LEE) macromolecules, which serve as receptors for targets in molecular docking, were downloaded from the Protein Data Bank (<http://www.rcsb.org/pdb/>; accessed on 29 July 2021). These receptors were opened using BIOVIA Discovery Studio Visualizer 2020 and separated from solvents and nonstandard ligands or residues. The cleaned receptors were stored in pdb format and used for docking process, and then optimized using Autodock Tools [43]. Optimization included adding hydrogen atoms and setting the grid box parameter. These results were saved in pdbqt format.

4.5.2. Preparation of the Ligands

The ligands used were bioactive compounds isolated from betel leaves that were produced by the GC-MS analysis and the artesinin drug as a control. The structures of these ligands were downloaded from <http://pubchem.ncbi.nlm.nih.gov> (accessed on 29 July 2021) in the sdf format. The procedure for ligand preparation followed the steps by Tumilaar [44]. The file format of these ligands was converted to pdb using Open Babel [45] and optimized using Autodock Tools [43]. The optimization includes setting the number of active torsions. The optimization results were saved in pdbqt format.

4.5.3. Molecular Docking

Molecular docking steps followed the procedure of Sailah et al. [46]. Ligands and receptors in the pdbqt format were copied into the vina folder. The Vina configuration file was typed in notepad and saved as 'conf.txt'. Vina was run via the command prompt. The docking calculation results were viewed in the output in notepad format. Determination of the ligand conformation resulting from docking was performed by selecting the ligand conformation that had the lowest binding free energy (best pose). The binding free energy value was displayed in the log.txt file. The position and orientation of the ligands on the receptor macromolecules and the amino acids bound to the ligands were visualized using BIOVIA Discovery Studio Visualizer 2020 software. Receptor and ligand files in pdbqt format were displayed in the application, and then the ligand–receptor interactions were displayed in 2D and 3D conformations.

4.6. Molecular Dynamics Simulation

Molecular dynamics simulations to investigate protein–ligand stability and interaction energy were performed using the GROningen MACHine for Chemical Simulations (GROMACS) [47] according to the protocol of Celik et al. [48]. The androstan-17-one, 3-ethyl-3-hydroxy-, (5 alpha)-ligand topology file was created with the CGenFF server (<https://cgenff.umaryland.edu/>; accessed on 14 August 2021) and the topology file of plasmepsin 1 and 2 protein structures with the pdb2 gmx script using the Charmm36-Jul2020 force field [49]. System energy was minimized, and canonical ensembles (amount of substance (N), pressure (P), and temperature (T)-NVT) and isothermal-isobaric ensembles (amount of substance (N), volume (V), and equilibrium step temperature (T)-NPT) were performed at 0.1 ns and 1 ns, respectively. Molecular dynamics simulations of a standard 50 ns duration were performed. The RMSD, RMSF Rg, and SASA analyses were performed. Finally, the average interaction energy between the protein and ligand was calculated according to the short-range Lennard-Jones energy. All trajectory analysis graphics were created using QtGrace tools.

5. Conclusions

This in silico study evaluated the inhibition activity of betel fruit compounds against plasmepsin 2 which are aspartic proteases found in the malaria parasite *P. falciparum*. The compound androstan-17-one, ethyl-3-hydroxy-, (5 alpha) (referred to as AND) exhibited the highest binding affinity against plasmepsins. Additionally, the compound exhibited hydrogen bond, hydrophobic, and electrostatic interactions with the receptors, indicating that these compounds interact strongly with plasmepsins. Furthermore, the AND binding site on the receptor was right at the active site of plasmepsins, indicating that this compound could inhibit plasmepsin activity. Dynamics simulations study validated the stability of the bond between AND and plasmepsins. However, the present work is only an initial screening to facilitate further research on the potential of AND as a lead compound. Furthermore, beyond a pharmacoinformatics approach, in vivo proof-of-concept testing is required to ensure that the proposed compound is truly effective against malarial proteases while not targeting human proteases.

Author Contributions: Conceptualization, F. and T.E.T.; methodology, F., T.E.T. and B.J.K.; software, F., W.B., S.G.T. and I.C.; validation, T.E.T. and T.B.E.; formal analysis, T.E.T. and T.B.E.; investigation, F., T.E.T. and B.J.K.; resources, T.E.T. and T.B.E.; data curation, F., T.E.T., B.J.K., W.B., S.G.T. and I.C.; writing—original draft preparation, F. and T.E.T.; writing—review and editing, T.E.T. and T.B.E.; visualization, T.E.T., M.A., A.M.E.-S., M.-H., A.A.-R.M. and T.; supervision, T.E.T. and T.B.E.; project administration, T.E.T., M.A., A.M.E.-S., G.M.-H., A.A.-R.M. and T.B.E.; funding acquisition, F., T.E.T., M.A., A.M.E.-S. and T.B.E. All authors have read and agreed to the published version of the manuscript.

Funding: The current work was funded by Taif University Researchers Supporting Project number (TURSP-2020/310), Taif University, Taif, Saudi Arabia.

Institutional Review Board Statement: Not applicable.

Informed Consent Statement: Not applicable.

Data Availability Statement: Data are presented in the manuscript.

Acknowledgments: The authors would like to acknowledge the Ministry of Education, Culture, Research, and Technology, Republic of Indonesia, for providing a research grant under the PTUPT scheme with Contract Number 297/E4.1/AK.04.PT/2021 and Letter of Assignment Number 1945/UN12.13/LT/2021. The molecular dynamics simulations were performed utilizing TÜBİTAK (The Scientific and Technological Research Council of Turkey) at ULAKBİM (Turkish Academic Network and Information Centre) and the High Performance and Grid Computing Centre (TRUBA resources).

Conflicts of Interest: The authors declare no conflict of interest.

References

1. Nugroho, Y. Aktivitas antimalaria (in vivo) kombinasi buah sirih (*Piper betle* L.), daun miyana (*Plectranthus scutellarioides* (L.) R. Br.), madu dan kuning telur pada mencit yang diinfeksi *Plasmodium berghei*. *Bul. Penelit. Kesehat.* **2011**, *39*, 129–137.
2. Antinori, S.; Galimberti, L.; Milazzo, L.; Corbellino, M. Biology of human malaria plasmodia including *Plasmodium knowlesi*. *Mediterr. J. Hematol. Infect. Dis.* **2012**, *4*, e2012013. [[CrossRef](#)]
3. Harijanto, P.N.; Nugroho, A.; Gunawan, C.A. *Malaria dari Molekuler ke Klinik*; Penerbit Buku Kedokteran EGC: Jakarta, Indonesia, 2009.
4. Antony, H.A.; Parija, S.C. Antimalarial drug resistance: An overview. *Trop. Parasitol.* **2016**, *6*, 30–41. [[CrossRef](#)]
5. Conrad, M.D.; Rosenthal, P.J. Antimalarial drug resistance in Africa: The calm before the storm? *Lancet. Infect. Dis.* **2019**, *19*, e338–e351. [[CrossRef](#)]
6. Pribadi, W.; Muljono, R. Resistensi parasit malaria terhadap obat malaria. In *Parasitologi Kedokteran*; Gandahusada, S., Ilahude, H., Pribadi, W., Eds.; Gaya Baru: Jakarta, Indonesia, 2004; pp. 197–198.
7. Gulati, M.; Narula, A.; Vishnu, R.; Katyal, G.; Negi, A.; Ajaz, I.; Narula, K.; Chauhan, G.; Kant, R.; Lumb, V.; et al. Plasmepsin II as a Potential Drug Target for Resistant Malaria. *DU J. Undergrad. Res. Innov.* **2015**, *1*, 85–95.
8. Soh, B.Y.; Song, H.O.; Lee, Y.; Lee, J.; Kaewintajak, K.; Lee, B.; Choi, Y.Y.; Cho, J.H.; Choi, S.; Park, H. Identification of active *Plasmodium falciparum* calpain to establish screening system for Pf-calpain-based drug development. *Malar. J.* **2013**, *12*, 47. [[CrossRef](#)] [[PubMed](#)]
9. Cheuka, P.M.; Dziwornu, G.; Okombo, J.; Chibale, K. Plasmepsin inhibitors in antimalarial drug discovery: Medicinal chemistry and target validation (2000 to present). *J. Med. Chem.* **2020**, *63*, 4445–4467. [[CrossRef](#)]
10. Favuzza, P.; de Lera Ruiz, M.; Thompson, J.K.; Triglia, T.; Ngo, A.; Steel, R.W.J.; Vavrek, M.; Christensen, J.; Healer, J.; Boyce, C.; et al. Dual Plasmepsin-Targeting Antimalarial Agents Disrupt Multiple Stages of the Malaria Parasite Life Cycle. *Cell Host Microbe* **2020**, *27*, 642–658.e12. [[CrossRef](#)] [[PubMed](#)]
11. Yuan, L.; Ziegler, R.; Hamann, A. Inhibition of phosphoenolpyruvate carboxykinase gene expression by metformin in cultured hepatocytes. *Chin. Med. J.* **2002**, *115*, 1843–1848.
12. Ismail, H.M.; Barton, V.; Phanchana, M.; Charoensutthivarakul, S.; Wong, M.H.L.; Hemingway, J.; Biagini, G.A.; O'Neill, P.M.; Ward, S.A. Artemisinin activity-based probes identify multiple molecular targets within the asexual stage of the malaria parasites *Plasmodium falciparum* 3D7. *Proc. Natl. Acad. Sci. USA* **2016**, *113*, 2080–2085. [[CrossRef](#)]
13. Nerdy. In silico docking roselle (*Hibiscus sabdariffa* L.) calyces flavonoids as antimalarial against plasmepsin 1 and plasmepsin 2. *Asian J. Pharm. Clin. Res.* **2017**, *10*, 183–186. [[CrossRef](#)]
14. Rakib, A.; Nain, Z.; Islam, M.A.; Sami, S.A.; Mahmud, S.; Islam, A.; Ahmed, S.; Siddiqui, A.B.F.; Babu, S.M.O.F.; Hossain, P.; et al. A molecular modelling approach for identifying antiviral selenium-containing heterocyclic compounds that inhibit the main protease of SARS-CoV-2: An in silico investigation. *Brief. Bioinform.* **2021**, *22*, 1476–1498. [[CrossRef](#)] [[PubMed](#)]
15. Venkateswarlu, K.; Devanna, N. Pharmacological evaluations (analgesic activity) of 'Piper Betel'. *Int. J. Pharmamedix India* **2014**, *2*, 688–693.
16. Rekha, V.P.B.; Kollipara, M.; Srinivasa Gupta, B.R.S.S.; Bharath, Y.; Pulicherla, K.K. A Review on *Piper betle* L.: Nature's promising medicinal reservoir. *Am. J. Ethnomed.* **2014**, *1*, 276–289.
17. Chakraborty, D.; Shah, B. Antimicrobial, anti-oxidative and anti-hemolytic activity of *Piper betel* leaf extracts. *Int. J. Pharm. Pharm. Sci.* **2011**, *3*, 192–199.
18. Makatamba, V.; Fatimawali; Rundengan, G. Analisis senyawa tannin dan aktifitas antibakteri fraksi buah sirih (*Piper betle* L.) terhadap *Streptococcus mutans*. *J. MIPA* **2020**, *9*, 75–80. [[CrossRef](#)]
19. Pratiwi, N.P.R.K.; Muderawan, I.W. Analisis kandungan kimia ekstrak daun sirih hijau (*Piper betle*) dengan GC-MS. *EJournal Univ. Pendiik. Ganesha* **2016**, 304–310.
20. Tjandra, R.; Fatimawali; Datu, O. Analisis senyawa alkaloid dan uji daya hambat ekstrak buah sirih (*Piper betle* L.) terhadap bakteri *Staphylococcus epidermidis*. *eBiomedik* **2020**, *8*, 165–171. [[CrossRef](#)]
21. Parwata, I.O.A.; Santi, S.R.; Sulaksana, I.; Alit Widiarthini, I. Aktivitas larvasida minyak atsiri pada daun sirih (*Piper betle* linn) terhadap larva nyamuk *Aedes aegypti*. *J. Kim.* **2012**, *5*, 88–93.
22. Nagori, K.; Singh, M.K.; Alexander, A.; Kumar, T.; Dewangan, D.; Badwaik, H.; Tripathi, D.K. *Piper betle* L.: A review on its ethnobotany, phytochemistry, pharmacological profile and profiling by new hyphenated technique DART-MS (Direct Analysis in Real Time Mass Spectrometry). *J. Pharm. Res.* **2011**, *4*, 2991–2997.
23. Mohottalage, S.; Tabacchi, R.; Guerin, P.M. Components from Sri Lankan *Piper betle* L. leaf oil and their analogues showing toxicity against the housefly, *Musca domestica*. *Flavour Fragr. J.* **2007**, *22*, 130–138. [[CrossRef](#)]
24. Walker, D.K. The use of pharmacokinetic and pharmacodynamic data in the assessment of drug safety in early drug development. *Br. J. Clin. Pharmacol.* **2004**, *58*, 601–608. [[CrossRef](#)] [[PubMed](#)]
25. Lipinski, C.A. Lead- and drug-like compounds: The rule-of-five revolution. *Drug Discov. Today Technol.* **2004**, *1*, 337–341. [[CrossRef](#)]
26. Mahmud, S.; Mita, M.A.; Biswas, S.; Paul, G.K.; Promi, M.M.; Afrose, S.; Hasan, R.; Shimu, S.S.; Zaman, S.; Uddin, S.; et al. Molecular docking and dynamics study to explore phytochemical ligand molecules against the main protease of SARS-CoV-2 from extensive phytochemical datasets. *Expert Rev. Clin. Pharmacol.* **2021**, *14*, 1305–1315. [[CrossRef](#)]
27. Singh, S.; Gupta, A.K.; Verma, A. Molecular Properties and Bioactivity Score of The *Aloe vera* Antioxidant Compounds—In Order to Lead Fnding. *Res. J. Pharm. Biol. Chem. Sci.* **2013**, *4*, 876–881.

28. Lei, T.; Li, Y.; Song, Y.; Li, D.; Sun, H.; Hou, T. ADMET evaluation in drug discovery: 15. Accurate prediction of rat oral acute toxicity using relevance vector machine and consensus modeling. *J. Cheminform.* **2016**, *8*, 6. [[CrossRef](#)] [[PubMed](#)]
29. Ruiz, P.; Begliutti, G.; Tincher, T.; Wheeler, J.; Mumtaz, M. Prediction of Acute Mammalian Toxicity Using QSAR Methods: A Case Study of Sulfur Mustard and Its Breakdown Products. *Molecules* **2012**, *17*, 8982–9001. [[CrossRef](#)]
30. Anderson, S.E.; Shane, H.L. Investigative immunotoxicology. *Methods Mol. Biol.* **2018**, *1803*, 27–46. [[CrossRef](#)] [[PubMed](#)]
31. Moura, P.A.; Dame, J.B.; Fidock, D.A. Role of *Plasmodium falciparum* digestive vacuole plasmepsins in the specificity and antimalarial mode of action of cysteine and aspartic protease inhibitors. *Antimicrob. Agents Chemother.* **2009**, *53*, 4968–4978. [[CrossRef](#)]
32. Sargsyan, K.; Grauffel, C.; Lim, C. How molecular size impacts RMSD applications in molecular dynamics simulations. *J. Chem. Theory Comput.* **2017**, *13*, 1518–1524. [[CrossRef](#)]
33. Ladokun, O.A.; Abiola, A.; Okikiola, D.; Ayodeji, F. GC-MS and Molecular Docking Studies of *Hunteria umbellata* Methanolic Extract as a Potent Anti-Diabetic. *Inform. Med. Unlocked* **2018**, *13*, 1–8. [[CrossRef](#)]
34. Rakib, A.; Paul, A.; Chy, M.N.U.; Sami, S.A.; Baral, S.K.; Majumder, M.; Tareq, A.M.; Amin, M.N.; Shahriar, A.; Zia Uddin, M.; et al. Biochemical and computational approach of selected phytochemicals from *Tinospora crispa* in the management of COVID-19. *Molecules* **2020**, *25*, 3936. [[CrossRef](#)]
35. Salmaso, V.; Moro, S. Bridging molecular docking to molecular dynamics in exploring ligand-protein recognition process: An overview. *Front. Pharmacol.* **2018**, *9*, 923. [[CrossRef](#)]
36. Binder, K.; Horbach, J.; Kob, W.; Wolfgang, P.; Fathollah, V. Molecular dynamics simulations. *J. Phys. Condens. Matter* **2004**, *16*, S429–S453. [[CrossRef](#)]
37. Jha, P.K.; Sknepnek, R.; Guerrero-García, G.L.; De La Cruz, M.O. A graphics processing unit implementation of coulomb interaction in molecular dynamics. *J. Chem. Theory Comput.* **2010**, *6*, 3058–3065. [[CrossRef](#)]
38. Semiromi, D.T.; Azimian, A.R. Molecular dynamics simulation of nondroplets with the modified Lennard-Jones potential function. *Heat Mass Transf. Stoffuebertragung* **2010**, *47*, 579–588. [[CrossRef](#)]
39. Gellatly, N.; Sewell, F. Regulatory acceptance of in silico approaches for the safety assessment of cosmetic-related substances. *Comput. Toxicol.* **2019**, *11*, 82–89. [[CrossRef](#)]
40. Soni, A.; Pandey, K.; Ray, P.; Jayaram, B. Genomes to hits in silico—A country path today, a highway tomorrow: A case study of Chikungunya. *Curr. Pharm. Des.* **2013**, *19*, 4687–4700. [[CrossRef](#)] [[PubMed](#)]
41. Banerjee, P.; Eckert, A.O.; Schrey, A.K.; Preissner, R. ProTox-II: A webserver for the prediction of toxicity of chemicals. *Nucleic Acids Res.* **2018**, *46*, W257–W263. [[CrossRef](#)] [[PubMed](#)]
42. Tallei, T.E.; Tumilaar, S.G.; Niode, N.J.; Fatimawali; Kepel, B.J.; Idroes, R.; Effendi, Y.; Sakib, S.A.; Emran, T.B. Potential of plant bioactive compounds as SARS-CoV-2 main protease (M^{Pro}) and spike (S) glycoprotein inhibitors: A molecular docking study. *Scientifica* **2020**, *2020*, 6307457. [[CrossRef](#)]
43. Morris, G.; Huey, R.; Lindstrom, W.; Sanner, M.F.; Belew, R.K.; Goodsell, D.S.; Olson, A.J. AutoDock4 and AutoDockTools4: Automated docking with selective receptor flexibility. *J. Comput. Chem.* **2009**, *30*, 2785–2791. [[CrossRef](#)]
44. Tumilaar, S.G.; Fatimawali, F.; Jane, N.N.; Yunus, E.; Rinaldi, I.; Akroman, A.A.; Ahmed, R.; Bin, E.T.; Ekawati, T.T. The potential of leaf extract of *Pangium edule* Reinw as HIV-1 protease inhibitor: A computational biology approach. *J. Appl. Pharm. Sci.* **2020**, *11*, 101–110. [[CrossRef](#)]
45. O’Boyle, N.M.; Banck, M.; James, C.A.; Morley, C.; Vandermeersch, T.; Hutchison, G.R. Open Babel: An open chemical toolbox. *J. Cheminform.* **2011**, *3*, 33. [[CrossRef](#)] [[PubMed](#)]
46. Sailah, I.; Tumilaar, S.G.; Lombogia, L.T.; Celik, I.; Tallei, T.E. Molecular docking and dynamics simulations study of selected phytoconstituents of “Pangi” (*Pangium edule* Reinw) leaf as anti-SARS-CoV-2. *Philipp. J.* **2021**, *150*, 925–937.
47. Abraham, M.J.; Murtola, T.; Schulz, R.; Páll, S.; Smith, J.C.; Hess, B.; Lindahl, E. GROMACS: High performance molecular simulations through multi-level parallelism from laptops to supercomputers. *SoftwareX* **2015**, *1*, 19–25. [[CrossRef](#)]
48. Celik, I.; Yadav, R.; Duzgun, Z.; Albogami, S.; El-Shehawi, A.M.; Fatimawali; Idroes, R.; Tallei, T.E.; Emran, T.B. Interactions of the receptor binding domain of SARS-CoV-2 variants with hACE2: Insights from molecular docking analysis and molecular dynamic simulation. *Biology* **2021**, *10*, 880. [[CrossRef](#)] [[PubMed](#)]
49. Huang, J.; Mackerell, A.D. CHARMM36 all-atom additive protein force field: Validation based on comparison to NMR data. *J. Comput. Chem.* **2013**, *34*, 2135–2145. [[CrossRef](#)] [[PubMed](#)]

Appraisal of Bioactive Compounds of Betel Fruit as Antimalarial Agents by Targeting Plasmeysin 1 and 2: A Computational Approach

ORIGINALITY REPORT

18%

SIMILARITY INDEX

15%

INTERNET SOURCES

16%

PUBLICATIONS

6%

STUDENT PAPERS

PRIMARY SOURCES

1	eprints.ucm.es Internet Source	1%
2	Nutrition & Food Science, Volume 43, Issue 2 (2013-05-27) Publication	1%
3	malariajournal.biomedcentral.com Internet Source	1%
4	Amin Tahoun, Helmy K. Elnafarawy, Hanem El-Sharkawy, Amira M. Rizk et al. "The Prevalence and Molecular Biology of Staphylococcus aureus Isolated from Healthy and Diseased Equine Eyes in Egypt", Antibiotics, 2022 Publication	1%
5	Submitted to Universitas Sam Ratulangi Student Paper	1%
6	ouci.dntb.gov.ua Internet Source	1%

7	pubmed.ncbi.nlm.nih.gov Internet Source	1 %
8	online-journal.unja.ac.id Internet Source	<1 %
9	iojs.unida.ac.id Internet Source	<1 %
10	sparrow.up.poznan.pl Internet Source	<1 %
11	www.researchsquare.com Internet Source	<1 %
12	pure.pucv.cl Internet Source	<1 %
13	Abdul Hawil Abas, Siti Marfuah, Rinaldi Idroes, Diah Kusumawaty et al. "Can the SARS-CoV-2 Omicron Variant Confer Natural Immunity against COVID-19?", <i>Molecules</i> , 2022 Publication	<1 %
14	www.gssrr.org Internet Source	<1 %
15	Peter Mubanga Cheuka, Godwin Dziwornu, John Okombo, Kelly Chibale. "Plasmepsin Inhibitors in Antimalarial Drug Discovery: Medicinal Chemistry and Target Validation (2000 to Present)", <i>Journal of Medicinal Chemistry</i> , 2020 Publication	<1 %

16

www.frontiersin.org

Internet Source

<1 %

17

Antonio Sorlozano-Puerto, Maria Albertuz-Crespo, Isaac Lopez-Machado, Lidia Gil-Martinez et al. "Antibacterial and Antifungal Activity of Propyl-Propane-Thiosulfinatate and Propyl-Propane-Thiosulfonate, Two Organosulfur Compounds from *Allium cepa*: In Vitro Antimicrobial Effect via the Gas Phase", *Pharmaceuticals*, 2020

Publication

<1 %

18

Chandran S. Abhinand, Junaida Ibrahim, Thottethodi Subrahmanya Keshava Prasad, Rajesh Raju et al. "Molecular docking and dynamics studies for the identification of Nipah virus glycoprotein inhibitors from Indian medicinal plants", *Journal of Biomolecular Structure and Dynamics*, 2022

Publication

<1 %

19

Ellen Hotmian, Nurul Qalbiyyah Ma'ruf, Adinda Dwi Tania, Elly Juliana Suoth, Fatimawali, Trina Ekawati Tallei. "Evaluating the immunomodulatory properties of *Cyperus rotundus* tuber's bioactive compounds using a molecular docking approach", *AIP Publishing*, 2022

Publication

<1 %

www.investigo.biblioteca.uvigo.es

20

Internet Source

<1 %

21

coek.info

Internet Source

<1 %

22

academic.oup.com

Internet Source

<1 %

23

G M Idroes, T E Tallei, R Idroes, Muslem, M Riza, Suhendrayatna. "The study of Calotropis Gigantea leaf metabolites from le Brouk geothermal area Lamteuba-Aceh Besar using molecular docking", IOP Conference Series: Earth and Environmental Science, 2021

Publication

<1 %

24

Submitted to SASTRA University

Student Paper

<1 %

25

Tajbiha E. Mowla, Sumyya Zahan, Saad Ahmed Sami, S.M. Naim Uddin, Minhajur Rahman. "Potential effects and relevant lead compounds of Vigna mungo (L.) Hepper seeds against bacterial infection, helminthiasis, thrombosis and neuropharmacological disorders", Saudi Journal of Biological Sciences, 2022

Publication

<1 %

26

ejournal.unsrat.ac.id

Internet Source

<1 %

27

Nurul Qalbiyyah Ma'ruf, Ellen Hotmian, Adinda Dwi Tania, Irma Antasionasti, Fatimawali, Trina Ekawati Tallei. "In silico analysis of the interactions of Clitoria ternatea (L.) bioactive compounds against multiple immunomodulatory receptors", AIP Publishing, 2022

Publication

<1 %

28

cmuj.cmu.ac.th

Internet Source

<1 %

29

ugspace.ug.edu.gh

Internet Source

<1 %

30

www.preprints.org

Internet Source

<1 %

31

avesis.erciyes.edu.tr

Internet Source

<1 %

32

Lamya H. Al-Wahaibi, Y.Sheena Mary, Y.Shyma Mary, Aamal A. Al-Mutairi, Hanan M. Hassan, Ali A. El-Emam, Rohitash Yadav. "Investigation of the electronic properties of solvents (water, benzene, methanol) using IEFPCM model, spectroscopic investigation with docking and MD simulations of a thiadiazole derivative with anti-tumor activities", Journal of Molecular Liquids, 2021

Publication

<1 %

33

Mithun Rudrapal, Ismail Celik, Johra Khan, Mohammed Azam Ansari et al. "Identification of bioactive molecules from Triphala (Ayurvedic herbal formulation) as potential inhibitors of SARS-CoV-2 main protease (Mpro) through computational investigations", Journal of King Saud University - Science, 2022

Publication

<1 %

34

covid19-data.nist.gov

Internet Source

<1 %

35

Andrea Gelemanović, Tinka Vidović, Višnja Stepanić, Katarina Trajković. "Identification of 37 Heterogeneous Drug Candidates for Treatment of COVID-19 via a Rational Transcriptomics-Based Drug Repurposing Approach", Pharmaceuticals, 2021

Publication

<1 %

36

Mezencev, R.. "Trypanosoma cruzi: Antiproliferative effect of indole phytoalexins on intracellular amastigotes in vitro", Experimental Parasitology, 200905

Publication

<1 %

37

Prasenjit Bhaumik, Alla Gustchina, Alexander Wlodawer. "Structural studies of vacuolar plasmepsins", Biochimica et Biophysica Acta (BBA) - Proteins and Proteomics, 2012

Publication

<1 %

38

Submitted to Universiti Teknologi MARA

Student Paper

<1 %

39

upcommons.upc.edu

Internet Source

<1 %

40

encyclopedia.pub

Internet Source

<1 %

41

Harsh Kumar, Navidha Aggarwal, Minakshi Gupta Marwaha, Aakash Deep et al.

"Thiazolidin-2,4-Dione Scaffold: An Insight into Recent Advances as Antimicrobial, Antioxidant, and Hypoglycemic Agents", *Molecules*, 2022

Publication

<1 %

42

environmentalchemistry.com

Internet Source

<1 %

43

Akshay Singh, Ajay Kumar Sharma, Nagendra Kumar Singh, Humira Sonah, Rupesh Deshmukh, Tilak Raj Sharma. "Understanding the Effect of Structural Diversity in WRKY Transcription Factors on DNA Binding Efficiency through Molecular Dynamics Simulation", *Biology*, 2019

Publication

<1 %

44

Geraldene Munsamy, Mahmoud E. S. Soliman. "Unveiling a New Era in Malaria Therapeutics: A Tailored Molecular Approach

<1 %

Towards the Design of Plasmepsin IX Inhibitors", The Protein Journal, 2019

Publication

45

Rasha Saad Suliman, Sahar Saleh Alghamdi, Rizwan Ali, Ishrat Rahman et al. "Distinct Mechanisms of Cytotoxicity in Novel Nitrogenous Heterocycles: Future Directions for a New Anti-Cancer Agent", Molecules, 2022

Publication

<1 %

46

Shirmin Islam, Md. Liton Mahmud, Waleed H. Almalki, Suvro Biswas et al. "Cell-Free Supernatants (CFSs) from the Culture of Bacillus subtilis Inhibit Pseudomonas sp. Biofilm Formation", Microorganisms, 2022

Publication

<1 %

47

Zheng, Tong, Li, Tao, Song, Zhang. "Design and Evaluation of an Acoustic Modem for a Small Autonomous Unmanned Vehicle", Sensors, 2019

Publication

<1 %

48

ddtjournal.com

Internet Source

<1 %

49

link.springer.com

Internet Source

<1 %

50

"Fundamental Concepts", Walter de Gruyter GmbH, 2020

Publication

<1 %

51	edoc.hu-berlin.de Internet Source	<1 %
52	researchspace.ukzn.ac.za Internet Source	<1 %
53	www.colibri.udelar.edu.uy Internet Source	<1 %
54	www.mdpi.com Internet Source	<1 %
55	Jairo Mercado-Camargo, Leonor Cervantes-Ceballos, Ricardo Vivas-Reyes, Esther Olmo-Fernández, Harold Gómez-Estrada. "MOLECULAR DYNAMICS SIMULATION OF FOUR BIFLAVONOIDS WITH THE LEISHMANOLYSIN (gp63) PROTEIN OF Leishmania major", Research Square Platform LLC, 2022 Publication	<1 %
56	Mujeeb A. Sultan, Mansour S. A. Galil, Mohyeddine Al-Qubati, Mufeed M. Omar, Assem Barakat. "Synthesis, Molecular Docking, Druglikeness Analysis, and ADMET Prediction of the Chlorinated Ethanoanthracene Derivatives as Possible Antidepressant Agents", Applied Sciences, 2020 Publication	<1 %

57	Ulviye Acar Çevik, Ismail Celik, Jaime Mella, Marco Mellado, Yusuf Özkay, Zafer Asım Kaplancıklı. "Design, Synthesis, and Molecular Modeling Studies of a Novel Benzimidazole as an Aromatase Inhibitor", ACS Omega, 2022 Publication	<1 %
58	biomedpharmajournal.org Internet Source	<1 %
59	downloads.hindawi.com Internet Source	<1 %
60	journal.ugm.ac.id Internet Source	<1 %
61	mdpi-res.com Internet Source	<1 %
62	vdocuments.mx Internet Source	<1 %
63	www.hindawi.com Internet Source	<1 %
64	www.knowitall.com Internet Source	<1 %
65	www2.mdpi.com Internet Source	<1 %
66	Md R. Amin, Farhana Yasmin, Sujan Dey, Shafi Mahmud et al. "Methyl β -D-galactopyranoside esters as potential inhibitors for SARS-CoV-2	<1 %

protease enzyme: synthesis, antimicrobial, PASS, molecular docking, molecular dynamics simulations and quantum computations", *Glycoconjugate Journal*, 2022

Publication

67

Rafael de Almeida Barros, Yaremis Meriño-Cabrera, José Severiche Castro, Neilier Rodrigues da Silva Junior et al. "Bovine pancreatic trypsin inhibitor and soybean Kunitz trypsin inhibitor: Differential effects on proteases and larval development of the soybean pest *Anticarsia gemmatalis* (Lepidoptera: Noctuidae)", *Pesticide Biochemistry and Physiology*, 2022

Publication

<1 %

68

Ika Rahayu, Kris Herawan Timotius. "Phytochemical Analysis, Antimutagenic and Antiviral Activity of *Moringa oleifera* L. Leaf Infusion: In Vitro and In Silico Studies", *Molecules*, 2022

Publication

<1 %

69

Mustafa Shukry, Saqer S. Alotaibi, Sarah M. Albogami, Nora Fathallah, Foad Farrag, Mahmoud A. O. Dawood, Mahmoud S. Gewaily. "Garlic Alleviates the Injurious Impact of Cyclosporine-A in Male Rats through Modulation of Fibrogenic and Steroidogenic Genes", *Animals*, 2020

Publication

<1 %

70

www.ncbi.nlm.nih.gov

Internet Source

<1 %

71

"Advances in Computational and Bio-Engineering", Springer Science and Business Media LLC, 2020

Publication

<1 %

Exclude quotes On

Exclude matches Off

Exclude bibliography On