

https://mail.google.com/mail/u/0/#search/E.Glover%40ajhb.org/FMfcgwxKjKkDSITPhKvxdrgxLLmctIW

Gmail E.Glover@ajhb.org Active

AJHB-2020-144 - (1407) Revise and Resubmit Glover External Inbox x

American Journal of Health Behavior -ajhb@manuscriptmanager.net- Sat, 31 Oct 2020, 16:12

Manuscript: AJHB-2020-144 - (1407) - Predicting Factors on Modeling Healthy Behavior: A Systematic Review
Date submitted: 2020-09-25

Dear Dr. LEMAN

Thank you very much for submitting your manuscript to the American Journal of Health Behavior.

Your manuscript has now been evaluated by external peer-reviewers and by members of the editorial board. While we certainly find merit in your paper, reviewers brought up issues that you will need to address to strengthen your paper for re-submission and consideration for publication in the Journal.

Please address the Editorial Review/Comment and each of the reviewer critiques. Be sure to answer all questions/suggestions in a point by point format in the text field provided during online re-submission. This point by point matrix needs to show how you responded to the Editorial Review/Comment and to each of the reviewer remarks.

I look forward to receiving your revised article. We expect to receive revised manuscript within 45 days of today.

Thank you again for submitting your work to the American Journal of Health Behavior.

12:56 20/12/2022

https://mail.google.com/mail/u/0/#search/E.Glover%40ajhb.org/FMfcgwxKjKkDSITPhKvxdrgxLLmctIW

Gmail E.Glover@ajhb.org Active

Elbert D. Glover, PhD
Editor
American Journal of Health Behavior

Editorial Review and Comment

Overall, a weak manuscript with potential. Reviewer #1 is very thorough and Reviewer #2 adds some good commentary as well, with respect to identifying major weaknesses and what needs to be improved (in some examples - extensively). Both of these reviewers evaluated this manuscript as poor, as they assessed the conclusions/interpretations as being unsound, with reviewer #1 opting to recommend rejection. This manuscript is close to being a rejection, but the weaknesses might be addressed by the co-authors. It is an interesting approach to model healthy behavior, but it is not written very well. Many grammatical and wording sloppiness. It might be advisable to hire an editor to re-write it. However, substantively, the methods used to derive the literature review are not clear - how the articles were selected and aggregated for summary. Why is there no articles about social learning theory? Also, the interpretation of findings from the modeling are incomplete - much more discussion is needed. There may be something of value here - in improving the literature - but the manuscript needs a lot of work. Please systematically address the concerns of the Reviewer #1 and #2 - and thoroughly revise the manuscript.

Reviewer 1 report:
The article "Predicting Factors on Modeling Healthy Behavior: A Systematic Review" provides interesting information about modeling as a variable related to behavior change. Please see my comments below.

Overall, this study somewhat adds to the literature in terms of modeling and its effects on behavior change. However, throughout the manuscript there were many words missing in sentences, incomplete sentences, and redundancy of topics affecting the clarity of the manuscript. There is also the use of the word "one" when discussing imitating behaviors, but it was not clear whether the authors are speaking of one behavior-as a number 1) or should that word be omitted. The paragraph on page 2 under Methods illustrates my comments about missing words-for example, it appears that the word "if" should be inserted in sentence three before the first "and" before those in the next to last

12:57 20/12/2022

https://mail.google.com/mail/u/0/#search/E.Glover%40ajhb.org/FMfcgwxKjKkDSITPhKvJrdgxLLmctfW

Gmail E.Glover@ajhb.org Active

Compose

Mail: Inbox, Starred, Drafts (12), More, Labels (+)

7 of 8

also the use of the word "one" when discussing imitating behaviors, but it was not clear whether the authors are speaking of one behavior-as a number 1) or should that word should be omitted. The paragraph on page 2 under Methods illustrates my comments about missing words-for example, it appears that the word "of" should be inserted somewhere in sentence three before "the factors" and before theses in the next to last sentence. This issue is consistent throughout the manuscript.

In terms of the literature review, I was wondering why social learning theory was not used for additional keywords? Many of the articles on modeling have used this earlier term related to social cognitive theory. In terms of the selection of the articles for review, a mention of 20 articles is provided in the last sentences on page 3. However, the reader has no idea where these 20 articles came from. More discussion of Figure 1 needs to take place in terms of the final articles reviewed and those that made the final list. Also, there were no analyses done of the level of agreement among the reviewers of the articles.

As for the results of the review, the selection of the studies and their important information is critical for readers to understand the authors' interpretation of the findings. While on page 4, under Results, there is discussion of the articles in terms of some results, these finding are not clearly shown as a column in Table 3. Table 3 needs to show which articles include physical activity, nutrition, etc. It should also include factors in the article that relate to the four factors the authors have provided for modeling (attention, retention, motor reproduction, and motivation). One should not have to search this information from Table 1. In addition, it is not clear from Table 3 or Table 1 why the components discussed are there at all. This disconnect between the text and Tables made understanding the manuscript more difficult.

This review of studies using only a narrative approach makes the findings very limited. Without quantitative data (or rigorous qualitative data) to assess, interpretation of findings is only at the surface level. Therefore, this research is really a narrative review and not a systematic review per se.

In the discussion section, how the reviewed articles again fit with the four factors of modeling needs to be clearly highlighted. Also, more discussion should take place about next steps. Examples might be doing a more quantitative systematic review and from that learning how to

12:57 20/12/2022

https://mail.google.com/mail/u/0/#search/E.Glover%40ajhb.org/FMfcgwxKjKkDSITPhKvJrdgxLLmctfW

Gmail E.Glover@ajhb.org Active

Compose

Mail: Inbox, Starred, Drafts (12), More, Labels (+)

7 of 8

In the discussion section, how the reviewed articles again fit with the four factors of modeling needs to be clearly highlighted. Also, more discussion should take place about next steps. Examples might be doing a more quantitative systematic review and from that learning how to implement in practice what is learned.

Reviewer 2 report:
 This study focused on examining potential factors related to the four conditions of modeling (attention, retention, motor reproduction, motivation) in the learning of healthy behaviors. Deepening current understandings of modeling on the adoption and maintenance of healthy behaviors is an important topic and appropriate for the American Journal of Health Behavior. However, in addition to a number of word usage and grammatical issues, the specific focus of the study is unclear. The Introduction should be reorganized, revised and presented in a very clear and succinct way. I suggest beginning with a clear definition of 'health behaviors' and the challenge of adopting positive health behaviors. Then move toward the influence of modeling, explain the four conditions of modeling and then highlight the importance of understanding factors that may be associated with these four conditions. The Methods section provides details of how the articles for review were selected, however, standards for determination of 'prediction factors' are less clear. How did an item become labeled as a 'predictive factor' for each of the condition? Strengthen the Results section by providing more details and context for what was found, particularly focusing on the 'predictors' for each condition. The Discussion section is lacking in organization and needs more specific alignment with the primary focus of the manuscript. Overall, the topic and concept are intriguing. However, the manuscript is confusing and difficult to follow.

Reviewer 3 report:
 This is a very well researched, relevant, and methodologically sound study. The findings are important to the development of future health behavior interventions. There are a few grammatical errors throughout that should be addressed. While the inclusion criteria is very clear, it is unclear in the manuscript why 3275 articles were excluded from the review.

12:58 20/12/2022

Browser address bar: <https://mail.google.com/mail/u/0/#search/E.Glover%40ajhb.org/FMfcgwxKjKkDSITPhKvjdrgxLLmctIW>

Gmail interface: Search for E.Glover@ajhb.org. Active status. 7 of 8 messages.

YOUR SIGN IN INFORMATION
Website: <https://www.manuscriptmanager.net/ajhb>
Email: micpatlem1982@unsrat.ac.id

Forgot password or not signed in before?
Click the URL below to create/reset your password.
https://www.manuscriptmanager.net/sLibv4/retrieve_pw.php?paramScreen=ekroyDjLkri5yCSINEolYBj3mirQxtqag657Hd7/KY=

[Message clipped] [View entire message](#)

Michael Andreas Leman <micpatlem1982@unsrat.ac.id>
to Elbert

5 Nov 2020, 20:37

Dear Elbert D. Glover, PhD
Editor
American Journal of Health Behavior

Thank you for giving us the opportunity to submit a revised draft of our manuscript. Also, we appreciate the reviewers' and editor's time and efforts dedicated to providing feedback on our manuscript and are grateful for the insightful comments and valuable improvements to our paper. I will revise this manuscript as soon as possible. Thank you.

Sincerely yours,

Browser address bar: <https://mail.google.com/mail/u/0/#search/E.Glover%40ajhb.org/FMfcgwxKjKkDSITPhKvjdrgxLLmctIW>

Gmail interface: Search for E.Glover@ajhb.org. Active status. 7 of 8 messages.

Sincerely yours,
Michael

Elbert Glover <e.glover@ajhb.org>
to me

5 Nov 2020, 20:44

Great look forward to receiving revised manuscript.

glover

Elbert D. Glover, PhD, FASHA, FAAHB, FRIPH
Editor, American Journal of Health Behavior
PNG Publications
2205-K Oak Ridge Rd, Suite 115-AJHB
Oak Ridge NC 27310 USA
(+1) 240-638-6991
e.glover@ajhb.org
www.ajhb.org

https://mail.google.com/mail/u/0/#search/E.Glover%40ajhb.org/FMfcgwxKjnRmFWkFmrwGJCpPQDqb...

Gmail E.Glover@ajhb.org Active

Compose

Mail: Inbox, Starred, Drafts (12), More, Labels (+)

6 of 8

American Journal of Health Behavior <ajhb@manuscriptmanager.net> to me
Thu, 3 Dec 2020, 09:58

Submission: AJHB-2020-144/R1 RESUBMISSION - (1407) - Predicting Factors on Modeling Healthy Behavior: A Systematic Review

Attention: Dr. LEMAN

Automatic notification:

Thank you very much for submitting the above manuscript.

The manuscript is being evaluated and we will contact you as soon as a decision has been made.

Please inform us by return of email if the version posted on the web site does not correspond with the version that was submitted.

The progress of your manuscript can be followed from the progress report accessed from your account overview.

Yours sincerely,
The Editorial Office

12:59 20/12/2022

https://mail.google.com/mail/u/0/#search/E.Glover%40ajhb.org/FMfcgwxKjn5wKqDwdsrPRFXrHCX...

Gmail E.Glover@ajhb.org Active

Compose

Mail: Inbox, Starred, Drafts (12), More, Labels (+)

5 of 8

AJHB-2020-144/R1 RESUBMISSION - (1407) Accept with Revision1 Inbox x

American Journal of Health Behavior <ajhb@manuscriptmanager.net> to me
Fri, 4 Dec 2020, 19:28

Manuscript: AJHB-2020-144/R1 RESUBMISSION - (1407) - Predicting Factors on Modeling Healthy Behavior: A Systematic Review
Date submitted: 2020-12-03

Dear Dr. LEMAN

It is a pleasure to inform you that your manuscript has been temporarily accepted for publication; however, before we can provide FINAL acceptance, your paper must be formatted exactly according to the Final Checklist and Final Cover Page Example. Please pay particular attention to the reference section and table requirements. Moreover, be sure to mirror the Cover Page and include author(s) and bio(s) with the next version in one file. We are now concentrating on format.

IMPORTANT:
The discrepancy between the Author Guidelines and this request to adhere to the Final Checklist is not a journal inconsistency but distinctive requirements at different stages in the review process. Like other journals, we delay the meticulous detail outlined on the Final Checklist until a positive publishing decision is made. To proceed to Acceptance, you MUST now adhere to the Final Checklist and the Final Cover Page Example.

The Final Checklist and Final Cover Page Example can be accessed from the link below. Please follow directions noted within the Checklist and apply ONLY to the latest manuscript submitted. Be sure to remove any highlighted portions, Track Changes, or notes noted directly on the

13:00 20/12/2022

https://mail.google.com/mail/u/0/#search/E.Glover%40ajhb.org/FMfcgwxKjnSwKQpDwdsrPRFXrHCX...

Gmail E.Glover@ajhb.org Active

Compose

Mail: Inbox, Starred, Drafts (12), More, Labels (+)

Chat, Spaces, Meet

5 of 8

The Final Checklist and Final Cover Page Example can be accessed from the link below. Please follow directions noted within the Checklist and apply ONLY to the latest manuscript submitted. Be sure to remove any highlighted portions, Track Changes, or notes noted directly on the manuscript.

PLEASE NOTE:
As noted in the Author Guidelines (<https://ajhb.org/submitting-manuscript/author-guidelines/>), each published paper is allowed a combination of 6 tables and/or figures at no cost. Should you exceed this total you have four options; accept the fees (see <https://ajhb.org/submitting-manuscript/fees/>), reduce to 6 total tables and figures, provide a link that leads readers to the tables/figures, or provide your email where readers can secure copies of the tables/figures. Also, there are page limits for supplementary/appendices materials.

Please resubmit your revised manuscript via the online system within 15 days.

Once all items have been successfully addressed, we will formally accept your paper and place in the queue for the grammarian then the typesetter. However, it is not usual for us to return the manuscript several times for failure to accurately address the Final Checklist and Final Cover Page Example so the quicker both lists are accurately addressed the sooner you get published!

Elbert D. Glover, PhD
Editor
American Journal of Health Behavior

FINAL CHECKLIST
<https://ajhb.org/submitting-manuscript/author-final-checklist/>

FINAL COVER PAGE EXAMPLE

13:00 20/12/2022

https://mail.google.com/mail/u/0/#search/E.Glover%40ajhb.org/FMfcgwxKjnSwKQpDwdsrPRFXrHCX...

Gmail E.Glover@ajhb.org Active

Compose

Mail: Inbox, Starred, Drafts (12), More, Labels (+)

Chat, Spaces, Meet

5 of 8

<https://ajhb.org/submitting-manuscript/author-final-checklist/>

FINAL COVER PAGE EXAMPLE
<https://ajhb.org/submitting-manuscript/cover-page/>

(Note: If the above link have been deactivated, copy the link into the address line of a web-browser or go directly to our site at <https://ajhb.org/>.)

To satisfy US copyright laws, we MUST inform you of the dated release of copyright. Your submission date served as the dated release of copyright. NO FURTHER ACTION IS REQUIRED.

YOUR SIGN IN INFORMATION
Website: <https://www.manuscriptmanager.net/ajhb>
Email: micpatlem1982@unsrat.ac.id

Forgot password or not signed in before?
Click the URL below to create/reset your password.
[https://www.manuscriptmanager.net/sLib/v4/retrieve_pw.php?paramScreen=hVeVm7geUzvS4qQ5iVofFCXj\(f4EojEGQjCfnjUrDk0=](https://www.manuscriptmanager.net/sLib/v4/retrieve_pw.php?paramScreen=hVeVm7geUzvS4qQ5iVofFCXj(f4EojEGQjCfnjUrDk0=)

Michael Andreas Leman <micpatlem1982@unsrat.ac.id>
to Elbert

Fri, 4 Dec 2020, 20:52

Dear

13:01 20/12/2022

https://mail.google.com/mail/u/0/#search/E.Glover%40ajhb.org/FMfcgwKjnSwKQpDwdsrPRFXrHCX...

Gmail E.Glover@ajhb.org Active UNSRAT M

Compose

Mail: Inbox, Starred, Drafts (12), More, Labels (+)

5 of 8

https://www.manuscriptmanager.net/submit/v4/revise_dw.php?paramscreen=nvevm/geuzv24qz3iv01r3AJ9cojF3ujUjijurLUKv#

Michael Andreas Leman <micpatem1982@unsrat.ac.id> to Elbert
Fri, 4 Dec 2020, 20:52

Dear
Elbert D. Glover, PhD
Editor
American Journal of Health Behavior

Thank you for this good news. I'm working with this revision. Thank you for give us chance to resubmit our work.

Sincerely yours,
Michael

Reply Forward

13:01 20/12/2022

https://mail.google.com/mail/u/0/#search/E.Glover%40ajhb.org/FMfcgwKjnVGxXSIZSLBdKvKcjqrcjGV

Gmail E.Glover@ajhb.org Active UNSRAT M

Compose

Mail: Inbox, Starred, Drafts (12), More, Labels (+)

4 of 8

AJHB-2020-144/R2 RESUBMISSION - (1407) Manuscript submission confirmation Inbox x

American Journal of Health Behavior <ajhb@manuscriptmanager.net> to me
Sun, 6 Dec 2020, 06:21

Submission: AJHB-2020-144/R2 RESUBMISSION - (1407) - Predicting Factors on Modeling Healthy Behavior: A Systematic Review

Attention: Dr. LEMAN

Automatic notification:

Thank you very much for submitting the above manuscript.

The manuscript is being evaluated and we will contact you as soon as a decision has been made.

Please inform us by return of email if the version posted on the web site does not correspond with the version that was submitted.

The progress of your manuscript can be followed from the progress report accessed from your account overview.

13:02 20/12/2022

https://mail.google.com/mail/u/0/#search/E.Glover%40ajhb.org/FMfcgwxKjnVGxXStZSLBdKyKcjrGjGV

Gmail E.Glover@ajhb.org Active

Compose

Mail: Inbox, Starred, Drafts (12), More, Labels (+)

4 of 8

The manuscript is being evaluated and we will contact you as soon as a decision has been made.

Please inform us by return of email if the version posted on the web site does not correspond with the version that was submitted.

The progress of your manuscript can be followed from the progress report accessed from your account overview.

Yours sincerely,
The Editorial Office

YOUR SIGN IN INFORMATION
Website: <https://www.manuscriptmanager.net/ajhb>
Email: micpatem1982@unsrat.ac.id

Forgot password or not signed in before?
Click the URL below to create/reset your password.
https://www.manuscriptmanager.net/sLib/v4/retrieve_pw.php?paramScreen=yplVyt6J2wIke4VvKIOsX/Rdpu9wmRFAnRGpbwgU0h4=

Reply Forward

https://www.manuscriptmanager.net/sLib/v4/retrieve_pw.php?paramScreen...

13:02 20/12/2022

https://mail.google.com/mail/u/0/#search/E.Glover%40ajhb.org/FMfcgwxKjnWPFgKqnmFVbrmh8bLvd...

Gmail E.Glover@ajhb.org Active

Compose

Mail: Inbox, Starred, Drafts (12), More, Labels (+)

3 of 8

American Journal of Health Behavior <ajhb@manuscriptmanager.net> to me
Sun, 6 Dec 2020, 16:40

Manuscript: AJHB-2020-144/R2 RESUBMISSION - (1407) - Predicting Factors on Modeling Healthy Behavior: A Systematic Review
Date submitted: 2020-12-05

Dear Dr. LEMAN

It is a pleasure to inform you that your manuscript is now acceptable for publication in the American Journal of Health Behavior.

Also, so there is no misunderstanding and it has been noted several times throughout this process there is a publishing fee. You will receive the invoice with the proofs.

Your manuscript will now be forwarded to the grammarian and you will receive the typeset manuscript proofs in due course.

Thank you for submitting this valuable contribution to the health behavior research literature.

Please note that all future correspondence regarding this manuscript will be directly with me at e.glover@ajhb.org.

My best estimate is that your manuscript will be published in the March/April 2021 issue of the journal. You should receive proofs 3-5 weeks before publishing date.

Elbert D. Glover, PhD
Editor
American Journal of Health Behavior

13:03 20/12/2022

https://mail.google.com/mail/u/0/#search/E.Glover%40ajhb.org/FMfcgwxKjnWPFgKqnmFVbrmhBbLvd...

Gmail E.Glover@ajhb.org Active

3 of 8

Elbert D. Glover, PhD
Editor
American Journal of Health Behavior

YOUR SIGN IN INFORMATION
Website: <https://www.manuscriptmanager.net/ajhb>
Email: micpatlem1982@unsrat.ac.id

Forgot password or not signed in before?
Click the URL below to create/reset your password.
https://www.manuscriptmanager.net/sLib/v4/retrieve_pw.php?paramScreen=2gyrpkhLjwdAmREMjWkfoHofM1s8aEeZs7n1cqG7b4=

Michael Andreas Leman <micpatlem1982@unsrat.ac.id>
to Elbert

Sun, 6 Dec 2020, 17:01

Dear
Elbert D. Glover, PhD
Editor
American Journal of Health Behavior

Thank you for accepting our manuscript, and we are happy to publish it in the American Journal of Health Behavior. For the publication fee, is there any information regarding on how to pay this fee? Or, if you don't mind, maybe you can send me a direct link to the payment of this

13:04
20/12/2022

https://mail.google.com/mail/u/0/#search/E.Glover%40ajhb.org/FMfcgwxKjnWPFgKqnmFVbrmhBbLvd...

Gmail E.Glover@ajhb.org Active

3 of 8

Thank you for accepting our manuscript, and we are happy to publish it in the American Journal of Health Behavior. For the publication fee, is there any information regarding on how to pay this fee? Or, if you don't mind, maybe you can send me a direct link to the payment of this publication fee? Thank you for giving us this chance to publish our work in the American Journal of Health Behavior.

Sincerely yours,
Michael Andreas Leman

Elbert Glover <e.glover@ajhb.org>
to me

Sun, 6 Dec 2020, 19:14

You will receive an invoice with the proofs. We only accept credit cards (Visa/MasterCard) or an institutional check.

glover

Elbert D. Glover, PhD, FASHA, FAAHB, FRIPH
Editor, American Journal of Health Behavior
PNG Publications
2205-K Oak Ridge Rd, Suite 115-AJHB
Oak Ridge NC 27310 USA
(+1) 240-638-6991
e.glover@ajhb.org
www.ajhb.org

13:04
20/12/2022

https://mail.google.com/mail/u/0/#search/E.Glover%40ajhb.org/FMfcgwxKjnWPFgKqnmFVbrnhBbLvd... Active UNSRAT M

E.Glover@ajhb.org

3 of 8

Oak Ridge NC 27310 USA
(+1) 240-638-6991
eglover@ajhb.org
www.ajhb.org

Michael Andreas Leman <micpatiem1982@unsrat.ac.id> Sun, 6 Dec 2020, 19:33

to Elbert

Dear
Elbert D. Glover, PhD

Thank you for the information.

Reply Forward

13:04
20/12/2022

Predicting Factors on Modeling Health Behavior: A Systematic Review

Michael A. Leman, MMedEd
Mora Claramita, PhD, MHPE
Gandes R. Rahayu, PhD, MMedEd

Objectives: In this study, we summarize current evidence on learning health behaviors through modeling, thereby offering greater insight into the predictors of modeling's effectiveness on health behavior change. **Methods:** We searched 5 electronic bases (PubMed, ProQuest New Platform, EBSCOHost, ERIC, and ScienceDirect) drawing on articles from January 1986 to April 2018. In addition, we performed follow-up searches of unique citations from identified articles. **Results:** Overall, our search identified 3339 articles. Based on inclusion and exclusion criteria, we reviewed 20 qualifying articles across 4 conditions of role modeling: *attention, retention, motor reproduction, and motivation*. Characteristics of role models and observers, use of technology to promote the modeling of health behavior, and use of peers as role models emerged as predictive factors related to *attention*; types of information and adherence to a specific timeframe were related to *retention*. Opportunity to practice a modeled health behavior and a specific timeframe to perform what was observed were key elements for *motor reproduction*. Support by significant others, self-efficacy, self-regulation, and policy incentives were predictive of sustained *motivation*. **Conclusions:** This review highlights several predictive factors in each situation in learning healthy behavior through role modeling. Identification and application of these factors may increase health behavior adoption.

Key words: modeling; health behavior change; healthy behavior; learning; social cognitive theory
*Am J Health Behav.*TM 2021;45(2):258-278
DOI: doi.org/10.5993/AJHB.45.2.7

Health behavior has been defined as “any activity undertaken by a person believing himself to be healthy for preventing disease or detecting it at an asymptomatic stage.”¹ There are limitations to this concept because not all people carry out health behaviors for these purposes. For example, a person with a chronic disease may engage in health behaviors to prevent further physiological damage from the illness they experience. In addition, through engaging in specific health behaviors (eg, healthy diet and exercise), people increase their self-esteem by having an attractive physical appearance. The presence of variations in people's goals for selecting healthy behavior led to the development of a broader definition of health behavior. Conner and Norman^{2,3}

defined health behavior as any activity undertaken to prevent or detect disease to improve health and well-being. Cockerham⁴ described health behavior as the activity undertaken by people to maintain or enhance their health, prevent health problems, or achieve a positive body image.

Furthermore, evolution of a health behavior definition occurred because health behaviors result not only from personal factors, eg, health beliefs, self-efficacy,⁵ but also from strong environmental influences. Expanding on other social learning models, Bandura,⁶ in his social cognitive theory, explained the influence of both personal and environmental factors on behavior in his concept known as reciprocal determinism. Personal factors that influence health behavior include economic reasons,⁷⁻¹¹ and

Michael A. Leman, School of Dentistry, Faculty of Medicine, Universitas Sam Ratulangi, Manado, Indonesia. Mora Claramita, Head of Department and Gandes R. Rahayu, Professor, at the Department of Medical, Health Professions Education and Bioethics, Faculty of Medicine, Public Health, and Nursing, Universitas Gadjah Mada, Yogyakarta, Indonesia.
Correspondence Mr Leman; micpatlem1982@gmail.com

environmental factors include the availability of facilities that support healthy behavior,¹² as well as societal norms that regulate people's conduct of health behaviors,^{13,14} and the presence of other people as role models for practicing health behavior.¹⁵ In the developmental dynamics of social interactions and cognitive processes, these dominant factors facilitate or impede the performance of health behaviors.¹⁶

A role model who is practicing a health behavior could be effective in encouraging others to make health behavior changes^{5,17} because imitating behavior is an instinct that humans learn early in life.¹⁸⁻²⁰ The indirect learning process, known as modeling, is further explained in Bandura's social cognitive theory.⁶ In modeling, 4 conditions are necessary before an individual can model someone else's behavior successfully. Based on this theory, these 4 modeling conditions include *attention*, *retention*, *motor reproduction*, and *motivation*. To learn what is modeled, people first must observe it, create a mental representation of it, reproduce what was modeled while monitoring their performance, and motivate the self to sustain the behavior. Whereas simply observing, imitating, and mimicking a model does not ensure success, recognizing the potential factors related to these 4 conditions helps improve understanding of how modeling more effectively leads to health behavior change.

Numerous studies have been conducted on health behavior change through modeling,²¹⁻²³ but only a few of these describe a specific modeling-learning theory. The main challenge remains on how to increase the effectiveness of modeling for health behavior change. The absence of a systematic review to classify potential factors related to these 4 modeling conditions creates difficulties in building a robust theoretical framework that illuminates the predictors of health behavior change through modeling. Accordingly, we conducted a systematic review to summarize current evidence concerning specific approaches to learning health behavior through that which is modeled. We aimed to explore the potential factors related to the 4 conditions to increase modeling's effect on health behavior change. We hope that this study can initiate deeper learning about the relationship between modeling and health behavior change.

METHODS

Search Strategy and Selection Criteria

We used 5 databases – PubMed, ProQuest New

Platform, EBSCOHost, ERIC, and ScienceDirect, examining the literature from January 1986 to April 2018. We used *learning*, *role modeling/role modeled/role models*, *social cognitive theory/cognitive, social theory*, *health behavior*, *health risk behavior/risky health behaviors*, and *health behavior change* as the key search terms. The complete search strategy is shown in Appendix 1. We also used medical education and medical teacher databases and several online registries of theses and dissertations, ie, open access theses and dissertation (<http://oatd.org>), available theses (www.openthesis.org), British Library Ethos (e-theses online service) (<https://ethos.bl.uk/Home.do>), and electronic theses and dissertations of Universitas Gadjah Mada (lib.ugm.ac.id/ind/). We conducted the literature searches during May and June 2018. Hand searches also were done by following up the reference lists of relevant book chapters and additional pertinent references. Figure 1 illustrates the flow diagram of the complete investigation.

In our initial search, criteria included all literature relating to modeling healthy behavior; we excluded studies that reported modeling of health risk behavior. We included only studies that were written in English. Editorials, essays, and other systematic reviews were excluded from our review. We did not restrict research context, population, and study design. From papers concerning modeling health behavior published recently, we aimed to identify the potential factors, categorized as the predictors in the 4 modeling conditions (attention, retention, motor reproduction, and motivation).

Data Extraction and Quality Assessment

The first author (MAL) independently conducted a computerized search and reviewed all titles. This process was checked by the second author (MC). Relevant abstracts were then screened independently by MAL and MC to identify studies that fit the inclusion criteria. The full articles were evaluated by 2 reviewers (MAL and MC) if a decision could not be made based on the titles and abstracts. We resolved any disagreements through discussion and consensus; if no agreement could be reached, we involved the third author (GRR). Relevant data were extracted by 2 reviewers (MAL and MC) using a standardized form developed before the study and cross-checked. The extracted data included

study characteristics (eg, date of publication, study type), participant characteristics, interventions, outcomes, and author conclusions. When publications lacked sufficient detail for full data extraction, we contacted the original authors to acquire the necessary information.

The quality of each research article was assessed independently by 2 authors (MAL and MC). We used the Best Evidence Medical Education (BEME) extraction sheet validated by BEME Review on Education Portfolios.²⁴ MAL and MC conducted an initial pilot test using a data extraction sheet (Appendix 2). Each author reviewed the same paper, which was randomly selected from included studies. Based on that pilot test, no changes to the data extraction sheet were considered necessary. The pilot-test results were then reviewed by MAL, MC, and GRR for their opinions on the data extraction sheet's suitability. This extraction sheet included 11 quality indicators relating to the study design's appropriateness, results, analysis, and conclusions. Higher-quality studies were considered to be those that met a minimum of 8 of these quality indicators; medium-quality studies met 6 or 7 criteria, and low scoring studies met ≤ 5 of the requirements.

Next, MAL and MC independently reviewed the full articles to determine which studies met our inclusion criteria. The study's appraisal was conducted by scoring each article section based on explicit information contained in the full text by using a data extraction sheet. Two authors (MAL and MC) met to discuss and agree on the decisions. We resolved any disagreements through discussion and consensus, involving a third author (GRR), if needed. To ensure that the abstraction quality was maintained, several studies were separately abstracted by GRR. Where a discrepancy was encountered, further discussion occurred ensure that the work remained focused.

Data Synthesis

We used the narrative analysis method to retrieve relevant information from each article to fulfill our research purpose. MAL and MC coded the extracted information about the potential factors related to the 4 conditions of modeling. Coding differences were resolved through discussion. The potential factors were then categorized into the 4

conditions in modeling. These potential factors were then debated and distilled by all authors and summarized by MAL. All authors were involved in establishing the conceptual framework. These findings were then integrated into a narrative structure and drafted by MAL. The information from all data extraction sheets is summarized and presented in Appendix 3 which can be accessed at <http://bit.ly/Appendix3MAL>.

RESULTS

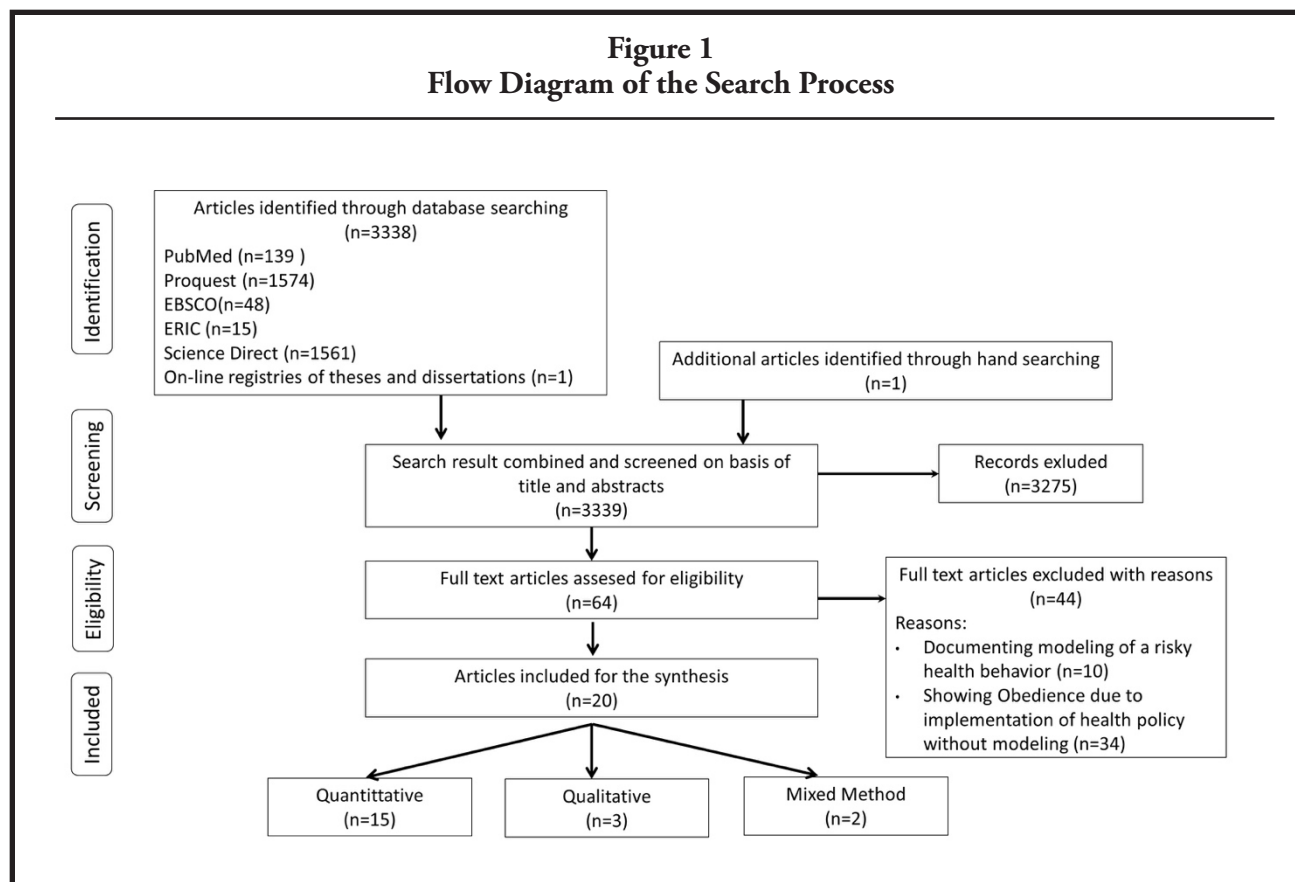
We identified 3339 records, from which 64 potentially eligible articles were reviewed in full-text. Of these, 44 were excluded because they documented the modeling of health risk behavior (N = 10) or showed compliance with a behavior because of health policy implementation (ie, regulation) without modeling (N = 34). There were 20 eligible studies selected for inclusion in our review. Figure 1 is a PRISMA flow diagram that details the literature search process.

Quality and Characteristics of Included Studies

Nine studies focused on physical activity,^{21,23,25-31} 2 on smoking cessation,^{32,33} 6 on eating behavior,^{14,34-38} one on sexual behavior,³⁹ and 2 on combinations of health behaviors, ie, nutrition, exercise and sun protection⁴⁰ and physical activity and eating behavior.⁴¹ The predominant inquiry method used in those studies was mixed methods. Only 6 of 20 studies conducted an intervention. Of the included studies, 8 used questionnaires, 4 used interviews, and 8 used mixed methods (including an interview, focus group, survey, and observation or questionnaire and pedometer measurement).

Only 6 of the 20 studies^{25,29,30,33,36,39} mentioned social cognitive theory, and 4 of 20 papers^{21,36,37,39} used a role model in the study. The largest percentage of articles (35%; N = 7) were from the United States (US), but there was a broad international representation with articles from Canada, New Zealand, the United Kingdom, Denmark, Switzerland, Australia, Chile, Brazil, and China. All selected articles were published between 2000 and 2018. The included studies' quality assessments showed 19 were high-scoring articles, and one was a medium-scoring article; these results are described in Appendix 3 accessed at <http://bit.ly/Appendix3MAL>.

Figure 1
Flow Diagram of the Search Process



Overall Findings

The studies identified several main domains as predictive factors that could be categorized into the aforementioned 4 conditions that occur in modeling. We summarize these findings in Appendix 4 and offer additional detail below.

The 4 Conditions in Modeling

Attention. We identified 16 studies with findings that could be defined as predictive factors related to attention in modeling. These factors could be divided into 4 domains: an influential role model's characteristics, the characteristics of the observer, the use of technology to model healthy behavior, and peers as role models in promoting healthy behavior. To be considered an influential role model of healthy behavior, a person must be competent,^{27,36} have a specific skill to model healthy behavior,^{34,36} have a conscious awareness of being a positive role model,^{15,26,30,31,34,40,41} and respect the autonomy of others.^{32,36} The characteristics of observers also influence attention to the health behavior exhibited

by role models.³⁵ Additionally, using technology to deliver health behavior information increases people's attention.^{23,25,33} One study³⁹ found that using peers as role models effectively increases a person's awareness of a healthy behavior being modeled.

Retention. Two studies highlighted predictive factors related to the retention condition and modeling. Knowing the benefits of performing a health behavior (or the risk of not performing that behavior) and health behavior information also influence whether this information becomes committed to memory.³⁶ The time interval from observation to the modeled behavior's performance is also described in terms of whether the information captured from the role model committed to long-term memory or not.²¹

Motor reproduction. Three studies highlighted the importance of having an opportunity to perform a healthy behavior.^{25,32,36} Without opportunity to reproduce the modeled and observed behavior, the information cannot be retained for long by the human brain. Therefore, the interval of

time from observation to opportunity to reproduce the behavior is also essential for successful translation of the modeled behavior to actual health behavior change.²¹

Motivation. The environment plays a vital role in maintaining a person's motivation to carry out health behaviors. One study highlighted the importance of a role model's active involvement when they want to model a health behavior to others.²⁹ Parents have the most influence on their children when they want to teach their children about healthy behavior.^{23,26,28,30-32,37,41} In modeling healthy behavior, peers^{35,39} and all family or community members^{14,26,28,32,34,40} also make a significant contribution in support of health behavior change. To maintain motivation for healthy behavior, a person needs to set a specific behavioral goal.^{23,29,36} Policy that regulates the environment also supports healthy behavior performance^{14,34,38,40,41} and serves as a further contingent reward.²³ Some studies highlight that a good family relationship provides social support for health behavior change in children and facilitates discussion about any unhealthy or disease conditions.^{32,33,36,38,41} People also need self-efficacy^{21,25,26,35} and self-regulation^{32,36} to motivate themselves to perform healthy behavior consistently.

DISCUSSION

In this review, we found many predictive factors that could be strategies for increasing the effect of modeling on the subsequent adoption of a health behavior. The evidence from this review highlights some characteristics of role models that can improve people's attentiveness toward the healthy behavior they perform. Most studies^{14,26,30,31,34,40,41} we included in our review highlight the importance of having conscious awareness of being a role model. Parents who have a conscious awareness that their behavior can impact their children's behavior are more likely to take on an active role in that regard.^{30,31} Parents realize that they have a responsibility to be primary role models.⁴¹ Also, they are aware of the need to be consistent in what they say and do with regard to health behaviors.^{14,40} Developing a conscious awareness of being role models when interacting with others is crucial to being influential.⁴²

To attract the attention of others, a role model

must be competent. Role models must know the benefits of the health behavior they model,³⁶ and have the specific skills to display them to children.³⁴ In addition to being competent, several studies^{23,24,33} we included describe that using technology to promote health behavior is also useful for promoting attentiveness. Moreover, an influential role model knows how to create a safe environment for others to learn healthy behavior. Shanon et al²⁷ and Pedersen et al³⁶ describe that parents can create a safe environment for their children by giving them a chance to discuss any problems about performance of health behaviors. When children discuss issues about health behavior with their parents, they are already attentive to the modeled behavior, which is the first step of successful modeling and behavior adoption.^{5,6} Discussion with parents can enhance self-efficacy, and elevate the likelihood of behavior change occurring.⁶ Also, getting feedback from a role model can facilitate cognitive rehearsal and enactment, which are needed to retain the information in long-term memory.⁶

Having peers as role models increases the possibility of behavior adoption. Layzer et al³⁹ found that a sexual health education program that facilitated peer-learning created a safe environment for students and helped them across a range of issues related to social well-being and sexual health. However, role models' attitude about respecting others' autonomy is also crucial to facilitating health behavior change. For children to practice self-regulation, parents must provide them with opportunities to manage the behavior they want them to do, while still offering assistance.^{32,36}

People need to remember the information they get from observations of modeled health behavior before performing that behavior themselves. Although this new knowledge is recorded, not all of it may be important to commit to memory.⁶ In this review, we found that the types of information people receive determine how it is translated to behavior.³⁶ Demonstrating the benefit of performing a health behavior compared to showing the consequences of adopting a risk behavior may increase the probability that the information gets translated successfully into a healthy behavior, but this topic is still controversial. Green and Witte⁴⁴ found that delivering information about the negative consequences of unhealthy sexual behavior was

more effective in Africa than in the US. Therefore, cultural relevance may be important as a behavioral determinant.²²

In this review, we also considered a specific timeframe between the modeled behavior and its observation stage to the actual performing of a health behavior. Parent and Fortin²¹ found no significant differences between the intervention (a group accompanied by role model) and control group on self-efficacy expectation for general activities, walking, climbing stairs, and self-reported activity for walking at 4 weeks after discharge. However, future study is needed to investigate a more precise timeframe of how long the information obtained from the observation of healthy behavior from role models could be retained in memory.

Information committed to memory should be strengthened to increase the possibility that health information is translated into the desired behavior. People need an opportunity to attempt healthy behavior because by practicing it, approximately 90% of the information will be retained by the brain.⁴⁵ A safe environment is needed to encourage health behavior learned through modeling. A role model should offer frequent opportunities for others to practice the behavior that was observed. Parents must respond positively to children when they want to be active participants – for example – in the promotion of healthy eating among family members.³⁶ Some studies^{15,26,28,31,34,40} in our review also highlight the roles of social support from people in the immediate environment (eg, parents, friends, teachers, and other family members) to increasing the effectiveness of modeled health behaviors. They should be rehearsed together consistently to increase the possibility of modeling being reflected in subsequent health behavior.^{23,25,26,28}

Because health behavior must be practiced continuously, people need the appropriate incentives. We highlighted the environment's role in producing both positive and negative influence relative to health behavior. Health intervention programs and policies in schools positively have influenced the physical activity of pre-adolescent girls.²³ Providing rewards/incentives for eating fruits or vegetables can motivate children to sustain that behavior.²³ However, the presence of a policy that forces people toward particular health behaviors does not always guarantee that they will achieve those behaviors.¹³

The involvement of significant others in the health behavior, ie, parents and all family members, may be more vital than the mere solitary existence of a given policy. Olivares et al²⁸ found that parents' and other family members' active involvement are more effective than that of teachers in students' maintenance of desirable health behavior – perhaps because parents have more time to interact with their children than does a teacher. They have more opportunities to control and immediately intervene when they detect a child's tendency toward unhealthy behavior.³⁸ Cheney et al³² found that a strong relationship with parents could protect adolescents and young adults from tobacco use. Pedersen et al³⁶ found that the availability of time to discuss conflicting issues about health could increase children's involvement in physical activity. However, Cheney et al³² found that gender also influences receptivity to parent-child discussion, with boys more likely to talk with their father than mother and vice versa. Bylund et al⁴⁰ found that the college environment negatively influences health behaviors that students had practiced at home. Therefore, people need self-regulation as much as self-efficacy to increase learn and maintain health behaviors derived from modeling.^{28,46} Even though self-efficacy directly influences motivation to perform health behavior,^{25,36} health behavior change is more effective when a person also has self-regulation.³⁶

Strengths and Limitations of this Review

To the best of our knowledge, this is the first systematic review to categorize predictive factors into the 4 main conditions of modeling healthy behavior. For our review, we used a detailed search strategy to determine the potential factors related to the 4 main conditions necessary before an individual can be successful modeling someone else's health behavior: attention, retention, motor reproduction, and motivation. We also categorized the factors we found in the literature that may be investigated in future studies.

This study has several limitations. We included only articles that were written in English. Only a few of the included studies used role models to promote health behavior, so generalization must be approached with caution. We used only 5 search engines to conduct the literature search. No analyses were done on the level of agreement among

the reviewers. For future research, we recommend investigating predictive factors already categorized according to the 4 main modeling conditions to strengthen social cognitive theory's application concerning adoption of health behaviors learned through modeling. In future studies, we also recommend combining culturally-sensitive meta-analyses with systematic and scoping reviews to evaluate the quality of the included studies on this topic.

Conclusions

We found several potential factors in each condition of modeling. An influential role model has specific skills for modeling health behavior and respecting the autonomy of others; moreover, age, gender of the observer, use of technology in modeling health behavior, and using peers as healthy role models were potential factors in attracting attention to the behavior. Noting a specific timeframe for performing the modeled health behavior and for applying the relevant information were potential factors for retention. Opportunity to perform a modeled health behavior and a specific timeframe to perform what was observed were key elements for successful motor reproduction. Environmental influences (eg, parents' active involvement in modeling healthy behavior, available of rewards/incentives, and availability of supportive policy), self-efficacy, and self-regulation were potential factors for effective motivation. By understanding these factors, we are better able to design and plan appropriate and responsive interventions to increase the learning of health behaviors through modeling. In the future studies need to focus on the factors in each condition of modeling, and to address each factor's strength in predicting health behavior change linked to social cognitive theory.

Human Subjects Approval Statement

This study did not involve original data collection with human subjects, and therefore, was exempt from review. The datasets used and analyzed are available from the corresponding author.

Conflicts of Interest Disclosure Statement

The authors report no conflict of interest. The authors alone are responsible for the content and writing the article.

Acknowledgements

The authors thank Mrs. Pawestri Agustini, AMD., for helping us organize theses of the master's students in the Department of Medical, Health Professions Education and Bioethics, Faculty of Medicine, Public Health and Nursing based on graduation year while the authors were conducting hand searches.

References

1. Kasl S, Cobb S. Health behavior, illness behavior, and sick role behavior. *Arch Environ Health*. 1966;12:246-266.
2. Conner M, Norman P. Predicting health behaviour: a social cognition approach. In Conner M, Norman P, eds. *Predicting Health Behaviour: Research and Practice with Social Cognition Models*. Buckingham, UK: Open University Press; 1995:2.
3. Conner M, Norman P. Predicting and changing health behaviour: a social cognition approach. In Conner M, Norman P, eds. *Predicting Health Behaviour: Research and Practice with Social Cognition Models*. 3rd ed. Maidenhead, UK: Open University Press; 2015:2.
4. Cockerham WC. *Medical Sociology*. 12th ed. Upper Saddle River, NJ: Pearson Prentice-Hall; 2012:120.
5. Bandura A. Health promotion by social cognitive means. *Health Educ Behav*. 2004;31(2):143-164.
6. Bandura A. *Social Foundations of Thought and Action: A Social Cognitive Theory*. Englewood Cliffs, NJ: Prentice-Hall Inc; 1986:51-70.
7. Humphreys BR, Ruseski JE. Economic determinants of participation in physical activity and sport. Working Paper 0613. International Association of Sports Economics; North American Association of Sports Economists. https://college.holycross.edu/RePEc/spe/HumphreysRuseski_Participation.pdf. Published July 2006. Accessed January 8, 2021.
8. Appelhans BM, Miliron BJ, Woolf K, et al Socioeconomic status, energy cost, and nutrient content of supermarket food purchases. *Am J Prev Med*. 2012;42(4):398-402.
9. Kari JT, Pehkonen J, Hirvensalo M, et al Income and physical activity among adults: evidence from self-reported and pedometerbased physical activity measurements. *PLoS One*. 2015;10(8):e0135651.
10. Pecheya R, Monsivais P. Socioeconomic inequalities in the healthiness of food choices: exploring the contributions of food expenditures. *Prev Med*. 2016;7(88):203-209.
11. French SA, Tangney CC, Crane MM, et al Nutrition quality of food purchases varies by household income: the SHoPPER Study. *BMC Public Health*. 2019;19:231.
12. Voorhees CC, Yan AF, Clifton KJ, et al Neighborhood environment, self-efficacy, and physical activity in urban adolescent. *Am J Health Behav*. 2011;35(6):674-688.
13. Dziewaltowski DA. Healthy youth places promoting nutrition and physical activity. *Health Educ Res*. 2002;17(5):541-551.
14. Eisenberg CM, Ayala GX, Crespo NC, et al Examining

- multiple parenting behaviors on young children's dietary fat consumption. *J Nutr Educ Behav.* 2012;44(4):302-309.
15. Angoorani P, Heshmat R, Ejtahed HS, et al The association of parental obesity with physical activity and sedentary behaviors of their children: the CASPIAN-V Study. *J Pediatr (Rio J).* 2018;94(4):410-418.
 16. Witherington DC, Boom J. Developmental dynamics: past, present and future. *Hum Dev.* 2019;63:264-276.
 17. Bandura A. Health promotion from the perspective of social cognitive theory. *Psychol Health.* 1998;13(4):623-649.
 18. James W. *The Principles of Psychology.* New York, NY: Henry Holt and Company; 1890.
 19. Meltzoff A, Gopnik A. The role of imitation in understanding persons and developing a theory of mind. In Baron-Cohen S, Tager-Flusberg H, Cohen DJ, eds. *Understanding Other Minds.* New York, NY: Oxford University Press; 1993:335-366.
 20. Blackmore S. The power of memes. *Sci Am.* 2000;283(4):52-61.
 21. Parent N, Fortin F. A randomized, controlled trial of vicarious experience through peer support for male first-time cardiac surgery patients: impact on anxiety, self-efficacy expectation, and self-reported activity. *Heart Lung.* 2000;29(6):389-400.
 22. Pappas-DeLuca KA, Kraft JM, Galavotti C, et al. Entertainment-education radio serial drama and outcomes related to HIV testing in Botswana. *AIDS Educ Prev.* 2008;20(6):486-503.
 23. Hardman CA, Horne PJ, Lowe CF. A home-based intervention to increase physical activity in girls: the fit "n" fun Dudes program. *J Exerc Sci Fit.* 2009;7(1):1-8.
 24. Buckley S, Coleman J, Davison I, et al. The educational effects of portfolios on undergraduate student learning: a Best Evidence Medical Education (BEME) systematic review. BEME Guide No. 11. *Med Teach.* 2009;31(4):340-355.
 25. Eather N, Morgan PJ, Lubans DR. Social support from teachers mediates physical activity behavior change in children participating in the fit-4-fun intervention. *Int J Behav Nutr Phys Act.* 2013;10:68. doi:10.1186/1479-5868-10-68
 26. Cheng LA, Mendonça G, de Farias Júnior JC. Physical activity in adolescents: analysis of the social influence of parents and friends. *J Pediatr (Rio J).* 2014;90(1):35-41.
 27. Shannon CS. Facilitating physically active leisure for children who are overweight. *J Leis Res.* 2014;46(4):395-418.
 28. Olivares PR, Cossio-Bolaños MA, Gomez-Campos R, et al. Influence of parents and physical education teachers in adolescent physical activity. *Int J Clin Health Psychol.* 2015;15(2):113-120.
 29. Rogers LQ, Shah P, Dunnington G, et al. Social cognitive theory and physical activity during breast cancer treatment. *Oncol Nurs Forum.* 2005; 32(4):807-815.
 30. Brunet J, Gaudet J, Wing EK, Bélanger M. Parents' participation in physical activity predicts maintenance of some, but not all, types of physical activity in offspring during early adolescence: a prospective longitudinal study. *J Sport Health Sci.* 2019;8(3):273-279. doi:10.1016/j.jshs.2017.04.012
 31. Liu Y, Zhang Y, Chen S, et al. Associations between parental support for physical activity and moderate-to-vigorous physical activity among Chinese school children: a cross-sectional study. *J Sport Health Sci.* 2017;6:410-415.
 32. Cheney MK, Oman RF, Vesely SK. Prospective associations among youth assets in young adults and tobacco use. *Am J Prev Med.* 2015;48(1):S94-S101.
 33. Whittaker R, Dorey E, Bramley D, et al. A theory-based video messaging mobile phone intervention for smoking cessation: randomized controlled trial. *J Med Internet Res.* 2011;13(1):e10. doi:10.2196/jmir.1553
 34. Tibbs T, Haire-Joshu D, Schechtman KB, et al. The relationship between parental modeling, eating patterns, and dietary intake among African-American parents. *J Am Diet Assoc.* 2001;101:535-541.
 35. Wroblewski MM. The challenge of teen nutrition: an ecological view of sociocognitive influences on urban, African-American adolescent diet quality. [doctoral dissertation]. College Park, MD: University of Maryland; 2010. https://drum.lib.umd.edu/bitstream/handle/1903/10918/Wroblewski_umd_0117E_11579.pdf?sequence=1&isAllowed=y . Published 2010. Accessed January 8, 2021.
 36. Pedersen S, Grønhøj A, Bech-Larsen T. Family members' roles in healthy-eating socialization based on a healthy-eating intervention. *Young Consum.* 2012;13(3):208-223.
 37. Blissett J, Bennett C, Fogel A, et al. Parental modelling and prompting effects on acceptance of a novel fruit in 2-4-year-old children are dependent on children's food responsiveness. *Br J Nutr.* 2016;115:554-564.
 38. Suggs LS, Della Bella S, Rangelov N, Marques-Vidal P. Is it better at home with my family? The effects of people and place on children's eating behavior. *Appetite.* 2018;121:111-118.
 39. Layzer C, Rosapep L, Barr S. A peer education program: delivering highly reliable sexual health promotion messages in schools. *J Adolesc Health.* 2014;54(3 Suppl):S70-S77.
 40. Bylund CL, Baxter LA, Imes RS, Wolf B. Parental rule socialization for preventive health and adolescent rule compliance. *Fam Relat.* 2010;59(1):1-13.
 41. Walsh AD, Hesketh KD, van der Pligt P, et al. Fathers' perspectives on the diets and physical activity behaviours of their young children. *PLoS One.* 2017;12(6):e0179210. doi:10.1371/journal.pone.0179210
 42. Passi V, Johnson S, Peile ED, et al. Doctor role modelling in medical education: BEME Guide No. 27. *Med Teach.* 2013;35(9):e1422-e1436.
 43. Black B, Ingman MS, Janes J. Physical therapists' role in health promotion as perceived by the patient: a descriptive survey. *Phys Ther.* 2016;96:1588-1596.
 44. Green EC, Witte K. Can fear arousal in public health campaigns contribute to the decline of HIV prevalence? *J Health Commun.* 2006;11(3):245-259.
 45. Edgar D. *Audiovisual Methods in Teaching.* New York, NY: Holt, Rinehart and Winston, Inc; 1969.
 46. Yodmongkol P, Jaimung T, Chakpitak, Surephong P. Learning innovative maternal instinct: activity designing semantic factors of alcohol modification in rural communities of Thailand. *International Education Studies.* 2017;7(8):44-55.

Appendix 1 Search Strategy

Database	Search strategy
PubMed	(((((learning) AND role model*[Title/Abstract]) AND modeling[Title/Abstract]) AND health behavior) AND health behavior change) AND health risk behavior) OR risky health behavior) AND social cognitive theory
ProQuest New Platform	(health behavior) AND (health behavior change) AND (role modeling) OR (role modeled) OR (role models) AND (social cognitive theory) OR (cognitive social theory)
EBSCOHost	learning AND AB “role modeling” OR AB “role modeled” OR AB ”role models” AND “Social cognitive theory” OR “cognitive social theory” AND AB “health behavior” AND “health risk behavior” OR “risky health behaviors” AND “health behavior change”
ERIC	learning AND “role modeling” OR “role modeled” OR “role models” AND “social cognitive theory” AND “health behavior” AND “health risk behavior” OR “risky health behaviors” AND “Health behavior change”
ScienceDirect	“health behavior” AND “health risk behavior” OR “risky health behaviors” AND “health behavior change” AND “role modeling” OR “role modeled” OR “role models” AND “social cognitive theory” OR “cognitive social theory” AND learning

Appendix 2 BEME Data Extraction Sheet

Section 1. Administrative

Reviewer	
Title	
Year	
University, Country	
Authors	

Section 2. Summary of papers according to quality indicators (details below)

No.	Quality indicator	Score (0 or 1)	Summary
1	Research question		
2	Study subjects		
3	Data collection method		
4	Completeness of Data		
5	Control of confounding		
6	Analysis of results		
7	Conclusions		
8	Reproducibility		
9	Prospective		
10	Ethical issues		
11	Triangulation		

Section 3. Documented influences of learning a healthy behavior through modeling

--

Section 4. Any other comments regarding the article

--

- BEME scoring taken from BEME review on E-Portfolios
- Quality indicators for all studies. Quality indicators against which all studies were assessed are given, together with clarification of meaning in each case.
- Quality assessment of studies. To assess the quality of included studies, a series of 11 quality ‘indicators’ was developed. These are related to the appropriateness of the study design, conduct, results analysis, and conclusions. Higher-quality studies were considered to be those which met a minimum of 8 of these 11 indicators.

Quality Indicator Details

1. Research question: Is the research question(s) or hypothesis clearly stated?
2. Study subjects: Is the subject group appropriate for the study being carried out (number, characteristics, selection, and homogeneity)?
3. ‘Data’ collection methods: Are the methods used (qualitative or quantitative) reliable and valid for the research question and context?
4. Completeness of ‘data’: Have subjects dropped out? Is the attrition rate less than 50%? For questionnaire based studies, is the response rate acceptable (60% or above)?
5. Control for confounding: Have multiple factors/variables been removed or accounted for where possible?
6. Analysis of results: Are the statistical or other methods of results analysis used appropriate?
7. Conclusions: Is it clear that the data justify the conclusions drawn?
8. Reproducibility: Could the study be repeated by other researchers?
9. Prospective: Does the study look forwards in time (prospective) rather than backwards (retrospective)?
10. Ethical issues: Were all relevant ethical issues addressed?
11. Triangulation: Were results supported by data from more than one source?

Appendix 3 The Summary of the Included Studies

(Due to the number studies and the size of the appendix, Appendix 3 can be accessed at: <http://bit.ly/Appendix3MAL>)

Appendix 4 The Summary of Predicting Factors to Increase the Effectiveness of Learning Healthy Behavior through Role Modeling Based on the 4 Conditions of Role Modeling

The condition which occurs in role modeling	The predicting factors to increase the effectiveness of learning healthy behavior through role modeling
Attention	<ul style="list-style-type: none"> ▪ The characteristics of an influential role model: <ul style="list-style-type: none"> ✓ The model must be competent (Pedersen et al, 2012; Shannon, 2014) and have a specific skill to model a health behavior (Tibbs et al, 2001; Pedersen et al, 2012); ✓ The model has a conscious awareness of being a positive role model (Tibbs et al, 2001; Bylund et al, 2010; Eisenberg et al, 2012; Cheng et al, 2014; Liu et al, 2017; Brunet et al, 2017; Walsh et al, 2017); and, ✓ The model respects the autonomy of others (Pedersen et al, 2012; Cheney et al, 2015). ▪ The characteristics of observer, ie, age and gender (Wroblewski, 2010). ▪ The use of technology to model healthy behavior (Hardman et al, 2009; Whittaker et al, 2011; Eather et al, 2013). ▪ Peer as a role model in promoting healthy behavior (Layzer et al, 2014).
Retention	<ul style="list-style-type: none"> ▪ A specific timeframe from observation to the performance of the modeled behavior (Parent and Fortin, 2000). ▪ The types of healthy behavior information: positive or negative information (Pedersen et al, 2012).
Motor reproduction	<ul style="list-style-type: none"> ▪ The availability of opportunity to perform one healthy behavior (Pedersen et al, 2012; Eather et al, 2013; Cheney et al, 2015). ▪ A specific timeframe to perform one healthy behavior which observed from the model (Parent and Fortin, 2000).
Motivation	<ul style="list-style-type: none"> ▪ The environmental support, eg, the active involvement of models in a healthy behavior (Rogers et al, 2005); the involvement of parents (Hardman et al, 2009; Cheng et al, 2014; Cheney et al, 2015; Olivares et al, 2015; Blisset et al, 2016; Liu et al, 2017; Brunet et al, 2017; Walsh et al, 2017), peers (Layzer et al, 2014; Wroblewski, 2010), and all members of the family in the healthy behavior (Tibbs et al, 2001; Bylund et al, 2010; Eisenberg et al, 2012; Cheng et al, 2014; Cheney et al, 2015; Olivares et al, 2015); rewards (Hardman et al, 2009); a policy of doing healthy behavior in environment (Tibbs et al, 2001; Bylund et al, 2010; Eisenberg et al, 2012; Walsh et al, 2017; Suggs et al, 2018); a strong relationship with mother or father (Cheney et al, 2015); specific target of doing a healthy behavior (Rogers et al, 2005; Hardman et al, 2009; Pedersen et al, 2012); and, the opportunity to discuss a conflicting healthy behavior (Whittaker et al, 2011; Pedersen et al, 2012; Cheney et al, 2015; Walsh et al, 2017; Suggs et al, 2018). ▪ Self-efficacy (Parent and Fortin, 2000; Wroblewski, 2010; Eather et al, 2013; Cheng et al, 2014). ▪ Self-regulation owned by one person (Pedersen et al, 2012; Cheney et al, 2015).