

Morphological and genetic
characteristics of lightfoot crab
Grapsus albolineatus Latreille
in Milbert, 1812 from Manado
Bay, North Sulawesi

by Darus Sa'adah Johanis Paransa 2

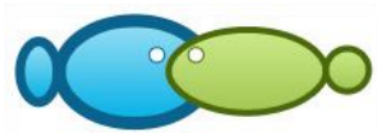
Submission date: 30-May-2023 08:22AM (UTC+0700)

Submission ID: 2104891169

File name: URNAL_INTERNASIONAL_-_2019_-_AACL_MORFOLOGI-DNA_-_DSJPARANSA.pdf (456.8K)

Word count: 3000

Character count: 17181



4

Morphological and genetic characteristics of lightfoot crab *Grapsus albolineatus* Latreille in Milbert, 1812 from Manado Bay, North Sulawesi

Darus Saadah J. Paransa, Desy M. H. Mantiri, Cyska Lumenta, Medy Ompi, Silvester B. Pratasik

5

Faculty of Fisheries and Marine Science, Sam Ratulangi University, Jl. Kampus Bahu, Manado, 95115, North Sulawesi, Indonesia. Corresponding author: D. S. J. Paransa, darusparansa@unsrat.ac.id

Abstract. Crustaceans possess the specificity on their carapace, diverse color. Crabs of family Grapsidae, especially genus *Grapsus*, occur in high numbers in the coast of Ranowangko village, Tombariri district, Minahasa, Manado Bay, North Sulawesi, but cannot be consumed. This genus feeds on microalgae attaching on the rocks where they live. Samples were collected through haphazard search at night along 1 km distance of the rocky shore and taken by hand using a flashlight. Species identification was morphologically done using body characters and confirmed with DNA analysis. For DNA analysis, crab muscle was used. Results showed that, the crab was identified as *Grapsus albolineatus* L. Milbert, 1812. This species is, in general, greenish black, reddish black, reddish dark green and have greenish white longitudinal line, four pairs of feet and a pair of claws with purple tip. Molecular identification also confirmed that the crab sample (DP3) had 99% similarity to *G. albolineatus*. Thus, both approaches have strengthened this species occurrence in the coast of Tanahwangko.

Key Words: crustacean, *Grapsidae*, body character, DNA.

Introduction. Crabs are crustacean groups that possess typical carapace of diverse colors. Crabs of family Grapsidae, particularly genus *Grapsus*, comprise *Grapsus albolineatus* Latreille in Milbert, 1812, *Grapsus intermedius* De Man, 1888, *G. longitarsus* Dana, 1851, and *G. tenirustatus* (Herbst, 1783). Grapsid crabs living in the rocky shore are also *Pachygrapsus minutus* A. Milne Edwards, 1873, *P. planifrons* De Man, 1888, *P. fakaravensis* Rathbun, 1907, *P. plicatus* (H. Milne Edwards, 1837) (Poupin & Juncker 2010). They occur in abundance in the rocky shore of Manado Bay coast, North Sulawesi, but they are not edible. Crabs of family Grapsidae are opportunistic feeders (Fratini et al 2018). *Grapsus* sp. feeds on microalgae attached on the rocks where they live. According to Denny & Gaines (2007), these crabs are greenish-black, reddish black, reddish dark green, and have white longitudinal line. Several species of this family have nearly similar carapace color. This interesting color visualization occurs due to the role of pigment distribution in the entire crab body tissues (Maoka 2011). Thin layered chromatographic separation, according to Abdullah et al (2018), has indicated that *G. albolineatus* contains carotenoid, especially β -carotene, β -cryptoxanthin, and astaxanthin.

Morphological species identification is still done especially at the early stage, but for the organisms with similar body shape, color, and size characteristics, it is difficult enough to directly identify. However, it finds limitations and needs relatively long time (Kolondam 2014). Species identification process using the morphological characters has limitation, since body shape, size, and color often change due to the influence of environmental conditions (Reed et al 2013).

Revolution in molecular field pioneered by Paul Hebert suggested "DNA barcoding" as technique of species identification in 2003, and has developed up to now. DNA analysis method can be conducted faster, and with only small amount of body tissue, a species of organism can be determined (Walker & Rapley 2009). Genetic characters-

1

based species identification has been recently considered more accurate. These are useful to explain species diversity and distribution (Bucklin et al 2007). Information on genetic diversity can be obtained through protein-coding gene analysis of mitochondrial DNA (Purnami et al 2010).

Cytochrome oxidase subunit 1 (CO1) is one of the coding genes. It is the most conservative protein-coding gene in the genome of animal's mitochondria (Folmer et al 1994). Wilson & Walker (2010) stated that CO1 gene could be used as DNA barcode because it had numerous benefits including editing in small sequence. Therefore, this study aims to identify the shore crab of genus *Grapsus* with molecular DNA and gene amplification using Cytochrome Oxidase Subunit 1 (CO1).

Material and Method. Lightfoot crabs *G. albolineatus* were collected from the coast of Ranowangko village, Tombariri district, Minahasa regency in July 2018. Ranowangko coast belongs to Manado Bay (Figure 1). Sampling location was rocky shore submerged in seawater at the highest tide, and exposed to sunlight at low tide. This area is grown with fertile algae on the rocks. According to Denny & Gaines (2007), rocky shore has stable and permanent substrates and is occupied by many kinds of organisms, such as mollusks, shrimps, crabs, worms, and benthos. Sampling was carried out in the form of haphazard search along 1 km distance at night using a flashlight and the crabs were hand-collected. Night sampling was selected, since crabs are nocturnal organisms (Poore 2004; Lalli & Parsons 2006). The samples were then brought to the Laboratory of Faculty of Fisheries and Marine Science for further analyses. Species identification was done using morphological and genetic characters. Morphological identification followed Carpenter & Niem (1998) by looking at the general shape of the carapace, the typical shape, and the color. Other observations were done on the leg shape and color, and the claw shape and color. For DNA analysis, sample was preserved in 95% ethanol. Nucleotide characterization of CO1 gene began with DNA genome extraction of the crab's muscle.

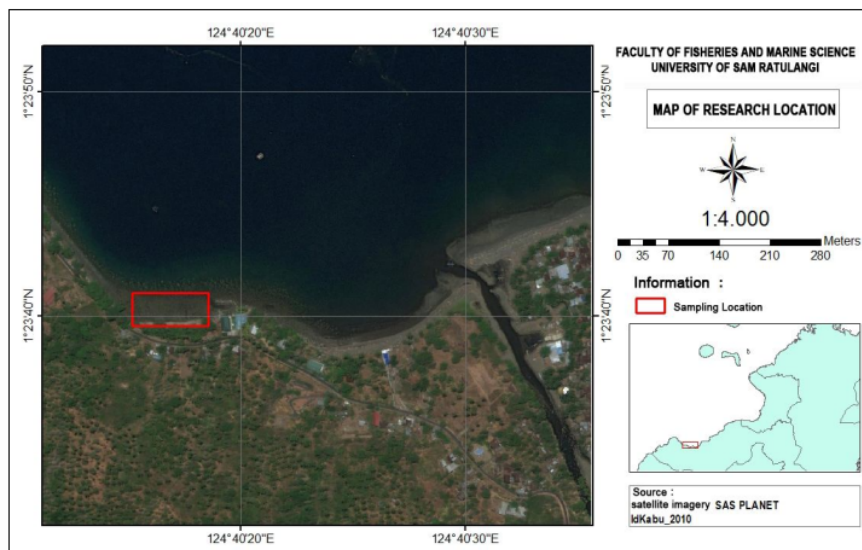


Figure 1. Map of study site.

DNA extraction employed modified procedure of Plant Genomic DNA Mini Kit (100 Preps) (Geneaid). DNA obtained was stored in the freezer. Gene amplification used Cytochrome c Oxidase 1 (CO1) and universal primer LCO1490 (5'-GGT CAA CAA ATC ATA AAG ATA TTG-3') and HC02198 (5'-TAA ACT TCA GGG TGA CCA AAT CA-3') (Folmer et al 1994). Polymerase chain reaction (PCR) was carried out in 35 cycles for denaturation at 95°C (30 sec.), annealing at 50°C (30 sec.), extension at 72°C (30 sec.). The PCR product

was separated using 1% (b/v) agarosa gel electrophoresis (TBE buffer 1x) and observed using UV-Transluminator. The success of PCR DNA product is detected with the presence of single DNA band of 725 bp. Bi-directional sequencing was done by First Base CO (Malaysia) using Big Dye© terminator chemistry (Perkin Elmer). The sequenced nucleotide was analyzed further using Geneious software and the nucleotide sequence was fitted to genetic database situs (NCBIBLAST). The chromatogram obtained was edited using Geneious v5.6 (Drummond et al 2012). The sequences were then compared with GenBank data using BLAST (Basic Local Alignment Search Tools) method (Altschul et al 1997) and BOLDSystems (Ratnasingham & Hebert 2007). The phylogenetic tree was built using Neighbor-Joining Method (Saitou & Nei 1987).

Results and Discussion

Morphological identification. This crab was morphologically identified as lightfoot crab *Grapsus albolineatus* L. Milbert 1812, whose dorsal part of the carapace is circular convex-shape, has blackish green longitudinal line, has greenish white-striped longitudinal line, and has greenish white parallel longitudinal lines (Figure 2). This finding is consistent with Majchacheep (1989). The carapace size ranged from 2 to 4 cm and had orange circle on the middle, in the range of Majchacheep (1989), 2-5 cm width.

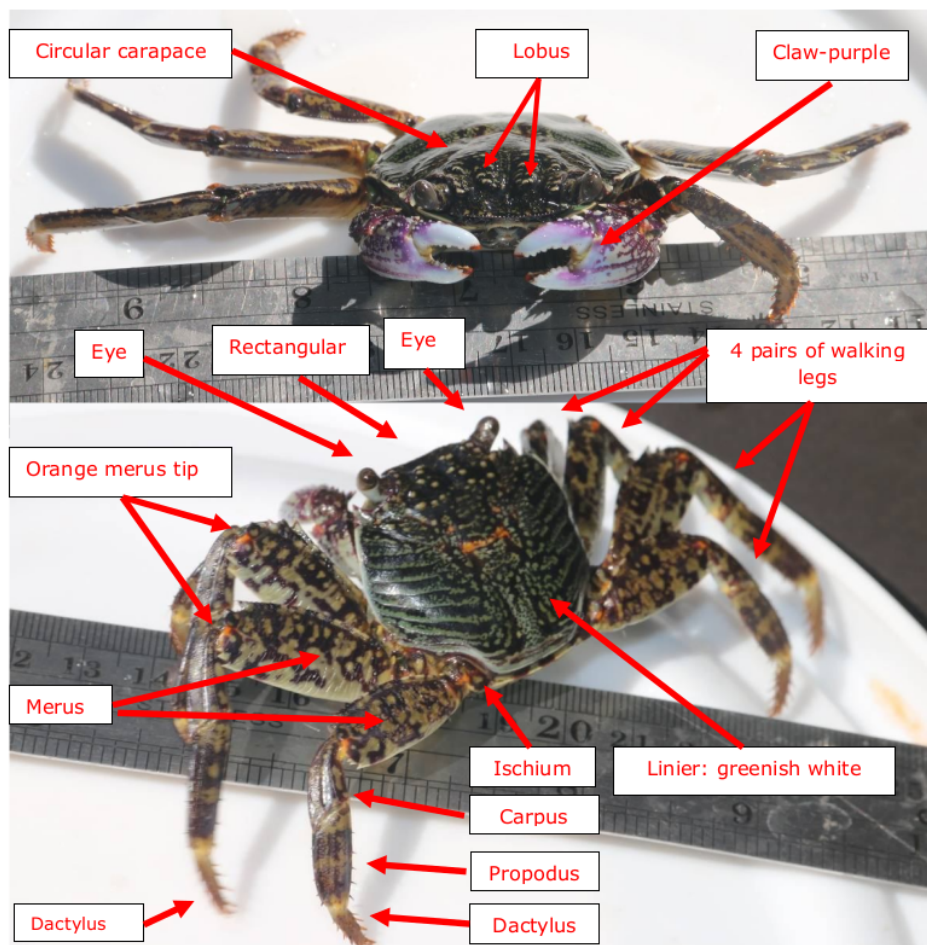


Figure 2. Morphology of lightfoot crab *Grapsus albolineatus* L. Milbert, 1812.

Other characters showed that the anterior part between the eyes occurs 4 blackish green lobes, and a pair of claws is purplish orange. Poupin & Juncker (2010) have characterized that *G. albolineatus* has convex carapace with low tubercles, round lateral margins with length of front equal to length of posterior margin of carapace, and brown-mottled legs with one orange spot at tip of meri. Carpenter & Niem (1998) identified the carapace with green and white transverse markings.

Long foot pairs are equipped with nail, and no swimming leg. The first foot pair is the shortest among feet and has hairs on the parapodia and a pair of small purple claw tips. This crab has also 4 pairs of legs and a pair of claws with purple tip and orange claw base Colin & Arneson (1995). Walking legs have randomly round patterns of greenish orange black or reddish orange black.

According to Denny & Gaines (2007) and Poore (2004), periopod consists of dactylus, propodus, carpus, merus and ischium, in which merus tip occurs an orange circle and the leg section is greenish brown-speckled. Lateral margins rounded or trapezoid with straight front (rectangular) parts; carapace margin with unclear border, looking almost straight or gently convex with one anterior tooth (Carpenter & Niem 1998).

Molecular genetic species identification. Crab sample amplification showed the presence of clear single DNA band on the gel cycle. Sample DNA was observed at the amplicon length position of about 600-750 bp and close to 725 bp using 10.000 bp DNA ladder Primer LCO1490 and HC02198 as comparison. The amplicon length position is in line with the 17f CO1 gene base mostly used as universal marker in animal's species identification based on Folmer et al (1994) and Tang et al (2003). Moreover, DNA marker 13mer for PCR of 710 bp fragment CO1 gene is available for Echinoderm, Mollusk, Annelida, Pogonophora, Arthropoda, Nemertinea, Echiura, Sipuncula, Platyhelminthes, Tardigrada, and Coelenterata (Folmer et al 1994). According to Tang et al (2003), factors affecting the single band and multiple bands on the electrophoretic visual performance come from the condition (quality and quantity) of DNA sample. Crab sample (DP3) was marked with the appearance of thick and clear band on passing path of gel. The PCR product DNA was visualized employing UV-Transiluminator and the success of PCR is detected with the presence of single DNA band of 725 bp (DP3) as shown in Figure 3. According to Folmer et al (1994), factor affecting the presence of thin and thick bands on the electrophoretic visual image comes from the DNA sample condition (quality and quantity).

The PCR product and the two primers used were then sent to the First Base CO (Malaysia) for sequencing. DNA sequence obtained was presented as chromatogram. The nucleotide sequence of 725 bp was then edited to obtain 658 bp as TACATTATATTTTCATCTTTGGTGCCTGAGCGGGAATAGTAGGAACCTCCCTAAGTTTAAATTATCCG AGCAGAATTAAGCCAGCCAGGTAGTCTTATTGGAAATGATCAAATTTACAATGTTGTAGTTACAGC TCACGCCCTTTGTAATGATCTTTTTTATGGTTATACCAATCATAATTGGAGGTTTTGGTAACTGACTT GTACCCCTTATACTAGGAGCTCCAGATATAGCATTCCCCCGTATAAACAACATAAGATTCTGACTT TTACCCCTTCTCTATCCCTTCTTACAAGTAGTATAGTTGAAAGAGGAGTTGGTACCGGATGA ACTGTTTATCCGCCTTAGCAGCTGCTATCGCTCACGCAGGAGCCTCGGTTGATCTTGGTATCTTC TCTTTACATTTAGCTGGTGTGTCATCAATCCTAGGAGCAGTTAATTTTATAACTACAGTTATTAACA TACGATCCTACGGGATAACAATGGATCAGATACCATTTATTTGTCTGAGCTGTATTTATCCCGCTA TCCTACTCTTATCTCTTCCAGTCTAGCAGGGGCTATTACTATACTCTTAACAGATCGTAACTT GAATACTTCTTTCTTTGACCCAGCGGGAGGCGGAGACCCAGTACTTTATCAACATCTC.

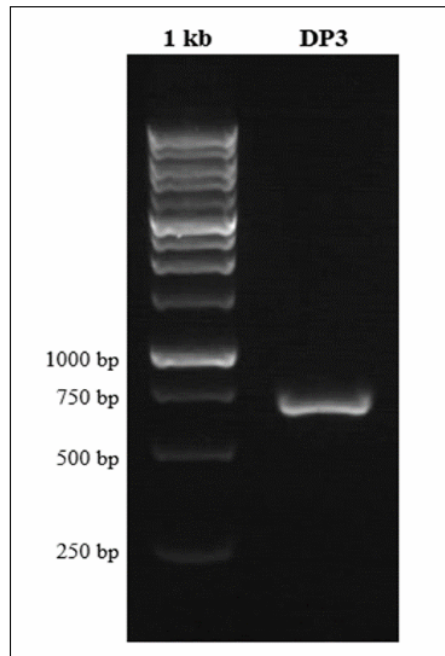


Figure 3. Electrophoresis of CO1 gene amplification of muscle tissue of lightfoot crab muscle (crab DNA/DP3) with Primer LCO1490 and HC02198.

Table 2 demonstrates the shore crabs listed in the genbank data through blast method, the maximum score and the level of identity using CO1 genetic characteristic, in which the crab specimen (DP3) has the highest similarity to the lightfoot crab *Grapsus albolineatus*.

Table 2
Identification of *Grapsus albolineatus* using Blast method

Description	Max. score	Identity (%)	Access no.
<i>Grapsus albolineatus</i> Cytochrome c oxidase subunit 1 (CO1) gene, partial cds mitochondrial gene for mitochondrial product.	1061	99	AF317338.1
<i>Grapsus</i> sp PG-2015 mitochondrial CO1 gene for cytochrome oxidase subunit 1. Partial cds isolate: A.	869	92	LT081187.1
<i>Gegarcoidae natalis</i> mitochondrial CO1 gene for cytochrome oxidase subunit 1 partial cds, isolate: Gen6.	584	83	LC225589.1
<i>Uca neocultrimana</i> mitochondrial CO1 gene for cytochrome oxidase subunit 1, partial cds, isolate: Uvn5.	582	83	AB535421.1
<i>Gegarcoidae lalandii</i> mitochondrial CO1 gene for cytochrome oxidase subunit 1 partial cds, isolate GEL25.	584	83	LC225577.1

Crab sample collected in the coast of Ranowangko village, Minahasa, based on GenBank, was *Grapsus albolineatus*. This result was obtained through comparison with several groups of crustaceans, such as crabs, hermit crab, and shrimp. Based on the phylogenetic tree using Geneious v5.6. software and genbank data (www.ncbi.nlm.nih.gov), after compared with algoritma Neighbor-Joining, this study

found that sample specimen of DP3 had very close kinship with lightfoot crab *Grapsus albolineatus*, with similarity of 99 % (Figure 4).

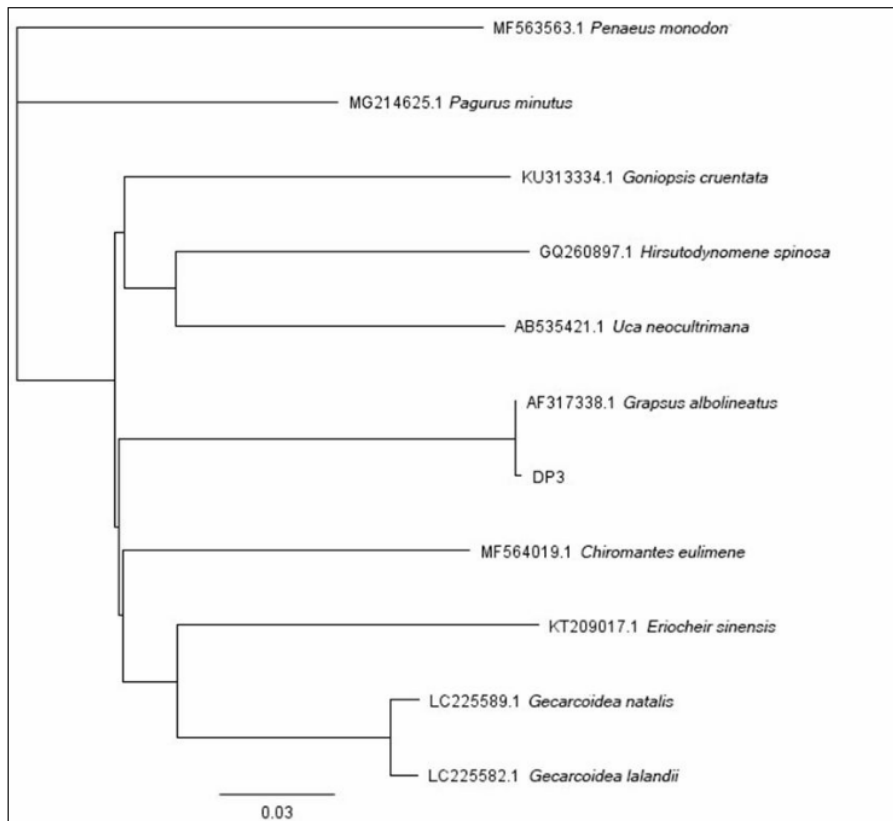


Figure 4. Crab sample (DP3) using Geneious v5.6 software - Algorithm Neighbor - Joining.

Figure 4 demonstrates that all compared NCBI specimens of crabs and shrimp used, but *Grapsus albolineatus*, are in separate clades as the sample specimen meaning that they do not belong to the species of the sample specimen (DP3). The compared crab and shrimp specimens were taken to represent individuals from different habitat types, such as mangrove, land, mud, and sand. This study clearly showed that DP3 was in the same clade as *G. albolineatus* with 99% similarity confirming DP3 sample as *G. albolineatus*.

Conclusions. Crab *Grapsus* sp. is the species abundantly found in Manado Bay coast and lives on the rocky shore. Morphological characters have brought the crab belonging to lightfoot crab *G. albolineatus*. This determination was reconfirmed through DNA analysis using CO1 genetic identity. These data could become information on crab species diversity in Manado Bay, North Sulawesi.

Acknowledgements. We would like to appreciate Mr. Makalalag for crab sampling activities. Our thanks are also addressed to Ms. Diasasthisa and Ms. Seak Werianty for their laboratory help and Mr. Kolondam for handling the molecular works.

References

- Abdullah M. R. A., Paransa D. S. J., Mantiri D. M. H., Angkow E. D., Angmalisang P. A., Mudeng J. D., 2018 [Distribution of carotenoid pigments in *Grapsus* sp. crab using thin layer chromatography method]. *Jurnal Pesisir dan Laut Tropis* 2(1):19-25. [in Indonesian]
- Altschul S. F., Madden T. L., Schaffer A. A., Zhang J., Zhang Z., Miller W., Lipman D. J., 1997 Gapped BLAST and PSI-BLAST: a new generation of protein database search program. *Nucleic Acids Research* 25:3389-3402.
- Bucklin A., Wiebe P. H., Smolenack S. B., Copley N. J., Beaudet J. G., Bonner K. G., Färber-Lorda J., Pierson J. J., 2007 DNA barcodes for species identification of euphausiids (Euphausiacea, Crustacea). *Journal of Plankton Research* 29(6):483-493.
- Carpenter K. E., Niem V. H., 1998 FAO species identification guide for fishery purposes. The living marine resources of Western Central Pacific. Vol. 2: Cephalopods, crustaceans, holothurians and sharks. Rome, FAO, pp. 687-1396.
- Colin P. L., Arneson C., 1995 Tropical Pacific invertebrates. A field guide to the marine invertebrates occurring on tropical Pacific coral reefs, seagrass beds and mangroves. Beverly Hills, California, 296 pp.
- Denny M. W., Gaines S. D., 2007 Encyclopedia of tidepools and rocky shores. University California Press, 734 pp.
- Drummond A. J., Ashton B., Buxton S., Cheung M., Cooper A., Duran C., Field M., Heled J., Kearse M., Markowitz S., Moir M., Stones-Havas S., Sturrock S., Thierer T., Wilson A., 2012 Geneious v5.5.6, <http://www.geneious.com>.
- Folmer O., Black M., Hoeh W., Lutz R., Vrijenhoek R., 1994 DNA primers for amplification of mitochondrial cytochrome C oxidase subunit I from diverse metazoan invertebrates. *Molecular Marine Biology and Biotechnology* 3(5):294-299.
- Fratini S., Cannicci S., Schubart C. D., 2018 Molecular phylogeny of the crab genus *Metopograpsus* H. Milne Edwards, 1853 (Decapoda: Brachyura: Grapsidae) reveals high intraspecific genetic variation and distinct evolutionarily significant units. *Invertebrate Systematics* 32(1):215-223.
- Kolondam B. J., 2014 [DNA barcoding as research tool]. FMIPA, USRAT, Materi Workshop, 65 pp. [in Indonesian]
- Lalli C. M., Parsons T. M., 2006 Biological oceanography: an introduction. Elsevier, Butterworth, Tokyo, 337 pp.
- Majchacheep S., 1989 Marine animal of Thailand. Published By Prae Pittaya, Thailand, 269 pp.
- Maoka T., 2011 Carotenoids in marine animals. *Marine Drugs* 9(2):278-293.
- Poore G. C. B., 2004 Marine decapod crustacea of Southern Australia. A guide to identification. CSIRO Publishing, Australia, 574 pp.
- Poupin J., Juncker M., 2010 A guide to the decapod crustaceans of the South Pacific. Noumea, New Caledonia, 317 pp.
- Purnami A. T., Sunarto, Setyono P., 2010 [Study of benthos community based on diversity and similarity index in Cengklik Dam Boyolali]. *Jurnal Ekosains* 2(2):50-65. [in Indonesian]
- Ratnasingham S., Hebert P. D. N., 2007 BOLD: the barcode of life data system. *Molecular Ecology Notes* 7(3):355-364.
- Reed R., Holmes D., Weyers J., Jones A., 2013 Practical skills in biomolecular sciences. Addison Wesley Longman, 571 pp.
- Saitou N., Nei M., 1987 The neighbor-joining method: a new method for reconstructing phylogenetic trees. *Molecular Biology and Evolution* 4(4):406-425.
- Tang B., Zhou K., Song D., Yang G., Dai A., 2003 Molecular systematics of the Asian mitten crabs, genus *Eriocheir* (Crustacea: Brachyura). *Molecular Phylogenetics and Evolution* 29(2):309-316.
- Walker J. M., Rapley R., 2009 Molecular biology and biotechnology. 5th edition, The Royal Society of Chemistry, Cambridge, 604 pp.

Wilson K., Walker J., 2010 Principles and techniques of biochemistry and molecular biology. Cambridge University Press, 761 pp.

Received: 06 March 2019. Accepted: 19 May 2019. Published online: 22 June 2019.

Authors:

Darus Saadah J. Paransa, Faculty of Fisheries and Marine Science, Sam Ratulangi University, Jl. Kampus Bahu, Manado-95115, North Sulawesi, Indonesia. Email: darusparansa@unsrat.ac.id.

Desy M H. Mantiri, Faculty of Fisheries and Marine Science, Sam Ratulangi University, Jl. Kampus Bahu, Manado-95115, North Sulawesi, Indonesia. Email: dhm_mantiri@unsrat.ac.id

Cyska Lumenta, Faculty of Fisheries and Marine Science, Sam Ratulangi University, Jl. Kampus Bahu, Manado-95115, North Sulawesi, Indonesia. Email: cyskaliu@gmail.com

Medy Ompi, Faculty of Fisheries and Marine Science, Sam Ratulangi University, Jl. Kampus Bahu, Manado-95115, North Sulawesi, Indonesia. Email: ompimedy@unsrat-ac.id.

Silvester B. Pratasik, Faculty of Fisheries and Marine Science, Sam Ratulangi University, Jl. Kampus Bahu, Manado-95115, North Sulawesi, Indonesia. Email: spjong07@yahoo.com

This is an open-access article distributed under the terms of the Creative Commons Attribution License, which permits unrestricted use, distribution and reproduction in any medium, provided the original author and source are credited.

How to cite this article:

Paransa D. S. J., Mantiri D. M. H., Lumenta C., Ompi M., Pratasik S. B., 2019 Morphological and genetic characteristics of lightfoot crab *Grapsus albolineatus* Latreille in Milbert, 1812 from Manado Bay, North Sulawesi. *ACL Bioflux* 12(3):804-811.

Morphological and genetic characteristics of lightfoot crab *Grapsus albolineatus* Latreille in Milbert, 1812 from Manado Bay, North Sulawesi

ORIGINALITY REPORT

14%

SIMILARITY INDEX

11%

INTERNET SOURCES

11%

PUBLICATIONS

10%

STUDENT PAPERS

PRIMARY SOURCES

- 1** Submitted to Universitas Diponegoro
Student Paper 4%
- 2** Submitted to Texas A&M University, Texarkana
Student Paper 2%
- 3** hdl.handle.net
Internet Source 1%
- 4** Anisa ET Silaa, Darus SJ Paransa, Anton P Rumengan, Kurniati Kemer, Natalie DC Rumampuk, Hengky Manoppo. "PEMISAHAN JENIS PIGMEN KAROTENOID DARI KEPITING *Grapsus* sp JANTAN MENGGUNAKAN METODE KROMATOGRAFI KOLOM", JURNAL PESISIR DAN LAUT TROPIS, 2019
Publication 1%
- 5** Joice R.T.S.L Rimper, Silvana D Harikedua, Veibe Warouw. "The size variation of rotifer *Brachionus rotundiformis* cultivated with

different feed at 40 ppt salinity", AQUATIC SCIENCE & MANAGEMENT, 2019

Publication

6	www.longdom.org Internet Source	1 %
7	Submitted to Chapman University Student Paper	1 %
8	Submitted to University of Newcastle upon Tyne Student Paper	1 %
9	it.wikipedia.org Internet Source	<1 %
10	research.nhm.org Internet Source	<1 %
11	NICOLE L. GUNTER, JOHN M. LEAVENGOOD, JUSTIN S. BARTLETT, ERIC G. CHAPMAN, STEPHEN L. CAMERON. " A molecular phylogeny of the checkered beetles and a description of piclininae a new subfamily (oleoptera: leroidea: leridae) ", Systematic Entomology, 2013 Publication	<1 %
12	Silvester Benny Pratasik, Ferdinand Frans Tilaar, Meiske Sofie Salaki. "Estimation of first maturity size of dolphinfish Coryphaena hippurus Linnaeus in the Molucca Sea, North	<1 %

Sulawesi, Indonesia", Fisheries and Aquatic Sciences, 2022

Publication

13

www.science.gov

Internet Source

<1 %

14

Dias Diasasthisa, Darus J Paransa, Desy MH Mantiri, Antonius Rumengan, Veibe Warouw, Meiske Salaki. "ISOLASI PIGMEN KAROTENOID DARI KEPITING Grapsus sp. (CAROTENOID PIGMENTS ISOLATION FROM CRABS Grapsus sp.)", JURNAL PESISIR DAN LAUT TROPIS, 2019

Publication

<1 %

15

Peter K L Ng, Peter J F Davie. "A new family and superfamily for the southern giant crab of Australia, Pseudocarcinus gigas (Lamarck, 1818) (Decapoda: Brachyura)", Journal of Crustacean Biology, 2020

Publication

<1 %

16

cyberleninka.org

Internet Source

<1 %

17

"Treatise on Zoology - Anatomy, Taxonomy, Biology. The Crustacea, Volume 9 Part C (2 vols)", Brill, 2016

Publication

<1 %

Exclude bibliography On