

Composition and diversity of bacteria from giant Asian honeybee *Apis dorsata* gut

by Nurdjannah Jane Niode 4

Submission date: 29-May-2023 02:02PM (UTC+0700)

Submission ID: 2104385727

File name: Jurnal_Q3_author.pdf (781.48K)

Word count: 5226

Character count: 28113

Composition and diversity of bacteria from giant Asian honeybee *Apis dorsata* gut

NURDJANNAH JANE NIODE^{1,2}, ARYANI ADJI^{1,2}, JIMMY RIMBING¹, MAX TULUNG¹,
TRINA EKAWATI TALLEI^{3,*}

¹Entomology Program, Graduate School, Universitas Sam Ratulangi, Jl. Kampus Unsrat, Manado 95115, North Sulawesi, Indonesia

²Department of Dermatology and Venereology, Faculty of Medicine, Universitas Sam Ratulangi, RD Kandou Hospital, Jl. Raya Tanawangko No. 56, Manado 95163, North Sulawesi, Indonesia.

³Department of Biology, Faculty of Mathematics and Natural Sciences, Universitas Sam Ratulangi, Jl. Kampus Unsrat, Manado 95115, North Sulawesi, Indonesia. Tel.: +62-811-4314880, *email: trina_tallei@unsrat.ac.id,

Manuscript received: 3 November 2020. Revision accepted: 20 January 2021.

Abstract. Niode NJ, Adji A, Rimbing J, Tulung M, Tallei TE. 2021. Composition and diversity of bacteria from giant Asian honeybee *Apis dorsata* gut. *Biodiversitas* 22: 906-912. As a social insect, honeybee possesses a unique gut bacteria community. Therefore, we need to understand the composition and diversity of bacteria in *Apis dorsata* gut, the largest honeybee species that live in the forest, especially in Southeast Asia. The present study aimed to investigate the gut bacteria of *A. dorsata* using a metabarcoding approach. The DNA barcode region used in this approach was the V3-V4 region of 16S rRNA. Honeybees were caught in a forest area located in Tareran, South Minahasa, North Sulawesi, Indonesia. There were 11 phyla identified from the gut of *A. dorsata*. The most abundant phyla were Firmicutes (95.8%), Proteobacteria (3.7%), and Actinobacteria (0.4%). The class Bacilli was responsible for 94.5% of the total bacterial population, the dominant family was Bacillaceae (87.2%), and the dominant genus was *Bacillus* (87%). Simpson (1-D) 0.24 and Shannon diversity index 0.98 indicated that the diversity of the genera was low. A nonsignificant number of species belong to the lactic acid bacteria was also detected, which may have certain benefits that need to be investigated further.

Keywords: 16S rRNA, *Apis dorsata*, bacteria, gut, honeybee, V3-V4 region

INTRODUCTION

Pollination is essential for every plant's survival, including vegetables and fruits. The honeybee is one of the insects that play a significant role in pollination. Besides acting as a pollinator, honeybees also produce honey that contains many benefits including rich in energy and nutritional properties. There are nine honeybee species known to this day, including *Apis dorsata* (Fabricius 1793). Based on its body size, this insect is called the giant honeybee. Apart from their aggressive behavior, this honeybee could make enormous nests with a single comb that hangs from tree branches (Weihmann et al. 2014). The honeybee inhabits Southeast Asia's forests and has never been reported to be seen in urban areas. Out of three, there are two subspecies of *A. dorsata* in Indonesia: *A. dorsata dorsata* and *A. d. binghami*. According to early studies, *A. d. binghami* was found only on the island of Sulawesi and its surroundings (Hadisoesilo 2001; Lo et al. 2010). Meanwhile, other subspecies, *A. d. breviligula*, was found only in the Philippines (Hadisoesilo 2001).

Honeybees are social insects. Their guts possess unique gut microbiota community, caused among others by the high number of individuals within a colony, the food sharing, and the close relationship between colony members. Therefore, these microbiomes are easily propagated from one another among colony members (Engel et al. 2016). Some bacterial species associated with honeybees, are clearly pathogenic, but most species have

never been associated with any disease symptoms and their impact on the honeybee is largely unknown (Lamei 2018). Hence, studying the interaction between the microbiome in their gut with its host is very interesting. In previous research, the bacterial community in the midgut of *A. dorsata* has been studied insect development stages (Saraithong et al. 2017). It was reported that Proteobacteria and Firmicutes dominated the midgut, which consisted of four classes: Alphaproteobacteria, Betaproteobacteria, Gammaproteobacteria, and Bacilli. However, the study was not based on a metagenomic approach. So, it is expected that it does not represent the true nature of the microbiome diversity in the gut of *A. dorsata*. By conducting cultivation, Kwong et al. (2018) reported that they found *Apibacter* spp. in the gut of *A. dorsata*. The bacterial species belongs to the phylum Bacteroidetes, reported as endemic to *A. dorsata* and *A. cerana*. Furthermore, it is also described that each honeybee species has a different *Apibacter* strain symbiont, thus this bacterium is considered to have adapted to its host (Kwong et al. 2017).

A direct method without microbial culture was best to apply to study the gut bacterial diversity and community structure of *A. dorsata*. Not all of these bacteria could be cultured, as reported by several previous researchers (Tajabadi et al. 2011; Evans and Armstrong 2006). Lombogia et al. (2020) has reported that the dominant bacteria in the gut of *A. nigrocincta* found in densely populated urban areas were Proteobacteria (58%), Firmicutes (29%), and Actinobacteria (8%). To our

knowledge, based on the analysis using metagenomics approach, the bacterial composition and diversity in *A. dorsata* gut have not previously been reported. Thus, this study was conducted to further established the topic.

MATERIALS AND METHODS

Sampling location

One honeybee worker of *A. dorsata* was captured in the forest near Rumoong Atas Village, Taranan Sub-district, South Minahasa District (1.2241455, 124.7356518). The identification on result of the honeybee based on partial COI gene sequence has been submitted to GenBank (<https://www.ncbi.nlm.nih.gov/nucleotide/MT233417>).

Sample preparation

Sample preparation was carried out accordingly with the protocol performed by Lombogia et al. (2020). The surface of the bees was sterilized by immersing the entire body of the bee into 1.0% hypochlorite solution for 10 minutes, then immersed into 70% ethanol for 2 minutes. After that, the bee's body was rinsed using sterile distilled water three times, then dried using clean tissue paper. The bee's body was dissected under a sterile condition using a sterile scalpel. The gut was put into a sterile Eppendorf tube.

gDNA extraction and metabarcoding process

The honeybee gut was homogenized using FastPrep-24 Instrument at 4 m/s for 25 seconds, then extracted using ZymoBionics DNA Mini Kit (Zymo Research) to obtain bacterial gDNA. Furthermore, NanoDrop 1000 (Thermo Scientific, Wilmington, DE, USA) was used to analyze the gDNA to ensure that it was sufficient for the next stage. The V3-V4 hypervariable regions were selected from the 16S rRNA gene for this metabarcoding process. The area was amplified using MyTaq™ HS Red Mix (Bioline, BIO-25044) in Agilent SureCycler 8800 Thermal Cycler. The polymerase chain reaction (PCR) conditions were run as follow: the denaturation began at 95°C for 3 min, then followed by 35 cycles of denaturation at 95°C for 15 sec, annealing at 52°C for 30 sec, extension at 72°C for 45 sec, and a final extension to complete the process at 72°C for 3 min.

16S rRNA library preparation

The next stage of the metabarcoding process was preparing the 16S rRNA amplicon library using the Illumina two-step PCR protocol. Firstly, the V3-V4 regions were generated using Nextera-style tag sequences (overhang sequences) with the following sequences: forward overhang P5-tag: 5'TCGTCGGCAGCGTCA GATGTGTATAAGAGACAG- [locus-specific sequence] and reverse overhang P7-tag: 5'GTCTCGTGAGGACCGG - [locus-specific sequence]. Then, the process was continued using specific Illumina Nextera XT dual indices (Nextera XT i7 index and Nextera XT i5 index) with the following sequences: P5-PCR primary index: 5'AATGATACGGCACCACCGAGATCTACAC [i5]

TCGTCGGCAGCGTC and P7-PCR primary index: 5'CAAGCAGAAG i7] GTCTCGTGGG CCGG. Amplicon sequencing was conducted using Illumina paired-end platform to generate 250 bp paired-end raw reads (Raw PE), merged, and pretreated to obtain clean tags. In order to get effective tags, which was for subsequent analysis, the chimeric sequences in clean tags were removed using UCHIME.

Bioinformatics analysis

The Effective Tags with the identity of 97% were clustered and identified to obtain operational taxonomic units (OTUs), which were useful to study the microbial community composition in each sample. Necessary information of different samples such as effective tags, low-frequency tags, and tags annotation data was collected while constructing OTUs.

Sequencing data processing

The sequenced data processing was carried out accordingly following the previous procedure conducted by Kusumawaty et al. (2020) and Lombogia et al. (2020). The primary sequence was separated from the 16S rRNA code region on paired-end reads. This area was then merged using FLASH V1.2.7 (<http://ccb.jhu.edu/software/FLASH/>) to generate raw tags, which then filtered to obtain clean tags according to the Qiime (V1.7.0). The gold database was used as a reference for clean tags comparison. Chimeric sequences in clean tags were detected using the UCHIME algorithm before removal to finally obtain the effective tags.

OTU clustering and taxonomic annotation

This process was carried out using Uparse Software v7.0.1001. Sequences were clustered to the same OTUs if the similarity index reached $\geq 97\%$. Annotations were then obtained based on the screening of for each OTU. Species annotations for each representative sequence were obtained from the SSU rRNA database (SILVA Database (<http://www.arb-silva.de/>) using Mothur software, so that species annotations were obtained for each taxonomic rank (Threshold: 0.8 ~ 1) commenced from kingdom till species. Phylogenetic relationships of all OTUs were constructed using MUSCLE v3.8.31.

Microbial community analysis

Relative abundance was obtained from taxonomic annotations. This could be illustrated by making pie charts for phylum and genus/species, so the most abundant taxa and their proportion in the sample classification level could be obtained visually.

Alpha diversity analysis

QIIME (Version 1.7.0) software was used to calculate the alpha bacterial diversity obtained from the *A. dorsata* gut, which included Simpson (1-D) and Shannon-Wiener (H') indices (Fatimawali et al. 2020).

Construction of genus evolutionary tree

The tree was constructed by using NJ methods based on 100 top genera and provided by v10 or based on amplicon sequences (region V3-V4). The sequence alignment was conducted using PyNAST software (Version 1.2) and compared with the "core set" dataset in the GreenGene database.

RESULTS AND DISCUSSION

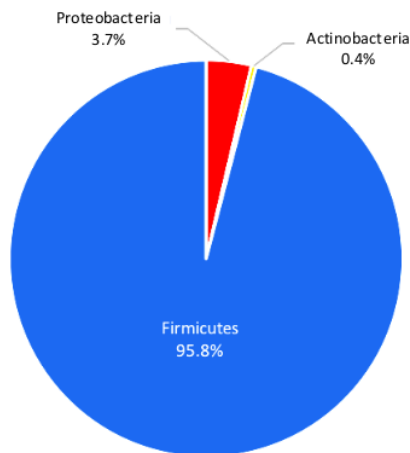
The bacterial community that inhabits the insect digestive system serves a significant function for its host's health. Therefore, a slight disturbance in the balance of the bacterial community will affect the insect's health and survival (Cariveau et al. 2014). As one of the social insects, honeybee has a microbiome community that is mostly limited to the gut. It is mainly transmitted through social interactions and helps metabolize dietary carbohydrates and protect against pathogens (Raymann and Moran 2018). This microbiota is very dynamic and adaptive because it is influenced by several factors, such as nutrition, the hive environment, social interactions, and the age of the honeybees, while the composition follows seasonal patterns (Lamei 2018).

The presence of symbiont bacteria communities in the gut of *A. dorsata* was analyzed using the metabarcoding approach. The DNA barcode region used in this approach was V3-V4 which is a hypervariable region of 16S rRNA. The result of this metabarcoding shows a total of 11 phyla that can be identified from the gut of *A. dorsata* (Table 1). The most abundant phyla are originated from Firmicutes (95.8%), followed by Proteobacteria (3.7%), and Actinobacteria (0.4%), as well as other phyla with very insignificant numbers (Figure 1). This study has generated substantially different results from those found by

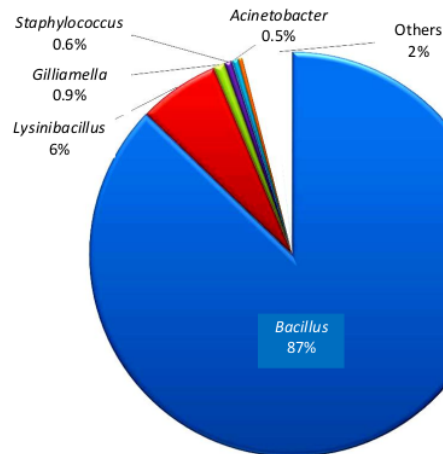
Lombogia et al. (2020) in the gut of *A. nigrocincta*, in which the dominant phyla are Proteobacteria (58%), Firmicutes (29%), Actinobacteria (8%), and Bacteroidetes (4%). A similar result has also been listed by Yun et al. (2018), which the dominant phyla are Proteobacteria (62.1%) and Firmicutes (20.7%). Other researchers have also agreed that the dominating phyla in the honeybee gut consist of Firmicutes, Actinobacteria, and Proteobacteria (Jain et al. 2018; Martinson et al. 2011; and Moran et al. 2012). The relative and absolute abundance of bee communities and their interactions with each other will determine the overall contribution of the microbiome to the health of its hosts (Engel et al. 2016).

Simpson's (1-D) value of 0.23 indicates low phylum diversity in the gut of *A. dorsata*, and there is a dominating taxon in the community (Dominance index: 0.77). Several studies have shown that these results vary, depending on the honeybee caste itself, whether foraging bees or queen (Lombogia et al. 2020).

The class Bacilli is responsible for 94.5% of the total bacterial population, followed by Gammaproteobacteria (1.8%), Alphaproteobacteria (1.7%), and Clostridia (1.1%). The dominant family is Bacillaceae (87.2%), later Planococcaceae (6.5%). Other families are also detected with insignificant numbers, namely Rhizobiaceae (1.6%), Orbaceae (0.9%), Staphylococcaceae (0.6%), Lachnospiraceae 0.5%), and Moraxellaceae (0.5%). The dominant genus is *Bacillus* (87%) and several genera are detected in small numbers, such as *Lysinibacillus* (6%), *Gilliamella* (0.9%), *Staphylococcus* (0.6%), *Acinetobacter* (0.5%), *Bifidobacterium* (0.4%), *Faecalibacterium* (0.2%), and *Blautia* (0.2%) (Figure 2). This result is very different from the bacteria in the gut of *A. nigrocincta* found in densely populated areas in the city of Manado (Lombogia et al., 2020). *Bifidobacterium* has been found with a percentage of 8% in *A. nigrocincta* (Lombogia et al. 2020) and 3.34% in *A. mellifera* (Wang et al. 2020).



17
Figure 1. Relative abundance of phyla in the gut of *Apis dorsata* by using metabarcoding approach



47
Figure 2. Relative abundance of genera in the gut of *Apis dorsata*

17

Table 1. Relative abundant of phyla in gut of *Apis dorsata dorsata*

Phylum	Relative abundance
Firmicutes	0.95766
Proteobacteria	0.03652
Actinobacteria	0.00438
Bacteroidetes	0.00073
Chloroflexi	0.00026
Acidobacteria	0.00021
Gemmatimonadetes	0.00009
Planctomycetes	0.00003
GAL15	0.00003
Cyanobacteria	0.00002
Verrucomicrobia	0.00001
Others	0.00006

The abundance of *Bacillus* in the gut of *A. dorsata* is presumably related to the flowering season in the area where the specimen is found. The sampling area was located at an altitude of about 600 meters above sea level. The vegetation was dominated by *Arenga pinnata* (L.), *Piper aduncum* (L.), *Syzygium aromaticum*, and bushes. Wang et al. (2015) have reported that *Bacillus* dominated the gut of *A. mellifera* during the flowering season of the rape plant (Brassicaceae). They have also proposed a hypothesis that the presence and abundance of microbes in the gut of bees were closely related to the availability of feed around them, in which these microbes help process the feed. Functionally, too, these microbes secreted enzymes involved in the metabolization of bee feed. In their research, Wu et al. (2014) have also found abundant amount of *Bacillus* in Japanese honeybee's gut. Likewise, the European honeybee, *A. mellifera*, has been reported to contain many *Bacillus* species in their guts (Evans and Armstrong 2005). These results may have implied that members of the genus *Bacillus* have existed in the gut of *Apis* spp. (Wu et al. 2014). Most studies have found that *Bacillus* provides benefits for honeybees in pollen fermentation and food protection and disease prevention (Wu 2014). Research by Khan et al. (2020) has shown that *Bacillus* isolated from the intestine of *A. mellifera* can inhibit chalkbrood pathogens. Through gluconic acid production, *Bacillus senegalensis* can control the mushroom chalkbrood *Ascosphaera apis*. Research by Sabaté et al. (2009) has found that *B. subtilis* isolated from honeybees' gut can inhibit pathogens *Paenobacillus larvae* and *A. apis*. This is because the G2III strain of *B. subtilis* produces surfactin (bacterial cyclic lipopeptide), a very strong surfactant, which is usually used as an antibiotic. A similar case was also found in *B. licheniformis* isolated from *A. m. jemenitica*. This bacterium reduced the mortality of bee larvae infected with *P. larvae* (Al-Ghamdi et al. 2018). Galimat et al. (2019) found many *Bacillus* species isolated from the stingless bee (*Heterotrigona* sp.) had many activities such as proteolytic, lytic, and cellulolytic. Also, one of the strains, *B. amyloliquefaciens* PD9, showed broad-spectrum antimicrobial activity. Kacaniova et al. (2019) have reported *B. cereus*, *B. megatherium*, *B. olerenius*, and *B. thuringiensis* isolated from the gut of *A. mellifera* had

antimicrobial activity against *P. larvae*. *Bacillus* is also a probiotic group member (Niode et al. 2020). Zulkhairi Amin et al. (2019) have suggested that the *Bacillus* strain isolated from the stingless bee has probiotic potential. The probiotic *Bacillus* can eliminate methicillin-resistant *Staphylococcus aureus* (Piewngam et al. 2018), while *B. cereus* isolated from the gut of *A. nigrocincta* can inhibit *S. aureus* (Lombogia et al. 2020).

Blot et al. (2019) reported that *Lysinibacillus* was also found in the gut of *A. mellifera*. In the gut of *A. dorsata*, the species found was *L. sphaericus*. This bacterium, formerly known as *B. sphaericus*, is usually found in the soil and has a larvicidal effect on mosquitoes (*Culex* and *Anopheles*) and is therefore suggested to be a pathogenic insect (Berry 2012). In addition, this species is reported to have antifungal activity (Naureen et al. 2017). They serve as a nutritional ingredient that increases the ability to fix nitrogen, nitrify, and solubilize phosphorus. It produces bacteriocins against foodborne bacterial and fungal pathogens (Ahmad et al. 2014). Thus, it is thought that the presence of *L. sphaericus* in a sufficiently large amount does have an important role for *A. dorsata*, which is to digest nutrients and protect the host's gut.

Gilliamella apicola is taken 1% of the bacterial community. According to Zheng et al. (2016), this species is one of the core bacterial species in the gut of the *Apis* spp. and plays a role in carbohydrate metabolism. Genomic analysis has identified various genes in the *G. apicola* strain, which involve sugar absorption and fermentation (Alatawy et al. 2020). *G. apicola* strain contains many sugar transporters and sugar utilization pathways (Moran 2015). Engel et al. (2012) found an abundance of genes that process carbohydrates, especially in the *G. apicola* strain isolated from the gut of worker bee communities. In some *G. apicola* strains, pectate lyase that digests pectin in the pollen cell walls was present, while others were absent. This suggests that certain strains in individual worker bees or in colonies can affect bees' nutritional ecology or may function to neutralize food toxins (Moran 2015).

The relative abundance of the genus *Bacillus* and *Lysinibacillus* can also be seen in the phylogenetic diagram in Figure 3. Based on this diagram, it is confirmed that there are a considerable number of genera/species. With 194 genera/species observed, Simpson (1-D) 0.24 indicates that the diversity of genus/species in the gut is low, and with a Dominance index value of 0.76, there is a genus/species that dominates the community. The Shannon diversity index obtained was 0.98, indicating that the diversity of the genus is low. This is because although the richness of the taxa is relatively high, the evenness is low, and therefore the diversity of genus/species is low. Kirsten et al. (2020) have suggested that the high level of diversity of the microbiota in the gut of *A. mellifera* can facilitate foraging on a wider variety of pollen sources to adapt more quickly to environmental condition dynamics. However, this high diversity can lead to increased gut microbiota competition. On the other hand, the low gut microbiota diversity of bees may contain various strains adapted to more favorable local conditions.

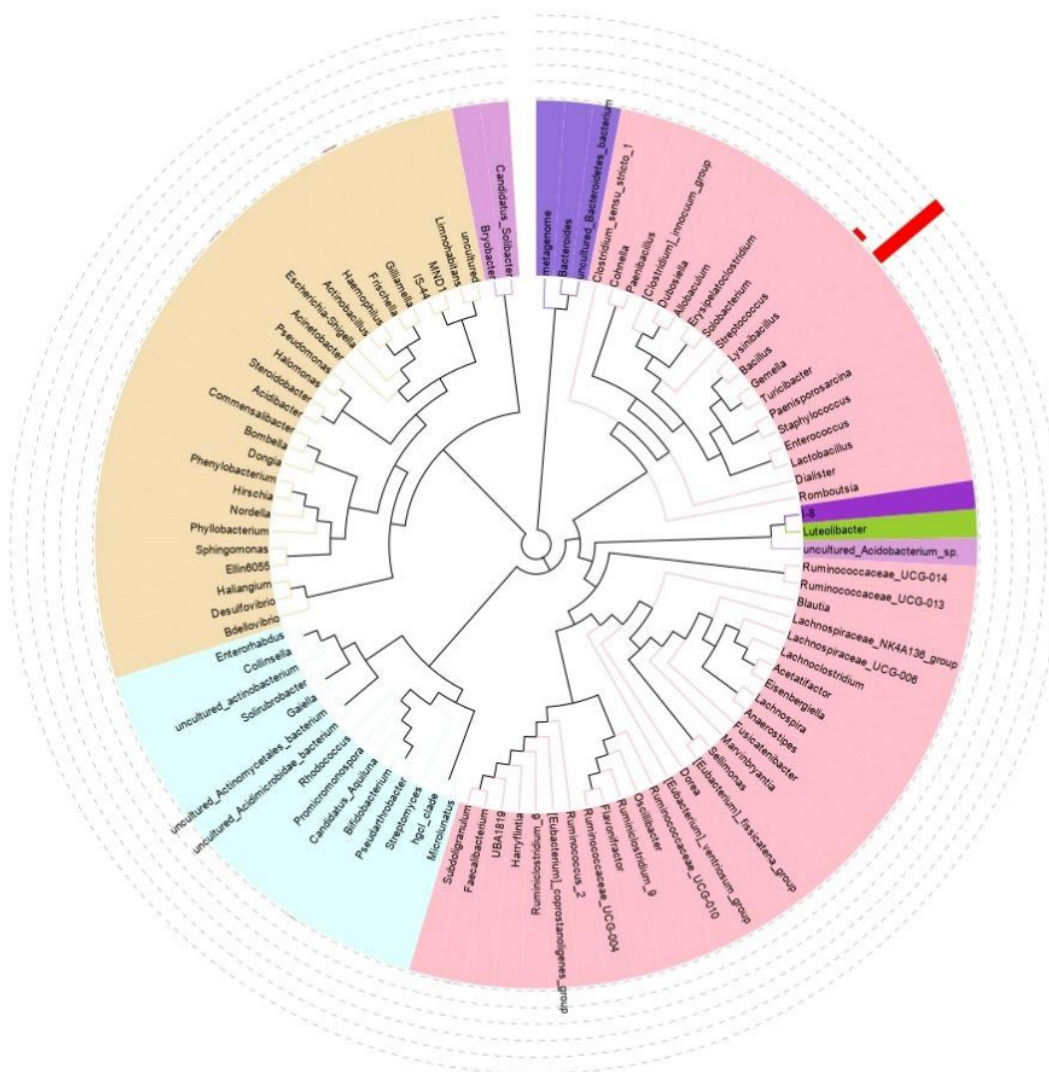


Figure 3 Genus evolutionary tree by using NJ methods. Red bars indicate the relative abundance of the taxa. Different colors of the branches represent different phyla. Relative abundance of each genus in each group is displayed outside the circle

Faecalibacterium and *Bifidobacterium* are 2 of 10 genera abundant in the gut of *Apis mellifera* (Wang et al. 2020). *Faecalibacterium prausnitzii*, which is the only species in the genus *Faecalibacterium*, is relatively abundant in the healthy human gut (Laursen et al. 2017) and they help in balancing the immune system (Miquel et al. 2013). This species can metabolize fiber which helps in energy conservation and anti-inflammatory (Hiippala et al. 2018).

Bifidobacterium can produce pectin-degrading enzymes, glycoside hydrolase, and Polysaccharide lyase

which can degrade complex carbohydrates (Zheng et al. 2019; Wang et al. 2020). The striking differences in the composition of the bacteria inhabiting the *A. dorsata* gut compared to other honey bees can be attributed to the substrate needed by these bees. This is also closely related to the ecological niche in which these bees live. Hence the structure, composition, and abundance of bacteria in the gut are strongly influenced by food sources.

In conclusion, this study shows the bacterial community's composition and diversity in *A. dorsata* gut using the V3-V4 hypervariable region of 16S rRNA gene

marker. Firmicutes dominated most of the phyla, while Bacilli dominated the bacterial class. Relative abundance was found in the genera *Bacillus* and *Lysinibacillus*. Simpson (1-D) 0.24 and Shannon diversity index 0.98 indicated low genus diversity. This study can provide data on the microbiome's diversity in the gut of *A. dorsata*. However, further research will be required to determine the specific relationship between the gut microbiome of *A. dorsata*, its host, and its ecological niche.

ACKNOWLEDGEMENTS

This research is part of the Doctoral Dissertation Research Grant funded by the Indonesian Ministry of Research and Technology/National Research and Innovation Agency for Fiscal Year 2020 through the Directorate of Research and Community Service.

REFERENCES

- Aguirre-Monroy AM, Santana-Martínez JC, Dussán J. 2019. *Lysinibacillus sphaericus* as a nutrient enhancer during fire-impacted soil replantation. *Appl Environ Soil Sci* 2019: 3075153. DOI: 10.1155/2019/3075153.
- Ahmad V, Iqbal AM, Haseeb M, Khan MS. 2014. Antimicrobial potential of bacteriocin producing *Lysinibacillus jx416856* against foodborne bacterial and fungal pathogens, isolated from fruits and vegetable waste. *Anaerob* (27): 87-95.
- Alatawy M, Al-Attas SG, Assagaf AI, Al-Shehri A, Alghamdi KM, Ahmed Bahieldin A. 2020. Gut microbial communities of adult honey bee workers (*Apis mellifera*). *Biosci Biotechnol Res Asia* 17 (2): 353-362.
- Al-Ghamdi A, Ali Khan K, Javed AM, Almasaudi S, Al-Kahtani S. 2018. Effect of gut bacterial isolates from *Apis mellifera jemenitica* on *Paenibacillus larvae* infected bee larvae. *Saudi J Biol Sci* 25: 383-387.
- Berry C. 2012. The bacterium, *Lysinibacillus sphaericus*, as an insect pathogen. *J Invertebr Pathol* 109 (1): 1-10.
- Blot N, Veillat L, Rouze R, Delatte H. 2019. Glyphosate, but not its metabolite AMPA, alters the honeybee gut microbiota. *PLoS ONE* 14 (4): e0215466. DOI: 10.1371/journal.pone.0215466.
- Cariaveau DP, Elijah PJ, Koch H, Winfree R, Moran NA. 2014. Variation in gut microbial communities and its association with pathogen infection in wild bumble bees (*Bombus*). *ISME J* 8: 2369-2379.
- Engel P, Kwong WK, McFrederick Q, Anderson KE, Barribeau SM, Chandler JA, Cornman RS, Dainat J, de Miranda JR, Doublet V, Emery O, Evans JD, Farinelli L, Flenniken ML, Granberg F, Grasis JA, Gauthier L, Hayer J, Koch H, Kocher S, Martinson VG, Moran N, Munoz-Torres M, Newton I, Paxton RJ, Powell E, Sadd BM, Schmid-Hempel P, Schmid-Hempel R, Song SJ, Schwarz RS, vanEngelsdorp D, Dainat B. 2016. The bee microbiome: impact on bee health and model for evolution and ecology of host-microbe interactions. *mBio* 7 (2): e02164-15. DOI: 10.1128/mBio.02164-15.
- Engel P, Martinson VG, Moran NA. 2012. Functional diversity within the simple gut microbiota of the honey bee. *Proc Natl Acad Sci USA* 109: 11002-11007.
- Evans JD, Armstrong TN. 2005. Inhibition of the American foulbrood bacterium, *Paenibacillus larvae*, by bacteria isolated from honey bees. *J Apic Res* 44: 168-171.
- Evans JD, Armstrong TN. 2006. Antagonistic interactions between honey bee bacterial symbionts and implications for disease. *BMC Ecol* 6: 4. DOI: 10.1186/1472-6785-6-4.
- Fatimawali, Kepel BJ, Gani MA, Tallei TE. 2020. Comparison of bacterial community structure and diversity in traditional gold mining waste disposal site and rice field by using a metabarcoding approach. *Int J Microbiol* 2020: 1858732. DOI: 10.1155/2020/1858732.
- Hadiosesilo S. 2001. The diversity of indigenous honey bee species of Indonesia. *Biodiversitas* 2 (1): 123-128. [Indonesian]
- Hiippala K, Jouhten H, Ronkainen A, Hartikainen A, Kainulainen V, Jalanka J, Satokari R. 2018. The potential of gut commensals in reinforcing intestinal barrier function and alleviating inflammation. *Nutrients* 10 (8): 988.
- Jain A, Li XH, Chen WN. 2018. Similarities and differences in gut microbiome composition correlate with dietary patterns of Indian and Chinese adults. *AMB Express* 8 (1): 104. DOI: 10.1186/s13568-018-0632-1.
- Kačaniová M, Gasper J, Terentjeva M. 2019. Antagonistic effect of gut microbiota of honeybee (*Apis mellifera*) against causative agent of American foulbrood *Paenibacillus larvae*. *J Microbiol Biotechnol Food Sci* 9: 478-481.
- Khan S, Somerville D, Frese M, Nayudu M. 2020. Environmental gut bacteria in European honey bees (*Apis mellifera*) from Australia and their relationship to the chalkbrood disease. *PLoS ONE* 15 (8): e0238252. DOI: 10.1371/journal.pone.0238252.
- Kirsten ME, Shota S, Ryo M, Philipp E. 2020. Vast differences in strain-level diversity in the gut microbiota of two closely related honey bee species. *Curr Biol* 30 (13): 2520-2531.
- Kusumawaty D, Surtikanti HK, Hemawati, Tallei TE. 2020. Data on community structure and diversity of the intestinal bacteria in elver and fingerling stages of wild Indonesian shortfin eel (*Anguilla bicolor bicolor*). Data in Brief 29: 105299.
- Kwong WK, Mancenido AL, Moran NA. 2017. Immune system stimulation by the native gut microbiota of honey bees. *R Soc Open Sci* 4 (2): 170003.
- Kwong WK, Steele MI, Moran NA. 2018. Genome sequences of *Apibacter* spp., gut symbionts of Asian honey bees. *Genome Biol Evol* 10: 1174-1179.
- Lamei S. 2018. The Effect of Honeybee-Specific Lactic Acid Bacteria on American Foulbrood Disease of Honeybees. [Dissertation]. Lund University, Swedish.
- Laursen MF, Laursen RP, Larnkjær A, Mølgaard C, Michaelsen KF, Frøkiær H, Bahl MI, Licht TR. 2017. *Faecalibacterium* gut colonization is accelerated by presence of older siblings. *mSphere*. 2 (6): e00448-17. DOI: 10.1128/mSphere.00448-17.
- Lo N, Gloag RS, Anderson DL, Oldroyd BP. 2010. A molecular phylogeny of the genus *Apis* suggests that the giant honey bee of the Philippines, *A. breviligula* Maa, and the Plains Honey Bee of southern India, *A. indica* Fabricius, are valid species. *Syst Entomol* 35: 226-233.
- Lombogia CA, Tulung M, Posangi J, Tallei TE. 2020. Bacterial composition, community structure, and diversity in *Apis nigrocincta* Gut. *Int J Microbiol* 2020: 6906921. DOI: 10.1155/2020/6906921.
- Lombogia CA, Tulung M, Posangi J, Tallei TE. 2020. Antibacterial activities of culture-dependent bacteria isolated from *Apis nigrocincta* gut. *Open Microbiol J* 14: 72-76.
- Martinson VG, Danforth BN, Minckley RL, Rueppell O, Tingek S, Moran NA. 2011. A simple and distinctive microbiota associated with honey bees and bumble bees. *Mol Ecol* 20: 619-628.
- Miquel S, Martín R, Rossi O, Bermúdez-Humarán LG, Chatel JM, Sokol H, Thomas M, Wells JM, Langella P. 2013. *Faecalibacterium prausnitzii* and human intestinal health. *Curr Opin Microbiol* 16 (3): 255-261.
- Moran NA, Hansen AK, Powell JE, Sabree ZL. 2012. Distinctive gut microbiota of honey bees assessed using deep sampling from individual worker bees. *PLoS ONE* 7: e0036393. DOI: 10.1371/journal.pone.0036393.
- Moran NA. 2015. Genomics of the honey bee microbiome. *Curr Opin Insect Sci* 10: 22-28.
- Naureen Z, Rehman NU, Hussain H, Hussain J, Gilani SA, Al Housni SK, Mabood F, Khan AL, Farooq S, Abbas G, Harrasi AA. 2017. Exploring the potentials of *Lysinibacillus sphaericus* ZA9 for plant growth promotion and biocontrol activities against phytopathogenic fungi. *Front Microbiol* 8: 1477. DOI: 10.3389/fmicb.2017.01477.
- Ngalimat M S, Raja Abd Rahman R, Yusof MT, Syahir A, Sabri S. 2019. Characterization of bacteria isolated from the stingless bee, *Heterotrigona itama*, honey, bee bread and propolis. *Peer J* 7: e7478. DOI: 10.7717/peerj.7478.
- Niode NJ, Salaki, CL, Rumokoy LJM, Tallei TE. 2020. Lactic acid bacteria from honey bees digestive tract and their potential as probiotics. In: *Advances in Biological Sciences Research*, volume 8; International Conference and the 10th Congress of the Entomological Society of Indonesia (ICCESI 2019), Bali, 6-9 October 2019. [Indonesian]

- Piewngam P, Zheng Y, Nguyen TH, Dickey SW, Joo HS, Villaruz AE, Glose KA, Fisher EL, Hunt RL, Li B, Chiou J, Pharkjaksu S, Khongthong S, Cheung GYC, Kiratisin P, Otto M. 2018. Pathogen elimination by probiotic *Bacillus* via signalling interference. *Nature* 562: 532-537.
- Raymann K, Moran NA. 2018. The role of the gut microbiome in health and disease of adult honey bee workers. *Curr Opin Insect Sci* 26: 97-104.
- Sabaté DC, Carrillo L, Audisio M C. 2009. Inhibition of *Paenibacillus* larvae and *Ascosphaera apis* by *Bacillus subtilis* isolated from honeybee gut and honey samples. *Res Microbiol* 160: 193-199.
- Saraithong P, Li Y, Saenphet K, Chen Z, Chantawannakul P. 2017. Midgut bacterial communities in the giant Asian honeybee (*Apis dorsata*) across 4 developmental stages: A comparative study. *Insect Sci* 24: 81-92.
- Tajabadi N, Mardan M, Abdul Manap MY, Shuhaimi M, Meimandipour A, Nateghi L. 2011. Detection and identification of *Lactobacillus* bacteria found in the honey stomach of the giant honeybee *Apis dorsata*. *Apidologie* 42: 642-649.
- Tallei TE, Fatimawali, Pelealu JJ. 2019. The data on metagenomic profile of bacterial diversity changes in the different concentrations of fermented romaine lettuce brine. *Data in Brief* 25: 104190. DOI: 10.1016/j.dib.2019.104190.
- Wang H, Liu C, Liu Z, Wang Y, Ma L, Xu B. 2020. The different dietary sugars modulate the composition of the gut microbiota in honeybee during overwintering. *BMC Microbiol* 20: 61. DOI: 10.1186/s12866-020-01726-6.
- Wang M, Zhao W, Xu H, Wang ZW, He S. 2015. *Bacillus* in the guts of honey bees (*Apis mellifera*; Hymenoptera: Apidae) mediate changes in amylase values. *Eur J Entomol* 112: 619-624.
- Weihmann F, Waddoup D, Hötzl T, Kastberger G. 2014. Intraspecific aggression in giant honey bees (*Apis dorsata*). *Insects* 5: 689-704.
- Wu M, Sugimura Y, Iwata K, Takaya N, Takamatsu D, Kobayashi M, Taylor D, Kimura K, Yoshiyama M. 2014. Inhibitory effect of gut bacteria from the Japanese honey bee, *Apis cerana japonica*, against *Melissococcus plutonius*, the causal agent of European foulbrood disease. *J Insect Sci* 14: 129. DOI: 10.1093/jis/14.1.129.
- Yun JH, Jung MJ, Kim PS, Bae JW. 2018. Social status shapes the bacterial and fungal gut communities of the honey bee. *Sci Rep* 8. DOI: 10.1038/s41598-018-19860-7.
- Zheng H, Nishida A, Kwong WK, Koch H, Engel P, Steele MI, Moran NA. 2016. Metabolism of toxic sugars by strains of the bee gut symbiont *Gilliamella apicola*. *mBio* 7 (6): e01326-16. DOI: 10.1128/mBio.01326-16.
- Zheng H, Perreau J, Powell JE, Han B, Zhang Z, Kwong WK, Tringe SG, Moran NA. 2019. Division of labor in honey bee gut microbiota for plant polysaccharide digestion. *Proc Natl Acad Sci* 116 (51): 25909-25916.
- Zulkhairi Amin FA, Sabri S, Ismail M, Chan KW, Ismail N, Mohd Esa N, Mohd Lila MA, Zawawi N. 2019. Probiotic properties of *Bacillus* strains isolated from Stingless bee (*Heterotrigona itama*) honey collected across Malaysia. *Int J Environ Res Publ Health* 17 (1): 278. DOI: 10.3390/ijerph17010278.

Composition and diversity of bacteria from giant Asian honeybee *Apis dorsata* gut

ORIGINALITY REPORT

20%
SIMILARITY INDEX

12%
INTERNET SOURCES

15%
PUBLICATIONS

5%
STUDENT PAPERS

PRIMARY SOURCES

1 Submitted to Universitas Brawijaya
Student Paper 1%

2 Submitted to University College London
Student Paper 1%

3 Submitted to Institut Pertanian Bogor
Student Paper 1%

4 ciencia.ucp.pt
Internet Source 1%

5 docplayer.net
Internet Source 1%

6 vetmedmosul.com
Internet Source 1%

7 Waqar Ahmad, Shazia Khaliq, Nasrin Akhtar, Jamilah El Arab, Kalsoom Akhtar, Satya Prakash, Munir A. Anwar, Nayla Munawar. "Whole Genome Sequence Analysis of a Novel *Apilactobacillus* Species from Giant Honeybee (*Apis dorsata*) Gut Reveals Occurrence of

Genetic Elements Coding Prebiotic and Probiotic Traits", Microorganisms, 2022

Publication

8

Wu, M., Y. Sugimura, K. Iwata, N. Takaya, D. Takamatsu, M. Kobayashi, D. Taylor, K. Kimura, and M. Yoshiyama. "Inhibitory effect of gut bacteria from the Japanese honey bee, *Apis cerana japonica*, against *Melissococcus plutonius*, the causal agent of European foulbrood disease", *Journal of Insect Science*, 2014.

Publication

1 %

9

Sandro Castronovo, Lissa Helmholz, David Wolff, Jan Struckmann Poulsen et al. "Protein fractionation and shotgun proteomics analysis of enriched bacterial cultures shed new light on the enzymatically catalyzed degradation of acesulfame", *Water Research*, 2023

Publication

<1 %

10

Submitted to International Islamic University Malaysia

Student Paper

<1 %

11

Yuan Ge, Zhongwang Jing, Qingyun Diao, Ji-Zheng He, Yong-Jun Liu. "Host Species and Geography Differentiate Honeybee Gut Bacterial Communities by Changing the

<1 %

Relative Contribution of Community Assembly Processes", mBio, 2021

Publication

12

openresearchcentral.org

Internet Source

<1 %

13

uu.diva-portal.org

Internet Source

<1 %

14

Lampus, Harsali Fransiscus, Dikki Drajat Kusmayadi, and Bustanul Arifin Nawas. "The influence of topical mitomycin-C on total fibroblasts, epithelialization, and collagenization in anoplasty wound healing in Wistar rats", Journal of Pediatric Surgery, 2015.

Publication

<1 %

15

oamjms.eu

Internet Source

<1 %

16

protocolexchange.researchsquare.com

Internet Source

<1 %

17

Geon Goo Han, Eun Bae Kim, Jinyoung Lee, Jun-Yeong Lee et al. "Relationship between the microbiota in different sections of the gastrointestinal tract, and the body weight of broiler chickens", SpringerPlus, 2016

Publication

<1 %

18

Hongfang Wang, Chunlei Liu, Zhenguo Liu, Ying Wang, Lanting Ma, Baohua Xu. "The

<1 %

different dietary sugars modulate the composition of the gut microbiota in honeybee during overwintering", BMC Microbiology, 2020

Publication

19

Lilian Gavazzoni, Mariana Felgueira Pavanelli, Angelivia Gregório, Priscila Wielewski et al. " Bacterial microbiota in (Lepeletier, 1836) colonies ", Journal of Apicultural Research, 2022

Publication

20

genesandnutrition.biomedcentral.com

Internet Source

21

"Asian Beekeeping in the 21st Century", Springer Science and Business Media LLC, 2018

Publication

22

Khalid Ali Khan, Mohammad Javed Ansari, Ahmad Al-Ghamdi, Adgaba Nuru, Steve Harakeh, Javaid Iqbal. "Investigation of gut microbial communities associated with indigenous honey bee (Apis mellifera jemenitica) from two different eco-regions of Saudi Arabia", Saudi Journal of Biological Sciences, 2017

Publication

23

journals.plos.org

Internet Source

<1 %

<1 %

<1 %

<1 %

<1 %

- | | | |
|----|---|------|
| 24 | Ali Sevim, Alperen Kutalmış, Cafer Yabaneri. "ISOLATION, MOLECULAR CHARACTERIZATION, AND ANTIMICROBIAL ACTIVITY OF THE MEMBERS OF THE FAMILY BACILLACEAE OBTAINED FROM SOIL SAMPLES", Bacterial Empire, 2022
Publication | <1 % |
| 25 | Khalid Ali Khan, Ahmad A. Al-Ghamdi, Hamed A. Ghramh, Mohammad Javed Ansari et al. "Structural diversity and functional variability of gut microbial communities associated with honey bees", Microbial Pathogenesis, 2020
Publication | <1 % |
| 26 | Qinzhi Su, Min Tang, Jiahui Hu, Junbo Tang, Xue Zhang, Xingan Li, Qingsheng Niu, Xuguo Zhou, Shiqi Luo, Xin Zhou. "Significant compositional and functional variation reveals the patterns of gut microbiota evolution among the widespread Asian honeybee populations", Frontiers in Microbiology, 2022
Publication | <1 % |
| 27 | livedna.net
Internet Source | <1 % |
| 28 | static-curis.ku.dk
Internet Source | <1 % |
| 29 | Saraithong, Prakaimuk, Yihong Li, Kanokporn Saenphet, Zhou Chen, and Panuwan | <1 % |

Chantawannakul. "Midgut bacterial communities in the giant Asian honeybee (*Apis dorsata*) across four developmental stages: a comparative study", *Insect Science*, 2015.

Publication

30

Yanchun Deng, Sa Yang, Hongxia Zhao, Ji Luo, Wenchao Yang, Chunsheng Hou. "Antibiotics-induced changes in intestinal bacteria result in the sensitivity of honey bee to virus", *Environmental Pollution*, 2022

<1 %

31

core.ac.uk

Internet Source

<1 %

32

edepot.wur.nl

Internet Source

<1 %

33

media.neliti.com

Internet Source

<1 %

34

www.wageningenacademic.com

Internet Source

<1 %

35

Anthony Bertucci, Claire Hoede, Emilie Dassié, Pierre-Yves Gourves et al. "Impact of environmental micropollutants and diet composition on the gut microbiota of wild european eels (*Anguilla anguilla*)", *Environmental Pollution*, 2022

<1 %

Publication

36

Isha Hashmi, Saskia Bindschedler, Pilar Junier.
"Firmicutes", Elsevier BV, 2020

Publication

<1 %

37

Vicente Daniel Moreno Andrade, José Luis Hernández Flores, Miguel Angel Ramos López, Andrés Cruz Hernández et al. "Evaluation of the presence of Paenibacillus larvae in commercial bee pollen using PCR amplification of the gene for tRNACys", Brazilian Journal of Microbiology, 2019

Publication

<1 %

38

Xiaowei Gao, Jing Zhou, Xiaolin Sun, Xue Li, Yanmin Zhou. "Diversity analysis of subgingival microbial bacteria in peri-implantitis in Uygur population", Medicine, 2018

Publication

<1 %

39

Zhiqing Wang, Liping Liang, Le Liu, Zhi Wang, Ying Wang, Zonglin Yu, Baoping Wu, Ye Chen. "Changes in the Gut Microbiome Associated with Intussusception in Patients with Peutz-Jeghers Syndrome", Microbiology Spectrum, 2023

Publication

<1 %

40

aem.asm.org

Internet Source

<1 %

41

en.wikipedia.org

Internet Source

<1 %

42

indianentomology.org

Internet Source

<1 %

43

issuu.com

Internet Source

<1 %

44

pure.rug.nl

Internet Source

<1 %

45

tel.archives-ouvertes.fr

Internet Source

<1 %

46

web.archive.org

Internet Source

<1 %

47

www.locus.ufv.br

Internet Source

<1 %

48

www.rlp.digitale-doerfer.de

Internet Source

<1 %

49

"Beekeeping for Poverty Alleviation and Livelihood Security", Springer Nature, 2014

Publication

<1 %

50

A. M. Aguirre-Monroy, J. C. Santana-Martínez, J. Dussán. " as a Nutrient Enhancer during Fire-Impacted Soil Replantation ", Applied and Environmental Soil Science, 2019

Publication

<1 %

51

Mohamad Syazwan Ngalimat, Raja Noor Zaliha Raja Abd. Rahman, Mohd Termizi Yusof, Amir Syahir, Suriana Sabri. "

Characterisation of bacteria isolated from the stingless bee, , honey, bee bread and propolis ", PeerJ, 2019

Publication

<1 %

52

Terd Disayathanoowat. "T-RFLP analysis of bacterial communities in the midguts of Apis mellifera and Apis cerana honey bees in Thailand", FEMS Microbiology Ecology, 02/2012

Publication

<1 %

53

"Gut Microbiome and Its Impact on Health and Diseases", Springer Science and Business Media LLC, 2020

Publication

<1 %

54

D. N. Ganeshprasad, Jafar K. Lone, Kunal Jani, Yogesh S. Shouche et al. "Gut Bacterial Flora of Open Nested Honeybee, Apis florea", Frontiers in Ecology and Evolution, 2022

Publication

<1 %

55

Ilhem Saadouli, Amor Mosbah, Raoudha Ferjani, Panagiota Stathopoulou et al. "The Impact of the Inoculation of Phosphate-Solubilizing Bacteria Pantoea agglomerans on Phosphorus Availability and Bacterial

<1 %

Community Dynamics of a Semi-Arid Soil", Microorganisms, 2021

Publication

56

Salomón Virginia María, Gianni De Carvalho
Katia, Arroyo Florencia, Maldonado Luis María
et al. "Biopolymer production by bacteria
isolated from native stingless bee honey,
Scaptotrigona jujuyensis", Food Bioscience,
2021

Publication

<1 %

57

Samira Toutiaee, Naheed Mojgani, Naser
Harzandi, Mojtabah Moharrami, Ladan
Mokhberosafa. " probiotic and safety
attributes of spp isolated from beebread,
honey samples and digestive tract of
honeybees ", Letters in Applied Microbiology,
2022

Publication

<1 %

58

YuShuang Xu, YiHua Wang, HeWei Li, Yong Dai
et al. "Altered Fecal Microbiota Composition
in Older Adults With Frailty", Frontiers in
Cellular and Infection Microbiology, 2021

Publication

<1 %

Exclude quotes On

Exclude matches Off

Exclude bibliography On