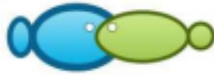


KORESPONDENSI PAPER

Judul : Suitability and carrying capacity of mangrove ecosystem for ecotourism in Jailolo Bay, West Halmahera, Indonesia

Jurnal : AACL Bioflux

No.	Aktivitas/Status	Tanggal	Keterangan
1.	Submission	17 Agustus 2022	Submission Letter
2.	First Decision	13 September 2022	Reviewers' Comments on the Manuscript
2.	Revision	14 September 2022	Revised version of the manuscript
3.	Accepted	29 September 2022	Acceptance letter/Certificate
4.	Published online	16 November 2022	Available online (open access)



Submission letter

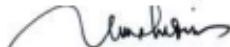
Article title: **Suitability and carrying capacity of mangrove ecosystem for ecotourism in Jailolo Bay, West Halmahera, Indonesia**

Hereby I would like to submit the manuscript entitled “**Suitability and carrying capacity of mangrove ecosystem for ecotourism in Jailolo Bay, West Halmahera, Indonesia**” to Aquaculture, Aquarium, Conservation & Legislation - International Journal of the Bioflux Society.

This manuscript was not submitted or published to any other journal. The authors declare that the manuscript is an original paper and contain no plagiarized text. All authors declare that they are not currently affiliated or sponsored by any organization with a direct economic interest in subject of the article. My co-authors have all contributed to this manuscript and approve this submission.

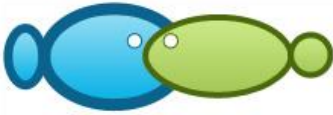
Corresponding author
Salim Abubakar, 

Rene C. Kepel, 

Nurhalis Wahidin, 

Desy M. H. Mantiri
Ternate, 17 August 2022 

Reviewers' Comments on Manuscript



Suitability and carrying capacity of mangrove ecosystem for ecotourism in Jailolo Bay, West Halmahera, Indonesia

¹Salim Abubakar, ²Rene C. Kepel, ²Rignolda Djamaluddin, ¹Nurhalis Wahidin, ²Winda M. Mingkid, ²Adnan S. Wantasen, ²Roike I. Montolalu, ²Desy M. H. Mantiri

¹ Faculty of Fisheries and Marine Sciences, Khairun University, Ternate, North Maluku, Indonesia; ² Faculty of Fisheries and Marine Sciences, Sam Ratulangi University, Manado, Indonesia. Corresponding author: S. Abubakar, mylasrinaldy@gmail.com

Abstract. The mangrove ecosystem is a natural resource with the potential to be used as a tourist destination. Ecotourism is a form of responsible activity in pristine areas with the objectives of conserving or preserving the environment, while at the same time providing livelihoods for local residents and involving elements of education. This study aims to determine the suitability and carrying capacity of Jailolo Bay mangrove area for ecotourism. The study found that Jailolo Bay mangroves are in the appropriate/feasible category for ecotourism development at five stations (villages of Guaemaadu, Gufasa, Gam Lamo, Porniti, Tuada, and Matui), while at one station (Guaria Village) the mangroves are in the less suitable (inappropriate) category. The area carrying capacity (ACC) for ecotourism activity of Jailolo Bay is 2634 people per day consisting of tracking activities (488 people per day), fishing (100 people per day), boating (1797 people per day), bird watching (59 people per day), picnic (175 people per day), and camping (15 people per day). The highest ecotourism ACC by station (village) was found at Matui Village, with 568 people per day, followed by Gam Lamo Village (488 people per day), Porniti Village (446 people per day), Tuada Village (442 people per day), and Gufasa Village (358 people per day), while the lowest AAC was found at Guaemaadu Village, with only 338 people per day.

Key Words: Suitability, carrying capacity, ecotourism, mangrove, Jailolo Bay.

Introduction. Ecologically, mangrove forests have functions in shoreline protection, climate change mitigation, potential tsunami threats reduction, erosion and abrasion control, seawater intrusion prevention, and providing various ecosystem services in forms of fisheries and forestry products (Djamaluddin et al 2019a; Winata et al 2020). Mangroves serve as spawning grounds, feeding grounds and nurseries for many species of fish, shellfish and crustaceans (Hutchison et al 2014). Mangrove ecosystem areas can also be used for fish and shrimp cultivation, fishing, and harvesting other natural products (Saru 2013; Vincentius et al 2018). The existence of mangrove forests appears to be an alternative habitat for wild animals (such as birds, bats, and monkeys), thus enriching the biodiversity of mangrove forests. This condition may be the basis for the development of mangrove ecotourism through bird-watching and other animal observation activities (Djamaluddin 2018).

The mangrove ecosystem is a natural resource that has the potential to be used as a tourism attraction. Utilization of mangrove areas can be developed with ecotourism-based activities, ecotourism being a form of educational tourism that focuses on human behavior in protecting the environment in a sustainable manner, also providing economic benefits and environmental services without exploiting mangroves extractively (Yanti et al 2021). Utilization of environmental services in the form of ecotourism will encourage

Commented [u1]: please shortly describe the methods used to achieve the aim of the study

Commented [u2]: please check the name in all the paper and correct where necessary, because you spell it differently almost every time, about 6 different spellings

Commented [u3]: key words must be different from words used in the title; please change all the ley words

conservation of mangrove ecosystems as buffer areas for conservation areas. The use of mangroves for ecotourism is also in line with the shift in tourist interest from old tourism to new tourism, which manages and seeks ecotourism destinations that are specific, natural, and rich in biodiversity (Salim et al 2018).

Ecotourism activities are an effective alternative to overcome the problem of environmental damage to mangrove ecosystems due to excessive levels of exploitation by the community by creating economic alternatives for the community. Ecotourism can be seen as an economic alternative based on conservation, because it does not damage nature, is not extractive and does not have a negative impact on the environment. With the ecotourism model, the community can take advantage of the intact natural beauty, culture, and local history without destroying or selling its contents, so that it can have a positive impact in the form of economic improvement, conservation, environmental conservation, and empowerment of local communities (Nugroho et al 2018; Opa et al 2021). To reduce the negative impact on the environment caused by conventional (mass) tourism, the concept of ecotourism is increasingly important because it can contribute to environmental protection and sustainable development. Ecotourism can be a conservation strategy that can open up economic alternatives for the community (Fitriana et al 2016; Gigovic et al 2016).

Ecotourism is currently a good option in promoting an environment that maintains its natural condition as well as becoming a tourism destination. Ecotourism potential is an environmental development concept based on an approach to nature conservation and protection. Ecotourism is a form of responsible activity in pristine areas, with the aim of conserving or preserving the environment while providing livelihoods for local residents and involving elements of education (Koroy et al 2017; Lasabuda et al 2019).

Tourism is one of the important tools to improve and support environmental conservation, including mangrove ecosystems of the tropics. Tourism development in natural areas, including mangrove ecosystems is considered important. This is very relevant in relation to the Indonesian government's policy on tourism development. Mangroves are one of the potential sites for sustainable tourism development. Mangrove conditions are unique, with potential natural resources in the form of landscapes, flora, fauna and socio-economic activities as ecotourism objects and attractions (Hakim et al 2017; Fisu et al 2020).

In developing a conservation area into a leading tourism destination, it is necessary to consider that tourism activities should not disrupt basic functions of the conservation area due to utilization that exceeds its carrying capacity. A higher number of tourists will decrease the tourism comforts. Meanwhile, the convenience factor has an important role for tourists enjoying a tourist location. By calculating the carrying capacity, managers can objectively limit the number of tourists when it has exceeded the maximum threshold. Carrying capacity is the maximum number of people who can visit a tourist attraction at the same time without causing physical, economic or socio-cultural damage and other effects that may reduce the quality of visitor satisfaction (Murtini 2017).

The carrying capacity of ecotourism is calculated using the concept of regional carrying capacity. The area carrying capacity (ACC) is the maximum number of visitors that can be physically accommodated in an area at a certain time without causing disturbance to nature and human environment (Yulianda 2019; Djunaidi et al 2020).

Jailolo Bay of West Halmahera Regency has abundant coastal and marine resources and is an estuary/tidal area with many rivers and straits, shaping it in the form of a fan. With a wide expanse (329.91 ha) of mangrove ecosystem and dense (± 673.34 m), the Jailolo Bay area is a habitat for various types of animals such as birds, snakes, crocodiles, dugongs, and many others. The advantages of the characteristics of natural resources owned by the mangrove ecosystem have the potential to be developed into ecotourism products, because ecotourism can be a conservation strategy that can open up economic alternatives for the community. The development of ecotourism business is aimed at optimally and sustainably increasing the economic, ecological and social benefits of various natural resources in the Jailolo Bay area for regional development progress and benefits of its community. With the ecotourism concept, it is hoped that the preservation of biological resources and the balance of the ecosystem can be realized, so that it can

Commented [u4]: density of what? also, density is not measured in meters, please correct

support efforts to improve the welfare and quality of life of the people around the Jailolo Bay area. This study aims to determine the suitability and carrying capacity of mangrove ecotourism in the Jailolo Bay area.

Material and Method

Research site. The research was conducted in Jailolo Bay, Jailolo District, West Halmahera Regency, covering 7 sampling stations (villages) namely the villages of Guaemaade, Gufasa, Gam Lamo, Porniti, Tuada, Matui and Guaria (Figure 1). The research was carried out from March to April 2022.

Commented [u5]: this is different from the spelling in the abstract; please correct where necessary

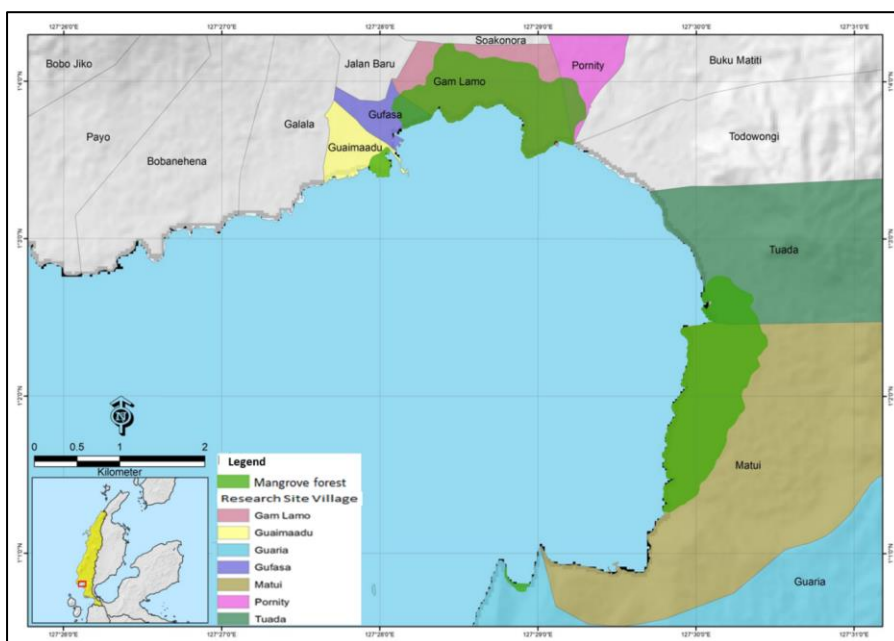


Figure 1. Research area in Jailolo Bay, North Maluku, Indonesia.

Commented [u6]: you spel Guaimaadu in the figure, different from the text

Ecotourism area suitability. Determination of the suitability of mangrove area for ecotourism was based on 3 criteria, namely ecology, socio-economic criteria and supporting criteria. Ecological aspects consisted of diversity and vegetation structure including mangrove thickness, mangrove cover, mangrove species, presence of fauna, area characteristics (substrate, inundation level), uniqueness, authenticity, and dangerous biota. Socio-economic aspects included public acceptance, public health, culture, education, security and employment. The supporting aspects included transportation accessibility, tourist facilities, markets, electricity, environmental sanitation (drinking water sources, WC/toilet facilities, trash bins) and institutions (planning documents, coastal spatial planning, coastal and sea management regulations, law enforcement, cooperatives, local handy-crafts, and post-harvest processing).

Mangrove vegetation. Mangrove vegetation collection was carried out using the "spot check" method. Transects were drawn perpendicular from the coastline along the mangrove vegetation, 3 pieces per research station. Vegetation data retrieval was carried out using plots of 5 pieces per transect, with a size of 10x10 m for the tree category (diameter >4 cm), 5x5 m for the tiller category (diameter <4 cm, height >1 m) and 2x2

m for the category of seedlings (height <1 m) (English et al 1997; Kusmana et al 2015; Malik et al 2019; Mukhtar et al 2021; Opa et al 2021). Identification of mangrove plants was based on the guidelines of Noor et al (2012).

Types of biota. Fish and shrimp were collected using gill nets with a mesh size of 1.5-2 inches. The nets were placed in the front zone and operated at low tide, assuming that fish will exit the mangrove forest search for deeper areas (Abubakar et al 2019; Asan et al 2019). The fish caught were then identified based on the guide of Peristiwa (2006), while the species of shrimp were based on Kordi (2011) and Rahayu et al (2017). Molluscs were collected using the quadratic transects method. Molluscs were collected following a mangrove transect (10x10 m) drawn perpendicular from the shoreline to the mainland along the mangrove vegetation, and 4 sub-transects were made in each mangrove transect. The molluscs obtained were identified based on the instructions of Dharm (2005). Crabs were observed directly in the field and identified based on the instructions of Sulistiono et al (2016) and Krisnawati et al (2018). Observations of birds and reptiles were carried out in the morning and afternoon, between 07.00–09.00 and 14.00–18.00. Observations were carried out using binoculars for ±2 hours. Observations were made in all areas based on information gathered from the community, such as locations or places to forage, mate, sleep, rest, and so on. Reptiles and birds observed were determined based on the instructions of Arini et al (2011), Sari (2012), and Hanjar et al (2016).

Commented [u7]: please convert to cm

Commented [u8]: you have 4 hours in the afternoon (check the previous sentence and correct where necessary)

Area characteristics. The class of inundation of the mangrove ecosystem was measured based on the time period of the tide for 1 day using the Motowali (Mobile tide waffle level instrument) tool. The inundation class measurement was carried out to determine the frequency of tidal inundation that occurred during the day/month. Substrate sampling was done using an iron paralon pipe (PVC, 2.5 inches in diameter) at a depth of 0-30 cm (Djameluddin 2018). 3 substrate samples were collected from each location based on the type of zoning, namely the front zone, middle zone and back zone. Each sample had a weight of 500 g. Determination of the type of texture was carried out at the Soil Mechanics Laboratory, Faculty of Engineering, Khairun University, Indonesia.

Commented [u9]: please convert to cm

Interviews. Determination of the suitability of ecotourism from socio-economic and supporting criteria was obtained from public perception based on the Likert scale. The Likert scale was used to measure attitudes, opinions, and perceptions of a person or group of people about social phenomena (Sugiyono 2014). Scores were given for each choice using 4 categories, namely: strongly agree (SA), with a score of 4; agree (A), with a score of 3; fairly disagree (FD), with a score of 2; disagree, (D) with a score of 1. Local people were interviewed using census sampling. Census sampling is a sampling technique where all members of the population are used as samples. The population used as a sample was people who live or are met when data collection is aged 25-65 years, so the number of respondents in each research location varies. The total number of respondents was 1006 persons spread across Guaemaadu Village (145 people), Gufasa Village (159 persons), Gam Lamo Village (150 persons), Porniti Village (165 persons), Tuada Village (159 persons), Matui Village (154 persons), and Guari Village (74 persons).

Commented [u10]: not understandable; please rephrase

Data analysis

Mangrove tourism suitability. Analysis of the suitability of mangrove tourism for ecological criteria was carried out considering 9 parameters with 4 suitability group classifications, namely: very suitable (S1), suitable (S2), less suitable (S3) and not suitable (N) (Tuwo 2011). The matrix of land suitability for mangrove ecotourism is presented in Table 1.

Table 1

Mangrove ecotourism suitability matrix

<i>N</i> ₀	Parameter	Weight	Category	Score	Reference
1	Mangrove thickness	18	>500	3	Yulianda (2019)
			>200-500	2	
			50-200	1	
			<50	0	
2	Mangrove cover	18	>75%	3	Tuwo (2011)
			50-74.9%	2	
			25-49.9%	1	
			>5-24.9	0	
3	Mangrove type	15	≥7	3	Tuwo (2011)
			5-6	2	
			3-4	1	
			<3	0	
4	Presence of fauna	15	Fish, crustaceans, mollusks, reptiles, birds	3	Yulianda (2019)
			Fish, crustaceans, mollusks	2	
			Fish, crustaceans	1	
			One fauna	0	
5	Uniqueness	10	4 conditions	3	Tuwo (2011) Wardhani (2011) Abubakar et al (2019)
			3 conditions	2	
			2 conditions	1	
			1 conditions	0	
6	Natural condition	10	Natural	3	Tuwo (2011) Djamaluddin et al (2019b)
			Lightly disturbed	2	
			Fairly disturbed	1	
			Heavily disturbed	0	
7	Zone characteristics				
a	Substrate	5	Sand, silty sand, silt, and sandy silt	3	Tuwo (2011) Tefarani et al (2019)
			Sand, silty sand, silt	2	
			Sand, silty sand	1	
			Sand	0	
b	Level of inundation	5	Always flooded (1-2 times/day, at least 20 days/month)	3	Kusmana et al (2014) Iswahyudi et al (2019)
			10-19 days/month	2	
			9 days/month	1	
			Rarely flooded	0	
8	Harmful species	4	No harmful biota	3	Tuwo (2011); Noor et al (2012) Iskandar et al (2019)
			<2	2	
			2-3	1	
			>2	0	

Note: source - modified from Tuwo (2011).

The suitability of mangrove ecotourism uses the following formula:

$$IKW = \sum \left[\frac{Ni}{Nmax} \right] x 100\%$$

Where: IKW - ecosystem suitability index for mangrove ecotourism; Ni - value of the ⁱth parameter (weight x score); Nmax - maximum value of the ecotourism category (Nmax=300).

Commented [u11]: please mention how you determined each parameter

Commented [u12]: please add a reference for the formula

The criteria for socio-economic aspects and supporting scoring for mangrove ecotourism locations are presented in Table 2. The standard value for eligibility is presented in Table 3.

Table 2

Scoring criteria for social aspects supporting mangrove ecotourism

	Parameter	Suitable condition
Social criteria		
1	Community acceptance	Good
2	Community health	Good
3	Education	Good
4	Security/Safety	Safe
5	Employment	Good
Supporting criteria		
1	Accessibility	Accessible
2	Drinking water	Available

Note: source - Tuwo (2011).

Table 3

Eligibility standard value

Suitability value (%)	Suitability category	
81.26-100	Very suitable	Very good
62.52-81.25	Suitable	Good
43.76-62.5	Less suitable	Fairly good
25-43.75	Not suitable	Bad

Note: source - Tuwo (2011).

Mangrove ecotourism supporting capacity. The analysis of the carrying capacity of mangrove ecotourism used the Regional Carrying Capacity (DDK) approach. DDK represents the maximum number of visitors that can be physically accommodated in the area at a certain time without causing disturbance to nature and humans. DDK calculation uses the following formula (Yulianda 2019):

$$DDK = K \times \frac{Lp}{Lt} \times \frac{Wt}{Wp}$$

Where: DDK - regional carrying capacity (person/day); K - ecological potential of visitors per unit area (person); Lp - area/length of area that can be utilized (m or m²); Lt - unit area for a certain category (m or m²); Wt - time provided by the area for tourism activities in one day (hours); Wp - time spent by visitors for each particular activity (hours).

The ecological potential of visitors is determined by the condition of the resources and the type of activities developed. The area used by visitors must pay attention to the ability of nature to tolerate visitor activities, so that authenticity is maintained. Visitor activity time (Wp) is calculated based on the length of time visitors spend traveling. Visitor time is calculated with the time provided by the area (Wt), which is the length of time the area is opened in one day for tourism activities (Table 4).

Table 4

Ecological potential of visitors (K), area of activity (Lt), visit duration (Wp), and time provided by the tourist attraction (Wt)

No	Type of activity	K (Σ visitors)	Area unit (Lt)	Visit duration Wp (jam)	Total time for 1 day Wt (jam)
1	Tracking	1	50 m	2	8
2	Fishing	1	25 m	3	6
3	Canoeing	6	50 m	1	8

Commented [u13]: please use English

Commented [u14]: please use English

4	Bird watching	1	64 m ²	2	8
5	Picnic	1	16 m ²	2	8
6	Camping	4	400 m ²	24	24

Note: modified from Yulianda & Atmadipoera (2019) and Winata et al (2020).

Results and Discussion

Ecological suitability. Ecological suitability includes mangrove thickness, mangrove cover, mangrove species, presence of fauna, uniqueness, natural condition (authenticity), area characteristics (substrate, level of inundation) and hazardous biota.

Mangrove forest thickness. The measurement of the thickness of the mangrove forest in Jailolo Bay is based on Sentinel 2A image data. The highest mangrove forest thickness was in Matui Village with a thickness of 1776.3 m, followed by Gam Lamo Village (1430.3 m), Porniti Village (542.4 m), Tuada Village (486.3 m) and Guaemaadu Village (296.2 m). The lowest thickness was observed in Gufasa Village and Guaria Village, with a thickness of 90.9 m. Based on the ecotourism suitability matrix, the stations that have a score of 3 are Gam Lamo Village, Porniti Village and Matui Village, a score of 2 was obtained by Guaemaadu Village and Tuada Village, and a score of 1 by Gufasa Village and Guaria Village. This means that from the mangrove thickness parameter perspective, Gam Lamo Village, Porniti Village and Matui Village are very suitable for ecotourism, Guaemaadu Village and Tuada Village are suitable for ecotourism and Gufasa and Guaria villages are not suitable for ecotourism. The parameter of mangrove thickness in the development of mangrove ecotourism functions on mangrove tracking activities and affects the carrying capacity of the area to accommodate visitors. Physically, the thickness of the mangroves functions as a breakwater and producer of litter (helping mangrove and plankton growth), which can increase diversity, number of individuals, and number of associated organisms (Rodiana et al 2019).

Mangrove cover. The percentage of mangrove cover was mapped and calculated using high resolution aerial photography (drone mapping). The data obtained showed that mangrove cover at Matui Village was highest, with a percentage of 78.72%, followed by Gufasa Village (76.39%), Tuada Village (75.30%), Porniti Village (69.81%), Gam Lamo Village (69.33%) and Guaemaadu Village (67.14% m). The lowest mangrove cover was in Guaria Village, with a percentage of 39%. Based on the ecotourism suitability matrix, stations that have a score of 3 are Matui Village, Gufasa Village and Tuada Village, a score of 2 was obtained by Porniti Village, Gam Lamo Village and Guaemaadu Village and a score of 1 by Guaria Village. This means that from the mangrove cover parameter perspective, Matui Village, Gufasa Village and Tuada Village are very suitable for ecotourism, Porniti Village, Gam Lamo Village and Guaemaadu Village are suitable for ecotourism and Guaria Village is not suitable for ecotourism. In terms of ecotourism, mangrove cover is related to the convenience of tourists in tourism activities along the mangrove area by boat or tracking route. The lush mangroves create a cooling impression and attract visitors.

Mangrove type. The composition of mangroves found in Jailolo Bay presented 12 families with 21 species, consisting of 18 major true mangrove species and 4 minor true mangrove species. Major true mangroves consisted of 10 families, namely the Rhizophoraceae family (*Rhizophora apiculata*, *R. stylosa*, *R. mucronata*, *Bruguiera gymnorrhiza*, *B. parviflora*, *Ceriops decandra*, *C. tagal*), Sonneratiaceae (*Sonneratia alba*), Avicenniaceae (*Avicennia alba*, *A. marina*, *A. lanata*), Myrsinaceae (*Aegiceras corniculatum*), Meliaceae (*Xylocarpus granatum*, *X. moluccensis*), Sterculiaceae (*Heritiera littoralis*), Combretaceae (*Lumnitzera littorea*), Rubiaceae (*Scyphiphora hydrophyllacea*), Arecaceae (*Nypa fruticans*) and Eliphorbiaceae (*Excoecaria agallocha*). While for true minor mangroves, it consisted of 2 families, namely Acanthaceae (*Acanthus ilicifolius*) and Pteridaceae (*Acrostichum aureum*, *A. speciosum*). The highest number of mangrove species was found in Porniti Village, with 13 species, followed by Tuada Village (12 species), Gam Lamo Village and Matui Village (11 species each), Guaria Village (10 species) and Gufasa Village (8 species). The lowest number of mangroves species was found in Guaemaadu Village, with only 5 species. Based

Commented [u15]: please move this sentence to Material and Method, where it fits

Commented [u16]: what do you mean by thickness exactly? because you give here some distances/lengths, expressed in meters (so it is not thickness)
- what does mangrove thickness show?

Commented [u17]: please give the value for both villages

Commented [u18]: please move this sentence to Material and Method, where it fits

Commented [u19]: 18 species with 4 species equal 22 species, not 21; please correct where necessary

- also, next you present 19 major species and 3 minor species, not 18 and 4; please check again the numbers and make the corrections where necessary

on the ecotourism suitability matrix, the research stations that obtained a score of 3 were Gufasa, Gam Lamo, Porniti, Tuada, Matui and Guaria villages, while **Guaemaadu** Village had a score of 2. This means that, based on mangrove species number, 6 research stations (Gufasa, Gam Lamo, Porniti, Tuada, Matui, Guaria) were very suitable for ecotourism, while **Guaemaadu** Village was suitable for ecotourism. Yulianda (2019) stated that mangrove species diversity has visual and comfort values for ecotourism visitors.

Presence of fauna. The composition of fauna obtained in all research stations presents aquatic fauna/biota and terrestrial fauna. Fauna/biota includes molluscs, fish, crustaceans (crabs, prawns), birds and reptiles (monitor lizards, crocodiles), which all live and associate in the mangrove ecosystem. Based on the ecotourism suitability matrix, all research stations have a score of 3. This means that, from the perspective of mangrove fauna, all stations are very suitable for ecotourism. The diversity of biota adds to the attractiveness value of mangrove habitats (Sadikin et al 2017; Djamaluddin 2018; Yulianda 2019).

Area characteristics. Characteristics of the area include substrate and level of inundation. The level of inundation shows that all research stations are in the class **All high tides inundation**, because all research stations have homogeneous area characteristics such as salinity content, tidal period (length of inundation), soil texture type and land slope. The research location has a mixed **semi-diurnal type**, which is characterized by two high tides and two low tides in a day, which are almost the same height as the flat slope, so that the mangrove forest area has a wide tidal period. The water level and the frequency of sea tides can determine tourist comfort (Yulianda 2019). Inundation class **All high tides** has a salinity of 10-30 ppt and a tidal frequency with permanent inundation (1-2 times/day, minimum 20 days/month) (Kusmana et al 2014). The soil texture of this class is represented by corals, sandy and sandy muddy substrates. The tidal period is usually 6 hours (Iswahyudi et al 2019). The land slope is relatively flat (Matatula et al 2018). The range of the slope of the flat slope = 0-3% (Kalay et al 2018). Types of textures **Guemaadu** Village has are clay and sandy mud, Gufasa Village has clay, sandy mud and sandy clay textures, Gam Lamo Village has clay, clay-mud, sandy mud, sandy-clay textures, Porniti Village has muddy sand, clay-mud and sandy mud, Tuada Village has clay, sandy mud and sandy clay, Matui Village presents clay, sandy mud, sandy-clay, muddy sand and mud, and Guaria Village presents clay, sandy mud and argillaceous mud substrate textures. Based on the suitability matrix for mangrove ecotourism, all research stations have a score of 3. This means that the substrate parameters are very suitable for ecotourism. Substrate (hard, soft, sandy/muddy) is appropriate for the area to be used as a mangrove tourism location (Tuwo 2011), so that edu-tourism-based mangrove tourism activities can be developed (Setiyaningrum et al 2020). The type of substrate such as sand, muddy sand, clay and sandy mud is one of the factors that determine the growth of different species of mangroves (Tefarani et al 2019).

Uniqueness. The characteristics of the mangrove ecosystem area in all research stations have interesting objects, flora, fauna, and physical aspects. The flora consists of true and untrue mangroves. Fauna/biota consists of molluscs, fish, crustaceans (crabs, shrimp) birds, and reptiles (monitor lizards, crocodiles). A uniqueness character in the villages Porniti, Tuada, and Guaeria is the white sandy beaches. Matui Village beach conditions are dominated by muddy sand and partly rocky. Meanwhile, the villages **Guaemaadu**, Gufasa and Gam Lamo have muddy beaches because the area is protected by mangrove forests. Villages that have coral reefs are Guaeria and Tuada. Between Matui and Tuada villages, coral reefs are at the front of the coastal waters, are visible at low tide, naturally functioning as a barrier and breakwater and preventing coastal abrasion. In addition, the location of this study is dominated by seagrass beds in coastal waters, which function as sediment traps. Based on the suitability matrix of mangrove ecotourism for the uniqueness parameter, all research stations have a score of 2. This means that the uniqueness parameter is suitable for ecotourism. The uniqueness is based on 4 considerations, namely: 1) the existence of interesting objects, both flora and fauna; 2) there is a

Commented [u20]: this does not correspond with the categories you mentioned in Material and Method (Table 1); please correct, and use the categories you mentioned there

Commented [u21]: type of what? please mention

Commented [u22]: please correct with a category you mentioned in Material and Method

Commented [u23]: this is missing from References; please add it there too

panorama or natural beauty, which has a certain appeal; 3) nice landscape; 4) rare/protected animals and plants (Wardhani 2011; Abubakar et al 2019).

Natural condition (authenticity). The authenticity of the mangrove area is characterized by the natural condition of the area, which has not been disturbed. There are 5 types of land use in Jailolo Bay: ponds, settlements, roads, ports, livestock. The pond land conversions are located in Gufasa Village, Gam Lamo Village, Porniti Village and Tuada Village. Land clearing for ponds occurs in the village of Porniti, covering an area of ±1 ha. The ponds in Gufasa Village and Gam Lamo Village are no longer used, and have an area of ±1 ha. In Tuada Village, between 2019-2022, there was a conversion of 2 ha of mangrove land. Village area land conversion is found in all villages in Jailolo Bay. Meanwhile, the conversion of roads and ports exists in Guaria Village and Guaemaade Village. The conversion of livestock land is found in Guamaadu Village. Based on the suitability matrix of mangrove ecotourism for the authenticity parameter, the research stations have a score of 0. This means that, from the authenticity parameter perspective, all research stations are not suitable for ecotourism. The level of disturbance consists of mild (<5 trees), very light (5-25 trees), moderate (25-50 trees), severe (50-70 trees), very heavy (>75 trees) (Djamaluddin et al 2019b).

Commented [u24]: what does the level of disturbance represent? and why is it measured in number of trees?

Harmful biota. All research stations have harmful biota, namely crocodile (*Crocodylus porosus*). Based on the suitability matrix of mangrove ecotourism, the research stations have a score of 2. It means that from the perspective of dangerous biota, all research stations are suitable for ecotourism. There are some tourists who like dangerous biota, so it can become an ecotourism attraction. However, there must be management efforts to ensure safety in tourism objects in order to create a sense of security, comfort and safety for tourists. Dangerous biota include crocodiles, snakes (in water, mangroves, and ponds), wild boars, monkeys (Noor et al 2012).

Commented [u25]: if you did not have all these, please delete

The results of the analysis of the mangrove ecotourism suitability, characterized by IKW value are presented in Table 5.

Table 5
Mangrove ecosystem suitability index for tourism (IKW) in Jailolo Bay

Village	IKW (%)	Valuation category
Guemaadu	68.33	Suitable
Gufasa	73.33	Suitable
Gam Lamo	79.33	Suitable
Porniti	79.33	Suitable
Tuada	79.33	Suitable
Matui	85.33	Suitable
Guaria	61.33	Less suitable

Socio-economic suitability. Socio-economic suitability was based on several aspects, namely: perceptions of public acceptance, public health, culture, education, security and employment. The results of the suitability analysis of the socio-economic aspects of the community towards the development of mangrove ecotourism in Jailolo Bay are generally in good category (Table 6).

Table 6
Aspects of community socio-economic feasibility of mangrove ecotourism development in Jailolo Bay

No	Socio-economic suitability	Research station (village)						
		Guemaadu	Gufasa	Gam Lamo	Porniti	Tuada	Matui	Guaria
1	Community acceptance	85.48	82.21	82.63	81.59	81.03	79.37	68.22
2	Community health	89.90	87.41	79.82	80.45	68.82	75.02	73.91

3	Culture	62.02	74.02	75.00	68.84	68.99	70.24	60.66
4	Education	77.20	76.72	71.91	64.46	62.34	62.19	55.50
5	Security	78.78	85.81	81.80	87.99	62.80	76.74	66.23
6	Employment	61.98	62.40	62.48	62.46	61.71	60.34	61.17
	IKW	75.89	78.10	75.61	74.30	67.62	70.65	64.28
	Valuation category	Good	Good	Good	Good	Good	Good	Good

Note: IKW - mangrove ecosystem suitability index for tourism.

Commented [u26]: is this still IKW? you say in Material and Method that IKW is the Mangrove Ecosystem Suitability Index for tourism, and this is socio-economic suitability, not ecosystem suitability

Supporting aspects suitability. Ecotourism development needs to be supported by facilities and infrastructure. The results of the feasibility analysis of supporting aspects for the development of mangrove ecotourism in Jailolo Bay are generally good in villages **Guaemaadu**, Gufasa, Gam Lama, Porniti and not good (fairly good) in the other three villages (Tuada, Matui, Guari) (Table 7).

Table 7
Feasibility of supporting aspects for mangrove ecotourism development in Jailolo Bay

No	Supporting aspects suitability	Research station (village)						
		Guaemaadu	Gufasa	Gam Lamo	Porniti	Tuada	Matui	Guaria
1	Infrastructure	80.96	82.11	75.27	69.48	67.00	63.30	55.64
2	Institutional aspect	60.36	60.36	60.36	61.28	61.28	61.28	60.36
3	Sanitation	84.26	85.33	84.42	82.21	49.92	49.76	36.86
	IKW	75.19	75.93	73.35	70.99	59.40	58.11	50.95
	Valuation category	Good	Good	Good	Good	Not good	Not good	Not good

Note: IKW - mangrove ecosystem suitability index for tourism.

Mangrove ecotourism area suitability. According to the results of the analysis of the three criteria for developing mangrove ecotourism in Jailolo Bay, namely ecological, socio-economic and supporting criteria, the development of mangrove ecotourism in Jailolo Bay is in the appropriate/suitable category for five stations/villages (**Guaemaadu**, Gufasa, Gam Lamo, Porniti, Tuada, Matui), while Guaria Village is categorized as less suitable/less feasible (Table 8).

Table 8
Feasibility of mangrove ecotourism development in Jailolo Bay

Village	Criteria									IKW (%)	Valuation category
	Ecological			Socio-economic			Supporting				
	Score	Weight	S x B	Score	Weight	S x B	Score	Weight	S x B		
Guemaadu	68.33	0.31	21.28	75.89	0.35	26.25	75.19	0.34	25.77	73.30	Suitable
Gufasa	73.33	0.32	23.62	78.10	0.34	26.79	76.24	0.33	25.53	75.94	Suitable
Gam Lamo	79.33	0.35	27.53	75.61	0.33	25.01	73.66	0.32	23.73	76.27	Suitable
Porniti	79.33	0.35	28.02	74.30	0.33	24.58	70.99	0.32	22.44	75.03	Suitable
Tuada	79.33	0.38	30.50	67.62	0.33	22.16	59.40	0.29	17.10	69.76	Suitable
Matui	85.33	0.40	34.01	70.65	0.33	23.31	58.11	0.27	15.77	73.10	Suitable
Guaria	61.33	0.35	21.27	64.28	0.36	23.36	51.26	0.29	14.86	59.49	Less suitable

Note: IKW - mangrove ecosystem suitability index for tourism.

Commented [u27]: what is B in this row?

Guaria Village is not suitable for developing its mangrove ecosystem as an ecotourism area because, from the ecological aspect, the mangrove ecosystem has very thin mangrove thickness (90.9 m), land is now converted into settlements and roads, and the mangrove cover is low (39%). Furthermore, the village does not have a good condition of culture, education, and employment. Guaria Village does not have a culture that can be used as an attraction for tourists (such as ritual events, types of artistic and cultural attractions, and art studios). Its educational facilities are minimal, namely there are only elementary schools, so that in the process of accessing higher education, people have to travel by sea every day because there is no road yet. In terms of employment, the community generally has a livelihood as farmers and fishermen. Meanwhile, from the supporting aspects in the form of inadequate transportation facilities, the village has poor environmental sanitation because it gets clean water from wells and rainwater. Toilet facilities are not yet feasible. Lastly, littering is common on the beach.

Commented [u28]: please rephrase

Ecotourism is a form of utilizing ecosystem services as tourist areas by exploring its beauty to bring economic benefits to ecotourism managers or coastal communities who use coastal areas as their livelihood source, followed by protection, maintenance and restoration of coastal ecosystems carried out by managers or communities as direct beneficiaries (Apriana & Milla 2017). Tourism activities that will be developed should be adjusted to the potential of resources and their designation. Every tourism activity has resource and environmental requirements that are appropriate for the tourism object to be developed (Abubakar et al 2019). Ecotourism activities must be able to improve the social and economic welfare of the community. Therefore, before developing ecotourism, it is necessary to analyze the socio-economic conditions of the community in order to know the strengths and weaknesses that exist in the community and also need to be supported by facilities and infrastructure for a proper development (Tuwo 2011).

Commented [u29]: this idea already exists in the introduction; please delete

Commented [u30]: too general info; please move to the Introduction, where it fits, but do not repeat info that already exists there

Commented [u31]: please move to Material and Method, where it fits

Carrying capacity of mangrove ecotourism areas. The ACC analysis was carried out only at research stations that had categories suitable for the development of mangrove ecotourism. ACC analysis is based on the ecological potential of the resource conditions of each research station to determine the type of activity to be developed. Furthermore, the area that can be used for each type of activity (Lp), the time of tourist activities based on the length of time spent by tourists doing tourism activities (WP), and the time of tourists are calculated with the time provided for the area (Wt). Based on the observations, the types of activities that can be developed in mangrove ecotourism in Jailolo Bay are tracking, fishing, boating, bird watching, picnics and camping. Calculated ACC for mangrove ecotourism at Jailolo Bay was 2634 persons per day consisting of tracking activities (488 persons per day), fishing (100 persons per day), boating (1797 persons per day), bird watching (59 persons per day), picnic (175 persons per day) and camping (15 persons per day). The highest ACC was in Matui Village, with 568 people per day, followed by Gam Lamo Village (488 people per day), Porniti Village (446 people per day), Tuada Village (442 people per day) and Gufasa Village (352 people per day), while the lowest ACC was found in Guaemadu Village, 338 people per day. This number indicates that there is a limitation on the number of visitors, which is intended to reduce the negative impact on the area. The results of the ACC analysis are presented in Figure 2.

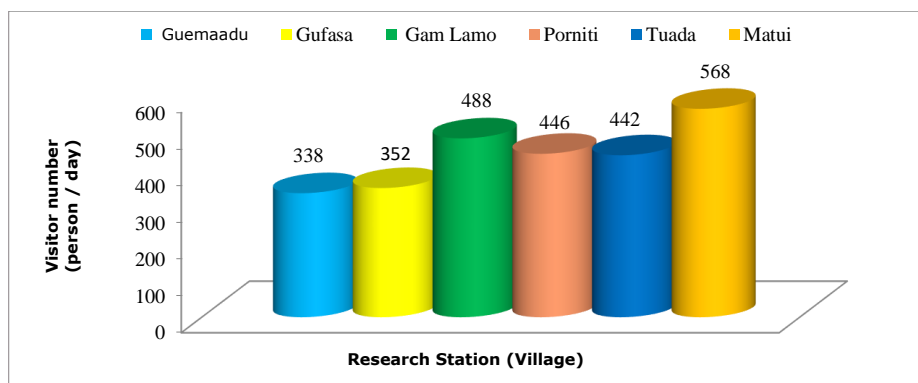


Figure 2. Carrying capacity of mangrove ecotourism areas in Jailolo Bay.

Commented [u32]: please delete; the info was already presented in the text, and the figure does not bring any new information

The difference in the number of visitors based on the ACC value was influenced by the difference in the number of types of activities and the area that will be developed for each research station. The high value of ACC in Matui Village was related to its bigger mangrove area of 149.98 ha, mangrove thickness of 1776.35 m, and diverse ecological potential characteristics. Matui Village has good potentials to develop all 6 types of tourism activities. Meanwhile, Guaria Village has a lower ACC value because it only has an area of

1.73 ha, with a thickness of 90.95 m, so that only 4 types of activities can be developed, namely tracking, fishing, boating and bird watching. The ecological potential of visitors (K) per unit area for all types of mangrove tourism activities is 1 person. Unit area (Lt) for the categories of tracking is 50 m, for fishing it is 25 m, boating 500 m, bird watching 67 m, picnic 16 m and camping 100 m. The time spent by visitors for each activity (Wp) consists of 2 h for tracking, 3 h for fishing, 1 h for boating, 2 h for bird watching, 2 h for picnic and 24 h for camping (Yulianda & Atmadipoera 2019; Winata et al 2020). With the concept of carrying capacity, it is hoped that the use of ecotourism will be able to prevent damage to natural resources and the environment. Efforts to manage natural resources and the environment in a sustainable manner can be carried out, while still considering the welfare of local communities who use the resources. The carrying capacity of the area of a tourist attraction should be considered in the development of a tourist attraction. The carrying capacity of the area is developed to reduce the impacts of tourism activities on environmental degradation and to maintain the sustainability of tourism development (Rini et al 2018).

Conclusions. Mangrove ecotourism development in Jailolo Bay is in appropriate/suitable category for five stations (they are the villages of **Guaemaadu**, Gufasa, Gam Lamo, Porniti, Tuada, Matui), while Guaria Village is in less suitable/not-suitable category. The mangrove ecotourism area carrying capacity of Jailolo Bay is 2634 persons per day consisting of tracking activities (488 persons per day), fishing (100 persons per day), boating (1797 persons per day), bird watching (59 persons per day), picnic (175 persons per day), and camping (15 persons per day). The highest ACC was at Matui Village, with 568 persons per day, followed by Gam Lamo Village (488 persons per day), Porniti Village (446 persons per day), Tuada Village (442 persons per day) and Gufasa Village (358 persons per day), while the lowest DDK was found in **Guaemaadu** Village, with 338 persons per day.

Conflict of interests. The authors declare no conflict of interest.

References

- Abubakar S., Subur R., Darmawaty, Akbar N., Tahir I., 2019 [Study of suitability, carrying capacity and ecotourism activities in the mangrove area of Tuada Village, Jailolo District, West Halmahera Regency]. *Jurnal Enggano* 4(2):222-242. [In Indonesian].
- Apriana D. S., Milla D., 2017 [Potential utilization of the coastal ecosystem of Labuhan Haji, East Lombok as an ecotourism area]. *Jurnal Biologi Tropis* 17(1):15-22. [In Indonesian].
- Arini D. I. D., Shabri S., Kafiar Y., Tabba S., Kama H., 2011 [Avifauna diversity of some conservation areas of North Sulawesi and Gorontalo provinces]. Manado Forestry Research Institute, Forestry Research and Development Agency of Indonesian Ministry of Forestry, 74 p. [In Indonesian].
- Asan S. A., Anwari M. S., Rifanjani S., Darwati H., 2019 [Diversity of fish species in the Kakap River mangrove area, Kubu Raya Regency, West Kalimantan Province]. *Jurnal Hutan Lestari* 7(1):279-286. [In Indonesian].
- Dharma B., 2005 Recent & fossil Indonesian shells. ConchBooks, Ikrar Mandiriabadi, Jakarta, 424 p.
- Djamaluddin R., Benjamin B., Roy R. L., 2019a The practice of hydrological restoration to rehabilitate abandoned shrimp ponds in Bunaken National Park, North Sulawesi, Indonesia. *Biodiversitas* 20(1):160-170.
- Djamaluddin R., Kaumbo M. A., Djabar B., 2019b [Present condition of mangrove environments and community structure in Tomini Bay, Sulawesi, Indonesia]. *Jurnal Ilmu dan Teknologi Kelautan Tropis* 11(3):601-614. [In Indonesian].
- Djamaludin R., 2018 [Mangrove biology, ecology, rehabilitation and conservation]. Unsrat Press, 238 p. [In Indonesian].
- Djunaidi S., Salam A., Juliana, 2020 Ecotourism potential study island mangroves Ponelo North District Gorontalo. *International Journal of Innovative Science and Research Technology* 5(1):266-277.

Commented [u33]: if you delete the section with the citation, please delete this too

Commented [u34]: please check the spelling; there are 2 d in the text citation

- English S., Wilkinson C., Baker V., 1997 Survey manual for tropical marine resources. 2nd Edition, Australian Institute of Marine Science, Townsville, 390 p.
- Fisu A. A., Ahma A., Hidayat A., Marzaman L. U., 2020 Potential of mangrove ecosystem as a tourism object development in Kaledupa Island. *EduTourism Journal of Tourism Research* 2(1):11-17.
- Fitriana D., Johan Y., Renta P. P., 2016 [Analysis of the suitability of mangrove ecotourism in Kahyapu Village, Enggano Island]. *Jurnal Enggano* 1(2):64-73. [In Indonesian].
- Gigovic L., Pamucar D., Lukic D., Markovic S., 2016 GIS-Fuzzy DEMATEL MCDA model for the evaluation of the sites for ecotourism development: a case study of "Dunavski kljuc" region, Serbia. *Land Use Policy* 58:348-365.
- Hakim L., Siswanto D., Nakagoshi N., 2017 Mangrove conservation in East Java: The ecotourism development perspectives. *The Journal of Tropical Life Science* 7(3):277-285.
- Hanjar, Nitibaskara T. U., Iskandar S., 2016 [Population and daily activity patterns of water lizards (*Varanus salvator*) in Marine Protected Areas on Biawak Island, Indramayu]. *Jurnal Nusa Sylva* 16(1):18-23. [In Indonesian].
- Hutchison J., Spalding M., Ermgassen P. Z., 2014 The role of mangroves in fisheries enhancement. *The Nature Conservancy and Wetlands International*, 54 p.
- Iskandar A. O. T., Schaduw J. N. W., Rumampuk N. D. C., Sondak C. F. A., Warouw V., Rondonuwu A., 2019 [Study of land suitability for mangrove ecotourism in Arakan Village, Minahasa Selatan Regency, North Sulawesi]. *Jurnal Pesisir dan Laut Tropis* 7(1):40-52. [In Indonesian].
- Iswahyudi, Kusmana C., Hidayat A., Noorachmat B. P., 2019 [Evaluation of land suitability for mangrove forest rehabilitation in Langsa City, Aceh]. *Jurnal Matematika, Sains, dan Teknologi* 20(1):45-56. [In Indonesian].
- Kordi M. G. H., 2011 [Marine commodities for local consumption and export]. Lily Publisher. Yogyakarta, Indonesia, 348 p. [In Indonesian].
- Koroy K., Yulianda F., Bute N. A., 2017 [Development of marine ecotourism based on small islands resources in Sayafi and Liwo Islands, Central Halmahera Regency]. *Jurnal Ilmu Kelautan Universitas Pasifik Morotai* 8(1):1-17. [In Indonesian].
- Krisnawati Y., Arthana I. W., Dewi A. P. W. K., 2018 [Variation in morphology and abundance of crab *Uca* spp. in mangrove area, Tuban-Bali]. *Journal of Marine and Aquatic Sciences* 4(2):236-243. [In Indonesian].
- Kusmana C., Istomo, Purwanegara T., 2014 [Guludan technique as a solution for mangrove planting methods in deep waterlogged area]. *Risalah Kebijakan Pertanian dan Lingkungan* 1(3):165-171. [In Indonesian].
- Kusmana C., Setyobudiandi I., Hariyadi S., Sembiring A., 2015 [Sampling and bioecological analysis of coastal and marine biological resources]. IPB Press, 351 p. [In Indonesian].
- Lasabuda R., Lohoo A. V., Opa E. T., 2019 Ecological suitability of mangrove ecotourism in Labuan Uki Bay, Bolaang Mongondow Regency, North Sulawesi Province, Indonesia. *AES Bioflux* 11(1):41-50.
- Malik A., Rahim A., Sideng U., Rasyid, A., Jumaddin J., 2019 Biodiversity assessment of mangrove vegetation for the sustainability of ecotourism in West Sulawesi, Indonesia. *AAEL Bioflux* 12(4):1458-1466.
- Mukhtar E., Raynaldo A., Novarino W., 2021 Carbon stock mapping using mangrove discrimination indices in Mandeh Bay, West Sumatra. *AAEL Bioflux* 14(1):430-440.
- Murtini S., 2017 [The suitability and carrying capacity of the Wonorejo mangrove ecotourism area, Surabaya City]. *Proceedings of the National Seminar Geographical Education, Fish Unesa, Management of Indonesia's Maritime Potential*, pp. 220-227. [In Indonesian].
- Noor Y. S., Khazali M., Suryadiputra I. N. N., 2012 [Field guide to Indonesia mangroves]. *Wetland International Indonesia Programme*, Bogor, Indonesia, 220 p. [In Indonesian].
- Nugroho T. S., Fahrudin A., Yulianda F., Bengen D. G., 2018 [Analysis of land suitability and carrying capacity of mangrove ecotourism in the Muara Kubu mangrove area,

- West Kalimantan]. *Journal of Natural Resources and Environmental Management* 9(2):483-497. [In Indonesian].
- Opa E. T., Kepel R. C., Lasabuda R., Kusen J. D., Paruntu C. P., Djamaluddin R., Boneka F. B., Mantiri D. M. H., 2021 Ecological suitability of mangrove tourism in Mantehage Island as the outermost small island in North Sulawesi, Indonesia. *AACL Bioflux* 14(1):120-129.
- Peristiwady T., 2006 [Fish-economically important marine fish in Indonesia. Identification Manual]. LIPI Press, Jakarta, 270 p. [In Indonesian].
- Rahayu S. M., Wiryanto, Sunarto, 2017 [Diversity of crustacean species in the mangrove area, Purworejo Regency, Central Java]. *Jurnal Sains Dasar* 6(1):57-65. [In Indonesian].
- Rini I., Setyobudiandi M., Kamal M., 2018 [Study of suitability, carrying capacity and ecotourism activities in the Lantebung mangrove area, Makassar City]. *Jurnal Pariwisata* 5(1):1-10. [In Indonesian].
- Rodiana L., Yulianda F., Sulistiono, 2019 [Study of suitability, carrying capacity and ecotourism activities in the Lantebung mangrove area, Makassar City]. *Journal of Fisheries and Marine Research* 3(2):194-205. [In Indonesian].
- Sadikin P. N., Arifin H. S., Pramudya B., Mulatsih S., 2017 Carrying capacity to preserve biodiversity on ecotourism in Mount Rinjani National Park, Indonesia. *Biodiversity* 18(3):978-989.
- Salim T., Maulany R.I., Barkey R. A., 2018 [Strategy for development of Tongke-Tongke mangrove ecotourism in Sinjai Regency]. *Jurnal Hutan dan Masyarakat* 10(2):268-282. [In Indonesian].
- Sari S. M., 2012 [Birds of mangrove forest]. PT Bina Ovivipari Semesta, Pontianak, Indonesia, 19 p. [In Indonesian].
- Saru A., 2013 [Unlocking the potential of green gold in coastal areas]. Masagena Press Makassar, Indonesia, 76 p. [In Indonesian].
- Setiyaningrum I. F., Harini R., Wirasanti N., 2020 [Community-based mangrove ecotourism management: a case study in Gedangan Village, Purwodadi Purworejo, Central Java Indonesia]. *Majalah Geografi Indonesia* 34(1):11-18. [In Indonesian].
- Sugiyono, 2014 [Educational research methods with quantitative, qualitative, and R & D approach]. Alfabeta, Bandung, Indonesia, 456 p. [In Indonesian].
- Sulistiono, Riani E., Asriansyah A., Walidi W., Tani D. D., Arta A. P., Retnoningsih S., Anggraeni Y., Ferdiansyah R., Wistati A., Rahayuningsih E., Panjaitan A. O., Supardan A., 2016 [Guidelines for inspection/identification of restricted fish species (mangrove crab/*Scylla* spp.)]. Center for Fish Quarantine and Biosafety Fish Quarantine Agency, Quality Control and Safety of Fishery Products, Indonesian Ministry of Marine and Fisheries Affairs, Jakarta, 34 p. [In Indonesian].
- Tefarani R., Nana K. T. M., Sri N., 2019 [Mangrove species diversity and zoning in Mangunharjo Village, Tugu District, Semarang City]. *Jurnal Life Science* 8(1):41-53. [In Indonesian].
- Tuwo A., 2011 [Coastal and marine ecotourism management: ecological, socio-economic, institutional and regional facilities approaches]. Brillan Internasional, Surabaya, 412 p. [In Indonesian].
- Vincentius A., Nessa M. N., Jompa J., Saru A., Nurdin N., Rani C., 2018 Influential factors analysis towards mangrove cover and production of demersal fish in Maumere Bay, Indonesia. *AACL Bioflux* 11(3):810-822.
- Wardhani M. K., 2011 [Mangrove conservation area: an ecotourism potential]. *Jurnal Kelautan* 4(1):60-76. [In Indonesian].
- Winata A., Yuliana E., Hewindati Y. T., Djatmiko W. A., 2020 Assessment of mangrove carrying capacity for ecotourism in Kemujan Island, Karimunjawa National Park, Indonesia. *AES Bioflux* 12(1):83-96.
- Yanti D. I. W., Paruntu C. P., Kepel R. C., Mandagi S. V., Tabalessy R. R., Masengi M. C., 2021 Suitability index and carrying capacity of mangrove tourism on Jeflio Island, Indonesia. *AACL Bioflux* 14(5):3145-3156.
- Yulianda F., 2019 [Aquatic ecotourism: a concept of suitability and carrying capacity of marine and freshwater tourism]. IPB Press, 87 p. [In Indonesian].

Yulianda F., Atmadipoera A. S., 2019 [Supporting capacity and ecotourism management plan for marine protected areas, a case model of Seribu Islands National Park]. IPB Press, 87 p. [In Indonesian].

Received: 14 August 2022. Accepted: 29 September 2022. Published online: xx November/December 2022.

Authors:

Salim Abubakar, Khairun University, Faculty of Fisheries and Marine Science Unkhair, Kampus II Jl. Jusuf Abdulrahman, 97719 Ternate, North Maluku, Indonesia, e-mail: mylasrinaldy@gmail.com
Rene Charles Kepel, Sam Ratulangi University, Faculty of Fisheries and Marine Science Unsrat, Kampus Unsrat Bahu, 95115 Manado, North Sulawesi, Indonesia, e-mail: renecharleskepel65@gmail.com
Rignolda Djamaluddin, Sam Ratulangi University, Faculty of Fisheries and Marine Science Unsrat, Kampus Unsrat Bahu, 95115 Manado, North Sulawesi, Indonesia, e-mail: rignolda@unsrat.ac.id
Nurhalis Wahidin, Khairun University, Faculty of Fisheries and Marine Science Unkhair, Kampus II Jl. Jusuf Abdulrahman, 97719 Ternate, North Maluku, Indonesia, e-mail: nurhalisw@gmail.com
Winda Mercedes Mingkid, Sam Ratulangi University, Faculty of Fisheries and Marine Science Unsrat, Kampus Unsrat Bahu, 95115 Manado, North Sulawesi, Indonesia, e-mail: wmingkid@unsrat.ac.id
Adnan S. Wantasen, Sam Ratulangi University, Faculty of Fisheries and Marine Science Unsrat, Kampus Unsrat Bahu, 95115 Manado, North Sulawesi, Indonesia, e-mail: awantasen@unsrat.ac.id
Roike I. Momtolalu, Sam Ratulangi University, Faculty of Fisheries and Marine Science Unsrat, Kampus Unsrat Bahu, 95115 Manado, North Sulawesi, Indonesia, e-mail: montolalu@unsrat.ac.id
Desy Maria Helena Mantiri, Sam Ratulangi University, Faculty of Fisheries and Marine Science Unsrat, Kampus Unsrat Bahu, 95115 Manado, North Sulawesi, Indonesia, e-mail: dmh_mantiri@unsrat.ac.id

This is an open-access article distributed under the terms of the Creative Commons Attribution License, which permits unrestricted use, distribution and reproduction in any medium, provided the original author and source are credited.

How to cite this article:

Abubakar S., Kepel R. C., Djamaluddin R., Wahidin N., Mingkid W. M., Wantasen A. S., Momtolalu R. I., Mantiri D. M. H., 2022 2016 Suitability and carrying capacity of mangrove ecosystem for ecotourism in Jailolo Bay, West Halmahera, Indonesia. *AAFL Bioflux* 15(6):x

Commented [u35]: please add the street name and number

Commented [u36]: please add the street name and number

Commented [u37]: please add the street name and number

Commented [u38]: please add the street name and number

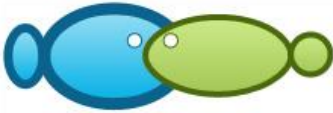
Commented [u39]: please write the full name here

Commented [u40]: please add the street name and number

Commented [u41]: please write the full name here

Commented [u42]: please add the street name and number

Commented [u43]: please add the street name and number



Suitability and carrying capacity of mangrove ecosystem for ecotourism in Jailolo Bay, West Halmahera, Indonesia

¹Salim Abubakar, ²Rene C. Kepel, ²Rignolda Djamaluddin, ¹Nurhalis Wahidin, ²Winda M. Mingkid, ²Adnan S. Wantasen, ²Roike I. Montolalu, ²Desy M. H. Mantiri

¹ Faculty of Fisheries and Marine Sciences, Khairun University, Ternate, North Maluku, Indonesia; ² Faculty of Fisheries and Marine Sciences, Sam Ratulangi University, Manado, Indonesia. Corresponding author: S. Abubakar, mylasrinaldy@gmail.com

Abstract. The mangrove ecosystem is a natural resource with the potential to be used as a tourist destination. Ecotourism is a form of responsible activity in pristine areas with the objectives of conserving or preserving the environment, while at the same time providing livelihoods for local residents and involving elements of education. This study aims to determine the suitability and carrying capacity of Jailolo Bay mangrove area for ecotourism. Mangrove data collection was carried out using the spot check method. Fish were collected using gill nets. Socio-economic data were obtained through interviews. The study found that Jailolo Bay mangroves are in the appropriate/feasible category for ecotourism development at five stations (villages of Guaimaadu, Gufasa, Gam Lamo, Porniti, Tuada, and Matui), while at one station (Guaria Village) the mangroves are in the less suitable (inappropriate) category. The area carrying capacity (ACC) for ecotourism activity of Jailolo Bay is 2632 people per day consisting of tracking activities (489 people per day), fishing (100 people per day), boating (1797 people per day), bird watching (59 people per day), picnic (175 people per day), and camping (15 people per day). The highest ecotourism ACC by station (village) was found at Matui Village, with 568 people per day, followed by Gam Lamo Village (488 people per day), Porniti Village (445 people per day), Tuada Village (441 people per day), and Gufasa Village (352 people per day), while the lowest AAC was found at Guaimaadu Village, with only 338 people per day.

Key Words: coastall ecosystem, management, North Maluku, tourism, tropical coastal.

Introduction. Ecologically, mangrove forests have functions in shoreline protection, climate change mitigation, potential tsunami threats reduction, erosion and abrasion control, seawater intrusion prevention, and providing various ecosystem services in forms of fisheries and forestry products (Djamaluddin et al 2019a; Winata et al 2020). Mangroves serve as spawning grounds, feeding grounds and nurseries for many species of fish, shellfish and crustaceans (Hutchison et al 2014). Mangrove ecosystem areas can also be used for fish and shrimp cultivation, fishing, and harvesting other natural products (Saru 2013; Apriana & Milla 2017; Vincentius et al 2018). The existence of mangrove forests appears to be an alternative habitat for wild animals (such as birds, bats, and monkeys), thus enriching the biodiversity of mangrove forests. This condition may be the basis for the development of mangrove ecotourism through bird-watching and other animal observation activities (Djamaluddin 2018).

The mangrove ecosystem is a natural resource that has the potential to be used as a tourism attraction. Utilization of mangrove areas can be developed with ecotourism-based activities, ecotourism being a form of educational tourism that focuses on human behavior in protecting the environment in a sustainable manner, also providing economic benefits and environmental services without exploiting mangroves extractively (Yanti et al 2021). Utilization of environmental services in the form of ecotourism will encourage

conservation of mangrove ecosystems as buffer areas for conservation areas. The use of mangroves for ecotourism is also in line with the shift in tourist interest from old tourism to new tourism, which manages and seeks ecotourism destinations that are specific, natural, and rich in biodiversity (Salim et al 2018).

Ecotourism activities are an effective alternative to overcome the problem of environmental damage to mangrove ecosystems due to excessive levels of exploitation by the community by creating economic alternatives for the community. Ecotourism can be seen as an economic alternative based on conservation, because it does not damage nature, is not extractive and does not have a negative impact on the environment. With the ecotourism model, the community can take advantage of the intact natural beauty, culture, and local history without destroying or selling its contents, so that it can have a positive impact in the form of economic improvement, conservation, environmental conservation, and empowerment of local communities (Nugroho et al 2018; Opa et al 2021). To reduce the negative impact on the environment caused by conventional (mass) tourism, the concept of ecotourism is increasingly important because it can contribute to environmental protection and sustainable development. Ecotourism can be a conservation strategy that can open up economic alternatives for the community (Fitriana et al 2016; Gigovic et al 2016).

Ecotourism is currently a good option in promoting an environment that maintains its natural condition as well as becoming a tourism destination. Ecotourism potential is an environmental development concept based on an approach to nature conservation and protection. Ecotourism is a form of responsible activity in pristine areas, with the aim of conserving or preserving the environment while providing livelihoods for local residents and involving elements of education (Koroy et al 2017; Lasabuda et al 2019).

Tourism is one of the important tools to improve and support environmental conservation, including mangrove ecosystems of the tropics. Tourism development in natural areas, including mangrove ecosystems is considered important. This is very relevant in relation to the Indonesian government's policy on tourism development. Mangroves are one of the potential sites for sustainable tourism development. Mangrove conditions are unique, with potential natural resources in the form of landscapes, flora, fauna and socio-economic activities as ecotourism objects and attractions (Hakim et al 2017; Fisu et al 2020). Tourism activities that will be developed should be adjusted to the potential of resources and their designation. Every tourism activity has resource and environmental requirements that are appropriate for the tourism object to be developed (Abubakar et al 2019). Ecotourism activities must be able to improve the social and economic welfare of the community. Therefore, before developing ecotourism, it is necessary to analyze the socio-economic conditions of the community in order to know the strengths and weaknesses that exist in the community and also need to be supported by facilities and infrastructure for a proper development (Tuwo 2011).

In developing a conservation area into a leading tourism destination, it is necessary to consider that tourism activities should not disrupt basic functions of the conservation area due to utilization that exceeds its carrying capacity. A higher number of tourists will decrease the tourism comforts. Meanwhile, the convenience factor has an important role for tourists enjoying a tourist location. By calculating the carrying capacity, managers can objectively limit the number of tourists when it has exceeded the maximum threshold. Carrying capacity is the maximum number of people who can visit a tourist attraction at the same time without causing physical, economic or socio-cultural damage and other effects that may reduce the quality of visitor satisfaction (Murtini 2017).

The carrying capacity of ecotourism is calculated using the concept of regional carrying capacity. The area carrying capacity (ACC) is the maximum number of visitors that can be physically accommodated in an area at a certain time without causing disturbance to nature and human environment (Yulianda 2019; Djunaidi et al 2020).

Jailolo Bay of West Halmahera Regency has abundant coastal and marine resources and is an estuary/tidal area with many rivers and straits, shaping it in the form of a fan. With a wide expanse (329.91 ha) of mangrove ecosystem and thickness (± 673.34 m), the Jailolo Bay area is a habitat for various types of animals such as birds, snakes, crocodiles, dugongs, and many others. Thickness represents the width of the mangrove forest,

represented by the distance from the coast to the limit of mangrove growth to the mainland. The advantages of the characteristics of natural resources owned by the mangrove ecosystem have the potential to be developed into ecotourism products, because ecotourism can be a conservation strategy that can open up economic alternatives for the community. The development of ecotourism business is aimed at optimally and sustainably increasing the economic, ecological and social benefits of various natural resources in the Jailolo Bay area for regional development progress and benefits of its community. With the ecotourism concept, it is hoped that the preservation of biological resources and the balance of the ecosystem can be realized, so that it can support efforts to improve the welfare and quality of life of the people around the Jailolo Bay area. This study aims to determine the suitability and carrying capacity of mangrove ecotourism in the Jailolo Bay area.

Material and Method

Research site. The research was conducted in Jailolo Bay, Jailolo District, West Halmahera Regency, covering 7 sampling stations (villages) namely the villages of Guaimaadu, Gufasa, Gam Lamo, Porniti, Tuada, Matui and Guaria (Figure 1). The research was carried out from March to April 2022.

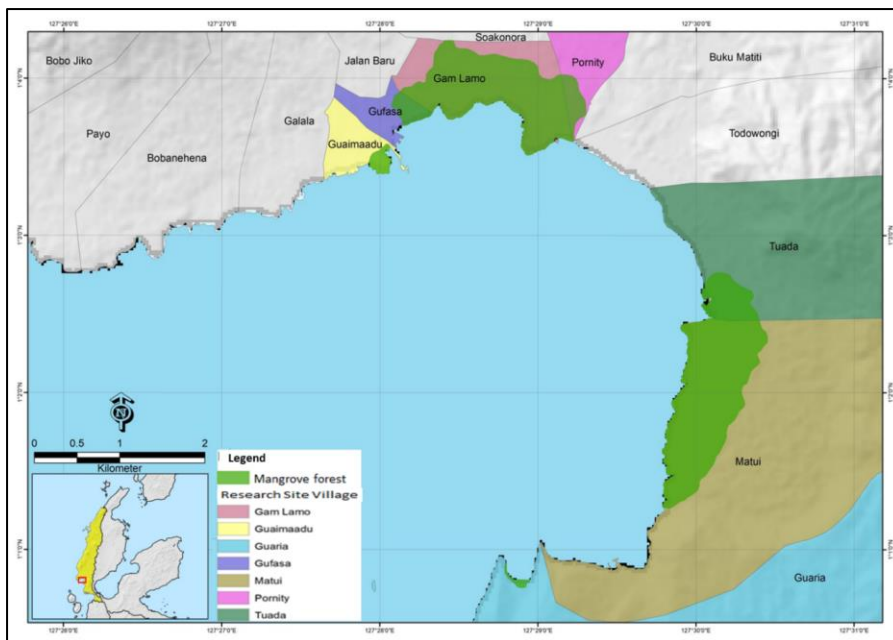


Figure 1. Research area in Jailolo Bay, North Maluku, Indonesia.

Ecotourism area suitability. Determination of the suitability of mangrove area for ecotourism was based on 3 criteria, namely ecology, socio-economic criteria and supporting criteria. Ecological aspects consisted of diversity and vegetation structure including mangrove thickness, mangrove cover, mangrove species, presence of fauna, area characteristics (substrate, inundation level), uniqueness, authenticity, and dangerous biota. Socio-economic aspects included public acceptance, public health, culture, education, security and employment. The supporting aspects included transportation accessibility, tourist facilities, markets, electricity, environmental sanitation (drinking

water sources, WC/toilet facilities, trash bins) and institutions (planning documents, coastal spatial planning, coastal and sea management regulations, law enforcement, cooperatives, local handy-crafts, and post-harvest processing).

Mangrove vegetation. Mangrove vegetation collection was carried out using the "spot check" method. Transects were drawn perpendicular from the coastline along the mangrove vegetation, 3 pieces per research station. Vegetation data retrieval was carried out using plots of 5 pieces per transect, with a size of 10x10 m for the tree category (diameter >4 cm), 5x5 m for the tiller category (diameter <4 cm, height >1 m) and 2x2 m for the category of seedlings (height <1 m) (English et al 1997; Kusmana et al 2015; Malik et al 2019; Mukhtar et al 2021; Opa et al 2021). Identification of mangrove plants was based on the guidelines of Noor et al (2012).

Types of biota. Fish and shrimp were collected using gill nets with a mesh size of 3-5 cm. The nets were placed in the front zone and operated at low tide, assuming that fish will exit the mangrove forest search for deeper areas (Abubakar et al 2019; Asan et al 2019). The fish caught were then identified based on the guide of Peristiwady (2006), while the species of shrimp were based on Kordi (2011) and Rahayu et al (2017). Molluscs were collected using the quadratic transects method. Molluscs were collected following a mangrove transect (10x10 m) drawn perpendicular from the shoreline to the mainland along the mangrove vegetation, and 4 sub-transects were made in each mangrove transect. The molluscs obtained were identified based on the instructions of Dharma (2005). Crabs were observed directly in the field and identified based on the instructions of Sulistiono et al (2016) and Krisnawati et al (2018). Observations of birds and reptiles were carried out in the morning and afternoon, between 07.00–09.00 and 14.00–18.00. Observations were carried out using binoculars. Observations were made in all areas based on information gathered from the community, such as locations or places to forage, mate, sleep, rest, and so on. Reptiles and birds observed were determined based on the instructions of Arini et al (2011), Sari (2012), and Hanjar et al (2016).

Area characteristics. The class of inundation of the mangrove ecosystem was measured based on the time period of the tide for 1 day using the Motowali (Mobile tide waffle level instrument) tool. The inundation class measurement was carried out to determine the frequency of tidal inundation that occurred during the day/month. Substrate sampling was done using an iron paralon pipe (PVC, 6 cm in diameter) at a depth of 0-30 cm (Djamaluddin 2018). 3 substrate samples were collected from each location based on the type of zoning, namely the front zone, middle zone and back zone. Each sample had a weight of 500 g. Determination of the type of texture was carried out at the Soil Mechanics Laboratory, Faculty of Engineering, Khairun University, Indonesia.

Interviews. Determination of the suitability of ecotourism from socio-economic and supporting criteria was obtained from public perception based on the Likert scale. The Likert scale was used to measure attitudes, opinions, and perceptions of a person or group of people about social phenomena (Sugiyono 2014). Scores were given for each choice using 4 categories, namely: strongly agree (SA), with a score of 4; agree (A), with a score of 3; fairly disagree (FD), with a score of 2; disagree, (D) with a score of 1. Local people were interviewed using census sampling. Census sampling is a sampling technique where all members of the population are used as samples. Interviews were conducted on people with the age of 25-65 years, so the number of respondents in each research location varies. The total number of respondents was 1006 persons spread across Guaimaadu Village (145 people), Gufasa Village (159 persons), Gam Lamo Village (150 persons), Porniti Village (165 persons), Tuada Village (159 persons), Matui Village (154 persons), and Guari Village (74 persons).

Data analysis

Mangrove tourism suitability. Analysis of the suitability of mangrove tourism for ecological criteria was carried out considering 9 parameters with 4 suitability group classifications, namely: very suitable (S1), suitable (S2), less suitable (S3) and not suitable (N) (Tuwo 2011). The matrix of land suitability for mangrove ecotourism is presented in Table 1.

The measurement of the thickness of the mangrove forest in Jailolo Bay is based on Sentinel 2A image data. The percentage of mangrove cover was mapped and calculated using high resolution aerial photography (drone mapping). Mangrove species are identified directly in the study area. The presence of fauna is reviewed directly at the study area. Uniqueness and natural conditions were obtained based on the guidelines used by adjusting to the study area. Substrate, inundation and harmful species information were obtained from the study area based on sampling.

Table 1

Mangrove ecotourism suitability matrix					
No	Parameters	Weight	Category	Score	Reference
1	Mangrove thickness	18	>500	3	Yulianda (2019)
			>200-500	2	
			50-200	1	
			<50	0	
2	Mangrove cover	18	>75%	3	Tuwo (2011)
			50-74.9%	2	
			25-49.9%	1	
			>5-24.9	0	
3	Mangrove species	15	≥7	3	Tuwo (2011)
			5-6	2	
			3-4	1	
			<3	0	
4	Presence of fauna	15	Fish, crustaceans, mollusks, reptiles, birds	3	Yulianda (2019)
			Fish, crustaceans, mollusks	2	
			Fish, crustaceans	1	
			One fauna	0	
5	Uniqueness	10	4 conditions	3	Tuwo (2011) Wardhani (2011) Abubakar et al (2019)
			3 conditions	2	
			2 conditions	1	
			1 conditions	0	
6	Natural condition	10	Natural	3	Tuwo (2011) Djamiluddin et al (2019b)
			Lightly disturbed	2	
			Fairly disturbed	1	
			Heavily disturbed	0	
7	Zone characteristics				
a	Substrate	5	Sand, silty sand, silt, and sandy silt	3	Tuwo (2011) Tefarani et al (2019)
			Sand, silty sand, silt	2	
			Sand, silty sand	1	
			Sand	0	
b	Level of inundation	5	Always flooded (1-2 times/day, at least 20 days/month)	3	Kusmana et al (2014) Iswahyudi et al (2019)
			10-19 days/month	2	
			9 days/month	1	
			Rarely flooded	0	
8	Harmful species	4	No harmful biota	3	Tuwo (2011); Noor et al (2012) Iskandar et al (2019)
			<2	2	
			2-3	1	
			>2	0	

Note: source - modified from Tuwo (2011).

The suitability of mangrove ecotourism uses the following formula (Yulianda 2007):

$$IKW = \sum \left[\frac{Ni}{Nmax} \right] \times 100\%$$

Where: IKW - ecosystem suitability index for mangrove ecotourism; Ni - value of the ⁱth parameter (weight x score); Nmax - maximum value of the ecotourism category (Nmax=300).

The criteria for socio-economic aspects and supporting scoring for mangrove ecotourism locations are presented in Table 2. The standard value for eligibility is presented in Table 3.

Table 2
Scoring criteria for social aspects supporting mangrove ecotourism

	<i>Parameter</i>	<i>Suitable condition</i>
<i>Social criteria</i>		
1	Community acceptance	Good
2	Community health	Good
3	Education	Good
4	Security/Safety	Safe
5	Employment	Good
<i>Supporting criteria</i>		
1	Accessibility	Accessible
2	Drinking water	Available

Note: source - Tuwo (2011).

Table 3
Eligibility standard value

<i>Suitability value (%)</i>	<i>Suitability category</i>	
81.26-100	Very suitable	Very good
62.52-81.25	Suitable	Good
43.76-62.5	Less suitable	Fairly good
25-43.75	Not suitable	Bad

Note: source - Tuwo (2011).

Mangrove ecotourism supporting capacity. The ACC analysis was carried out only at research stations that had categories suitable for the development of mangrove ecotourism. ACC analysis is based on the ecological potential of the resource conditions of each research station to determine the type of activity to be developed. Furthermore, the area that can be used for each type of activity (Lp), the time of tourist activities based on the length of time spent by tourists doing tourism activities (WP), and the time of tourists are calculated with the time provided for the area (Wt).

The analysis of the carrying capacity of mangrove ecotourism used the Regional Carrying Capacity (DDK) approach. DDK represents the maximum number of visitors that can be physically accommodated in the area at a certain time without causing disturbance to nature and humans. DDK calculation uses the following formula (Yulianda 2019):

$$DDK = K \times \frac{Lp}{Lt} \times \frac{Wt}{Wp}$$

Where: DDK - regional carrying capacity (person/day); K - ecological potential of visitors per unit area (person); Lp - area/length of area that can be utilized (m or m²); Lt - unit area for a certain category (m or m²); Wt - time provided by the area for tourism activities in one day (hours); Wp - time spent by visitors for each particular activity (hours).

The ecological potential of visitors is determined by the condition of the resources and the type of activities developed. The area used by visitors must pay attention to the

ability of nature to tolerate visitor activities, so that authenticity is maintained. Visitor activity time (Wp) is calculated based on the length of time visitors spend traveling. Visitor time is calculated with the time provided by the area (Wt), which is the length of time the area is opened in one day for tourism activities (Table 4).

Table 4

Ecological potential of visitors (K), area of activity (Lt), visit duration (Wp), and time provided by the tourist attraction (Wt)

No	Type of activity	K (Σ visitors)	Area unit (Lt)	Visit duration Wp (hours)	Total time for 1 day Wt (hours)
1	Tracking	1	50 m	2	8
2	Fishing	1	25 m	3	6
3	Canoeing	6	50 m	1	8
4	Bird watching	1	64 m ²	2	8
5	Picnic	1	16 m ²	2	8
6	Camping	4	400 m ²	24	24

Note: modified from Yulianda & Atmadipoera (2019) and Winata et al (2020).

Results and Discussion

Ecological suitability. Ecological suitability includes mangrove thickness, mangrove cover, mangrove species, presence of fauna, uniqueness, natural condition (authenticity), area characteristics (substrate, level of inundation) and hazardous biota.

Mangrove forest thickness. The highest mangrove forest thickness was in Matui Village with a thickness of 1776.3 m, followed by Gam Lamo Village (1430.3 m), Porniti Village (542.4 m), Tuada Village (486.3 m) and Guaimaadu Village (296.2 m). The lowest thickness was observed in Gufasa Village (90.9 m) and Guaria Village (90.9 m). Based on the ecotourism suitability matrix, the stations that have a score of 3 are Gam Lamo Village, Porniti Village and Matui Village, a score of 2 was obtained by Guaimaadu Village and Tuada Village, and a score of 1 by Gufasa Village and Guaria Village. This means that from the mangrove thickness parameter perspective, Gam Lamo Village, Porniti Village and Matui Village are very suitable for ecotourism, Guaimaadu Village and Tuada Village are suitable for ecotourism and Gufasa and Guaria villages are not suitable for ecotourism. The parameter of mangrove thickness in the development of mangrove ecotourism functions on mangrove tracking activities and affects the carrying capacity of the area to accommodate visitors. Physically, the thickness of the mangroves functions as a breakwater and producer of litter (helping mangrove and plankton growth), which can increase diversity, number of individuals, and number of associated organisms (Rodiana et al 2019).

Mangrove cover. The data obtained showed that mangrove cover at Matui Village was highest, with a percentage of 78.72%, followed by Gufasa Village (76.39%), Tuada Village (75.30%), Porniti Village (69.81%), Gam Lamo Village (69.33%) and Guaimaadu Village (67.14% m). The lowest mangrove cover was in Guaria Village, with a percentage of 39%. Based on the ecotourism suitability matrix, stations that have a score of 3 are Matui Village, Gufasa Village and Tuada Village, a score of 2 was obtained by Porniti Village, Gam Lamo Village and Guaimaadu Village and a score of 1 by Guaria Village. This means that from the mangrove cover parameter perspective, Matui Village, Gufasa Village and Tuada Village are very suitable for ecotourism, Porniti Village, Gam Lamo Village and Guaimaadu Village are suitable for ecotourism and Guaria Village is not suitable for ecotourism. In terms of ecotourism, mangrove cover is related to the convenience of tourists in tourism activities along the mangrove area by boat or tracking route. The lush mangroves create a cooling impression and attract visitors.

Mangrove type. The composition of mangroves found in Jailolo Bay presented 12 families with 21 species, consisting of 18 major true mangrove species and 3 minor true mangrove species. Major true mangroves consisted of 10 families, namely the Rhizophoraceae family (*Rhizophora apiculata*, *R. stylosa*, *R. mucronata*, *Bruguiera gymnorrhiza*, *B. parviflora*, *Ceriops decandra*, *C. tagal*), Sonneratiaceae (*Sonneratia alba*), Avicenniaceae (*Avicennia alba*, *A. marina*, *A. lanata*), Myrsinaceae (*Aegiceras corniculatum*), Meliaceae (*Xylocarpus granatum*, *X. moluccensis*), Sterculiaceae (*Heritiera littoralis*), Combretaceae (*Lumnitzera littorea*), Rubiaceae (*Scyphiphora hydrophyllacea*), Arecaceae (*Nypa fruticans*) and Eliphorbiaceae (*Excoecaria agallocha*). While for true minor mangroves, it consisted of 2 families, namely Acanthaceae (*Acanthus ilicifolius*) and Pteridaceae (*Acrostichum aureum*, *A. speciosum*). The highest number of mangrove species was found in Porniti Village, with 13 species, followed by Tuada Village (12 species), Gam Lamo Village and Matui Village (11 species each), Guaria Village (10 species) and Gufasa Village (8 species). The lowest number of mangroves species was found in Guaimaadu Village, with only 5 species. Based on the ecotourism suitability matrix, the research stations that obtained a score of 3 were Gufasa, Gam Lamo, Porniti, Tuada, Matui and Guaria villages, while Guaimaadu Village had a score of 2. This means that, based on mangrove species number, 6 research stations (Gufasa, Gam Lamo, Porniti, Tuada, Matui, Guaria) were very suitable for ecotourism, while Guaimaadu Village was suitable for ecotourism. Yulianda (2019) stated that mangrove species diversity has visual and comfort values for ecotourism visitors.

Presence of fauna. The composition of fauna obtained in all research stations presents aquatic fauna/biota and terrestrial fauna. Fauna/biota includes molluscs, fish, crustaceans (crabs, prawns), birds and reptiles (monitor lizards, crocodiles), which all live and associate in the mangrove ecosystem. Based on the ecotourism suitability matrix, all research stations have a score of 3. This means that, from the perspective of mangrove fauna, all stations are very suitable for ecotourism. The diversity of biota adds to the attractiveness value of mangrove habitats (Sadikin et al 2017; Djamaluddin 2018; Yulianda 2019).

Area characteristics. Characteristics of the area include substrate and level of inundation. The level of inundation shows that all research stations are in the class "always flooded", because all research stations have homogeneous area characteristics such as salinity content, tidal period (length of inundation), soil texture type and land slope. The research location has a mixed semi-diurnal type (two high tides and two low tides), which is characterized by two high tides and two low tides in a day, which are almost the same height as the flat slope, so that the mangrove forest area has a wide tidal period. The water level and the frequency of sea tides can determine tourist comfort (Yulianda 2019). Inundation class "always flooded" has a salinity of 10-30 ppt and a tidal frequency with permanent inundation (1-2 times/day, minimum 20 days/month) (Kusmana et al 2014). The soil texture of this class is represented by corals, sandy and sandy muddy substrates. The tidal period is usually 6 hours (Iswhayudi et al 2019). The land slope is relatively flat (Matatula et al 2018). The range of the slope of the flat slope = 0-3% (Kalay et al 2018). Types of textures Guaimaadu Village has are clay and sandy mud, Gufasa Village has clay, sandy mud and sandy clay textures, Gam Lamo Village has clay, clay-mud, sandy mud, sandy-clay textures, Porniti Village has muddy sand, clay-mud and sandy mud, Tuada Village has clay, sandy mud and sandy clay, Matui Village presents clay, sandy mud, sandy-clay, muddy sand and mud, and Guaria Village presents clay, sandy mud and argillaceous mud substrate textures. Based on the suitability matrix for mangrove ecotourism, all research stations have a score of 3. This means that the substrate parameters are very suitable for ecotourism. Substrate (hard, soft, sandy/muddy) is appropriate for the area to be used as a mangrove tourism location (Tuwo 2011), so that edu-tourism-based mangrove tourism activities can be developed (Setiyaningrum et al 2020). The type of substrate such as sand, muddy sand, clay and sandy mud is one of the factors that determine the growth of different species of mangroves (Tefarani et al 2019).

Uniqueness. The characteristics of the mangrove ecosystem area in all research stations have interesting objects, flora, fauna, and physical aspects. The flora consists of true and

untrue mangroves. Fauna/biota consists of molluscs, fish, crustaceans (crabs, shrimp) birds, and reptiles (monitor lizards, crocodiles). A uniqueness character in the villages Porniti, Tuada, and Guaeria is the white sandy beaches. Matui Village beach conditions are dominated by muddy sand and partly rocky. Meanwhile, the villages Guaimaadu, Gufasa and Gam Lamo have muddy beaches because the area is protected by mangrove forests. Villages that have coral reefs are Guaeria and Tuada. Between Matui and Tuada villages, coral reefs are at the front of the coastal waters, are visible at low tide, naturally functioning as a barrier and breakwater and preventing coastal abrasion. In addition, the location of this study is dominated by seagrass beds in coastal waters, which function as sediment traps. Based on the suitability matrix of mangrove ecotourism for the uniqueness parameter, all research stations have a score of 2. This means that the uniqueness parameter is suitable for ecotourism. The uniqueness is based on 4 considerations, namely: 1) the existence of interesting objects, both flora and fauna; 2) there is a panorama or natural beauty, which has a certain appeal; 3) nice landscape; 4) rare/protected animals and plants (Wardhani 2011; Abubakar et al 2019).

Natural condition (authenticity). The authenticity of the mangrove area is characterized by the natural condition of the area, which has not been disturbed. There are 5 types of land use in Jailolo Bay: ponds, settlements, roads, ports, livestock. The pond land conversions are located in Gufasa Village, Gam Lamo Village, Porniti Village and Tuada Village. Land clearing for ponds occurs in the village of Porniti, covering an area of ±1 ha. The ponds in Gufasa Village and Gam Lamo Village are no longer used, and have an area of ±1 ha. In Tuada Village, between 2019-2022, there was a conversion of 2 ha of mangrove land. Village area land conversion is found in all villages in Jailolo Bay. Meanwhile, the conversion of roads and ports exists in Guaria Village and Guaimaadu Village. The conversion of livestock land is found in Guaimaadu Village. Based on the suitability matrix of mangrove ecotourism for the authenticity parameter, the research stations have a score of 0. This means that, from the authenticity parameter perspective, all research stations are not suitable for ecotourism. The level of disturbance consists of mild (<5 trees), very light (5-25 trees), moderate (25-50 trees), severe (50-70 trees), very heavy disturbance (>75 trees) (Djamiluddin et al 2019b). The level of disturbance represents the intensity of anthropogenic activities; the diameter of trees is a measure of how successful is the growth of the mangrove and, thus, how disturbed is the area.

Harmful biota. All research stations have harmful biota, namely crocodile (*Crocodylus porosus*). Based on the suitability matrix of mangrove ecotourism, the research stations have a score of 2. It means that from the perspective of dangerous biota, all research stations are suitable for ecotourism. There are some tourists who like dangerous biota, so it can become an ecotourism attraction. However, there must be management efforts to ensure safety in tourism objects in order to create a sense of security, comfort and safety for tourists.

The results of the analysis of the mangrove ecotourism suitability, characterized by IKW value are presented in Table 5.

Table 5
Mangrove ecosystem suitability index for tourism (IKW) in Jailolo Bay

Village	IKW (%)	Valuation category
Guaimaadu	68.33	Suitable
Gufasa	73.33	Suitable
Gam Lamo	79.33	Suitable
Porniti	79.33	Suitable
Tuada	79.33	Suitable
Matui	85.33	Suitable
Guaria	61.33	Less suitable

Socio-economic suitability. Socio-economic suitability was based on several aspects, namely: perceptions of public acceptance, public health, culture, education, security and employment. The results of the suitability analysis of the socio-economic aspects of the community towards the development of mangrove ecotourism in Jailolo Bay are generally in good category (Table 6).

Table 6
Aspects of community socio-economic feasibility of mangrove ecotourism development in Jailolo Bay

No	Socio-economic suitability	Research station (village)						
		Guaimaadu	Gufasa	Gam Lamo	Porniti	Tuada	Matui	Guaria
1	Community acceptance	85.48	82.21	82.63	81.59	81.03	79.37	68.22
2	Community health	89.90	87.41	79.82	80.45	68.82	75.02	73.91
3	Culture	62.02	74.02	75.00	68.84	68.99	70.24	60.66
4	Education	77.20	76.72	71.91	64.46	62.34	62.19	55.50
5	Security	78.78	85.81	81.80	87.99	62.80	76.74	66.23
6	Employment	61.98	62.40	62.48	62.46	61.71	60.34	61.17
		75.89	78.10	75.61	74.30	67.62	70.65	64.28
	Valuation category	Good	Good	Good	Good	Good	Good	Good

Note: IKW - mangrove ecosystem suitability index for tourism.

Supporting aspects suitability. Ecotourism development needs to be supported by facilities and infrastructure. The results of the feasibility analysis of supporting aspects for the development of mangrove ecotourism in Jailolo Bay are generally good in villages Guaimaadu, Gufasa, Gam Lama, Porniti and not good (fairly good) in the other three villages (Tuada, Matui, Guari) (Table 7).

Table 7
Feasibility of supporting aspects for mangrove ecotourism development in Jailolo Bay

No	Supporting aspects suitability	Research station (village)						
		Guaimaadu	Gufasa	Gam Lamo	Porniti	Tuada	Matui	Guaria
1	Infrastructure	80.96	82.11	75.27	69.48	67.00	63.30	55.64
2	Institutional aspect	60.36	60.36	60.36	61.28	61.28	61.28	60.36
3	Sanitation	84.26	85.33	84.42	82.21	49.92	49.76	36.86
	IKW	75.19	75.93	73.35	70.99	59.40	58.11	50.95
	Valuation category	Good	Good	Good	Good	Not good	Not good	Not good

Note: IKW - mangrove ecosystem suitability index for tourism.

Mangrove ecotourism area suitability. According to the results of the analysis of the three criteria for developing mangrove ecotourism in Jailolo Bay, namely ecological, socio-economic and supporting criteria, the development of mangrove ecotourism in Jailolo Bay is in the appropriate/suitable category for five stations/villages (Guaimaadu, Gufasa, Gam Lamo, Porniti, Tuada, Matui), while Guaria Village is categorized as less suitable/less feasible (Table 8).

Table 8
Feasibility of mangrove ecotourism development in Jailolo Bay

Village	Criteria									IKW (%)	Valuation category
	Ecological			Socio-economic			Supporting				
	Score	Weight	S x W	Score	Weight	S x W	Score	Weight	S x W		
Guaimaadu	68.33	0.31	21.28	75.89	0.35	26.25	75.19	0.34	25.77	73.30	Suitable
Gufasa	73.33	0.32	23.62	78.10	0.34	26.79	76.24	0.33	25.53	75.94	Suitable
Gam Lamo	79.33	0.35	27.53	75.61	0.33	25.01	73.66	0.32	23.73	76.27	Suitable
Porniti	79.33	0.35	28.02	74.30	0.33	24.58	70.99	0.32	22.44	75.03	Suitable
Tuada	79.33	0.38	30.50	67.62	0.33	22.16	59.40	0.29	17.10	69.76	Suitable
Matui	85.33	0.40	34.01	70.65	0.33	23.31	58.11	0.27	15.77	73.10	Suitable
Guaria	61.33	0.35	21.27	64.28	0.36	23.36	51.26	0.29	14.86	59.49	Less suitable

Note: IKW - mangrove ecosystem suitability index for tourism; S - score; W - weight.

Guaria Village is not suitable for developing its mangrove ecosystem as an ecotourism area because, from the ecological aspect, the mangrove ecosystem has mangrove thickness loss (90.9 m), land is now converted into settlements and roads, and the mangrove cover is low (39%). Furthermore, the village does not have a good condition of culture, education, and employment. Guaria Village does not have a culture that can be used as an attraction for tourists (such as ritual events, types of artistic and cultural attractions, and art studios). Its educational facilities are minimal, namely there are only elementary schools, so that in the process of accessing higher education, people have to travel by sea every day because there is no road yet. In terms of employment, the community generally has a livelihood as farmers and fishermen. Meanwhile, from the supporting aspects in the form of inadequate transportation facilities, the village has poor environmental sanitation because it gets clean water from wells and rainwater. Toilet facilities are not yet feasible. Lastly, littering is common on the beach.

Carrying capacity of mangrove ecotourism areas. Based on the observations, the types of activities that can be developed in mangrove ecotourism in Jailolo Bay are tracking, fishing, boating, bird watching, picnics and camping. Calculated ACC for mangrove ecotourism at Jailolo Bay was 2634 persons per day consisting of tracking activities (488 persons per day), fishing (100 persons per day), boating (1797 persons per day), bird watching (59 persons per day), picnic (175 persons per day) and camping (15 persons per day). The highest ACC was in Matui Village, with 568 people per day, followed by Gam Lamo Village (488 people per day), Porniti Village (446 people per day), Tuada Village (442 people per day) and Gufasa Village (352 people per day), while the lowest ACC was found in Guaimaadu Village, 338 people per day. This number indicates that there is a limitation on the number of visitors, which is intended to reduce the negative impact on the area.

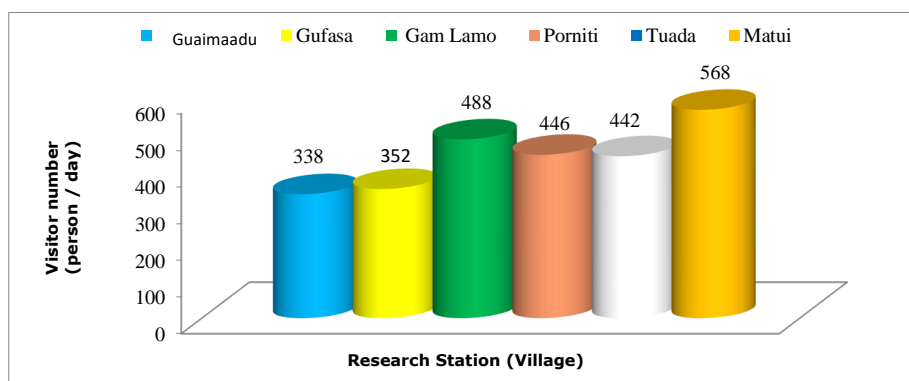


Figure 2. Carrying capacity of mangrove ecotourism areas in Jailolo Bay.

The difference in the number of visitors based on the ACC value was influenced by the difference in the number of types of activities and the area that will be developed for each research station. The high value of ACC in Matui Village was related to its bigger mangrove area of 149.98 ha, mangrove thickness of 1776.35 m, and diverse ecological potential characteristics. Matui Village has good potentials to develop all 6 types of tourism activities. Meanwhile, Guaria Village has a lower ACC value because it only has an area of 1.73 ha, with a thickness of 90.95 m, so that only 4 types of activities can be developed, namely tracking, fishing, boating and bird watching. The ecological potential of visitors (K) per unit area for all types of mangrove tourism activities is 1 person. Unit area (Lt) for the categories of tracking is 50 m, for fishing it is 25 m, boating 500 m, bird watching 67 m,

Commented [P44]: we feel this image needs to be included in the text for the purposes of presentation and information easier.

Commented [u45R44]: then please correct in the figure Guaimaadu instead of Guaemaadu

picnic 16 m and camping 100 m. The time spent by visitors for each activity (Wp) consists of 2 h for tracking, 3 h for fishing, 1 h for boating, 2 h for bird watching, 2 h for picnic and 24 h for camping (Yulianda & Atmadipoera 2019; Winata et al 2020). With the concept of carrying capacity, it is hoped that the use of ecotourism will be able to prevent damage to natural resources and the environment. Efforts to manage natural resources and the environment in a sustainable manner can be carried out, while still considering the welfare of local communities who use the resources. The carrying capacity of the area of a tourist attraction should be considered in the development of a tourist attraction. The carrying capacity of the area is developed to reduce the impacts of tourism activities on environmental degradation and to maintain the sustainability of tourism development (Rini et al 2018).

Conclusions. Mangrove ecotourism development in Jailolo Bay is in appropriate/suitable category for five stations (they are the villages of Guaimaadu, Gufasa, Gam Lamo, Porniti, Tuada, Matui), while Guaria Village is in less suitable/not-suitable category. The mangrove ecotourism area carrying capacity of Jailolo Bay is 2634 persons per day consisting of tracking activities (488 persons per day), fishing (100 persons per day), boating (1797 persons per day), bird watching (59 persons per day), picnic (175 persons per day), and camping (15 persons per day). The highest ACC was at Matui Village, with 568 persons per day, followed by Gam Lamo Village (488 persons per day), Porniti Village (446 persons per day), Tuada Village (442 persons per day) and Gufasa Village (358 persons per day), while the lowest DDK was found in Guaimaadu Village, with 338 persons per day.

Conflict of interests. The authors declare no conflict of interest.

References

- Abubakar S., Subur R., Darmawaty, Akbar N., Tahir I., 2019 [Study of suitability, carrying capacity and ecotourism activities in the mangrove area of Tuada Village, Jailolo District, West Halmahera Regency]. *Jurnal Enggano* 4(2):222-242. [In Indonesian].
- Apriana D. S., Milla D., 2017 [Potential utilization of the coastal ecosystem of Labuhan Haji, East Lombok as an ecotourism area]. *Jurnal Biologi Tropis* 17(1):15-22. [In Indonesian].
- Arini D. I. D., Shabri S., Kafiari Y., Tabba S., Kama H., 2011 [Avifauna diversity of some conservation areas of North Sulawesi and Gorontalo provinces]. Manado Forestry Research Institute, Forestry Research and Development Agency of Indonesian Ministry of Forestry, 74 p. [In Indonesian].
- Asan S. A., Anwari M. S., Rifanjani S., Darwati H., 2019 [Diversity of fish species in the Kakap River mangrove area, Kubu Raya Regency, West Kalimantan Province]. *Jurnal Hutan Lestari* 7(1):279-286. [In Indonesian].
- Dharma B., 2005 Recent & fossil Indonesian shells. ConchBooks, Ikrar Mandiriabadi, Jakarta, 424 p.
- Djamaluddin R., Benjamin B., Roy R. L., 2019a The practice of hydrological restoration to rehabilitate abandoned shrimp ponds in Bunaken National Park, North Sulawesi, Indonesia. *Biodiversitas* 20(1):160-170.
- Djamaluddin R., Kaumbo M. A., Djabar B., 2019b [Present condition of mangrove environments and community structure in Tomini Bay, Sulawesi, Indonesia]. *Jurnal Ilmu dan Teknologi Kelautan Tropis* 11(3):601-614. [In Indonesian].
- Djamaluddin R., 2018 [Mangrove biology, ecology, rehabilitation and conservation]. Unsrat Press, 238 p. [In Indonesian].
- Djunaidi S., Salam A., Juliana, 2020 Ecotourism potential study island mangroves Ponelo North District Gorontalo. *International Journal of Innovative Science and Research Technology* 5(1):266-277.
- English S., Wilkinson C., Baker V., 1997 Survey manual for tropical marine resources. 2nd Edition, Australian Institute of Marine Science, Townsville, 390 p.

- Fisu A. A., Ahma A., Hidayat A., Marzaman L. U., 2020 Potential of mangrove ecosystem as a tourism object development in Kaledupa Island. *Edutourism Journal of Tourism Research* 2(1):11-17.
- Fitriana D., Johan Y., Renta P. P., 2016 [Analysis of the suitability of mangrove ecotourism in Kahyapu Village, Enggano Island]. *Jurnal Enggano* 1(2):64-73. [In Indonesian].
- Gigovic L., Pamucar D., Lukic D., Markovic S., 2016 GIS-Fuzzy DEMATEL MCDA model for the evaluation of the sites for ecotourism development: a case study of "Dunavski kljuc" region, Serbia. *Land Use Policy* 58:348-365.
- Hakim L., Siswanto D., Nakagoshi N., 2017 Mangrove conservation in East Java: The ecotourism development perspectives. *The Journal of Tropical Life Science* 7(3):277-285.
- Hanjar, Nitibaskara T. U., Iskandar S., 2016 [Population and daily activity patterns of water lizards (*Varanus salvator*) in Marine Protected Areas on Biawak Island, Indramayu]. *Jurnal Nusa Sylva* 16(1):18-23. [In Indonesian].
- Hutchison J., Spalding M., Ermgassen P. Z., 2014 The role of mangroves in fisheries enhancement. *The Nature Conservancy and Wetlands International*, 54 p.
- Iskandar A. O. T., Schadu J. N. W., Rumampuk N. D. C., Sondak C. F. A., Warouw V., Rondonuwu A., 2019 [Study of land suitability for mangrove ecotourism in Arakan Village, Minahasa Selatan Regency, North Sulawesi]. *Jurnal Pesisir dan Laut Tropis* 7(1):40-52. [In Indonesian].
- Iswahyudi, Kusmana C., Hidayat A., Noorachmat B. P., 2019 [Evaluation of land suitability for mangrove forest rehabilitation in Langsa City, Aceh]. *Jurnal Matematika, Sains, dan Teknologi* 20(1):45-56. [In Indonesian].
- Kordi M. G. H., 2011 [Marine commodities for local consumption and export]. Lily Publisher. Yogyakarta, Indonesia, 348 p. [In Indonesian].
- Koroy K., Yulianda F., Bute N. A., 2017 [Development of marine ecotourism based on small islands resources in Sayafi and Liwo Islands, Central Halmahera Regency]. *Jurnal Ilmu Kelautan Universitas Pasifik Morotai* 8(1):1-17. [In Indonesian].
- Krisnawati Y., Arthana I. W., Dewi A. P. W. K., 2018 [Variation in morphology and abundance of crab *Uca* spp. in mangrove area, Tuban-Bali]. *Journal of Marine and Aquatic Sciences* 4(2):236-243. [In Indonesian].
- Kusmana C., Istomo, Purwanegara T., 2014 [Guludan technique as a solution for mangrove planting methods in deep waterlogged area]. *Risalah Kebijakan Pertanian dan Lingkungan* 1(3):165-171. [In Indonesian].
- Kusmana C., Setyobudiandi I., Hariyadi S., Sembiring A., 2015 [Sampling and bioecological analysis of coastal and marine biological resources]. IPB Press, 351 p. [In Indonesian].
- Lasabuda R., Lohoo A. V., Opa E. T., 2019 Ecological suitability of mangrove ecotourism in Labuan Uki Bay, Bolaang Mongondow Regency, North Sulawesi Province, Indonesia. *AES Bioflux* 11(1):41-50.
- Malik A., Rahim A., Sideng U., Rasyid, A., Jumaddin J., 2019 Biodiversity assessment of mangrove vegetation for the sustainability of ecotourism in West Sulawesi, Indonesia. *AACL Bioflux* 12(4):1458-1466.
- Matatula J., Pathibang M. P., Aryani N. K. A. D., Ngaji A. U. K., 2018 [Mangrove forest habitat conditions in Tanah Merah coastal beach East Nusa Tenggara]. *International Conference on Climate Change, Biodiversity, Food Security and Local Knowledge, Artha Wacana Christian University, Kupang, Indonesia, 3-4 September*. [In Indonesian].
- Mukhtar E., Raynaldo A., Novarino W., 2021 Carbon stock mapping using mangrove discrimination indices in Mandeh Bay, West Sumatra. *AACL Bioflux* 14(1):430-440.
- Murtini S., 2017 [The suitability and carrying capacity of the Wonorejo mangrove ecotourism area, Surabaya City]. *Proceedings of the National Seminar Geographical Education, Fish Unesa, Management of Indonesia's Maritime Potential*, pp. 220-227. [In Indonesian].
- Noor Y. S., Khazali M., Suryadiputra I. N. N., 2012 [Field guide to Indonesia mangroves]. *Wetland International Indonesia Programme, Bogor, Indonesia*, 220 p. [In Indonesian].

- Nugroho T. S., Fahrudin A., Yulianda F., Bengen D. G., 2018 [Analysis of land suitability and carrying capacity of mangrove ecotourism in the Muara Kubu mangrove area, West Kalimantan]. *Journal of Natural Resources and Environmental Management* 9(2):483-497. [In Indonesian].
- Opa E. T., Kepel R. C., Lasabuda R., Kusen J. D., Paruntu C. P., Djamaluddin R., Boneka F. B., Mantiri D. M. H., 2021 Ecological suitability of mangrove tourism in Mantehage Island as the outermost small island in North Sulawesi, Indonesia. *AAFL Bioflux* 14(1):120-129.
- Peristiwady T., 2006 [Fish-economically important marine fish in Indonesia. Identification Manual]. LIPI Press, Jakarta, 270 p. [In Indonesian].
- Rahayu S. M., Wiryanto, Sunarto, 2017 [Diversity of crustacean species in the mangrove area, Purworejo Regency, Central Java]. *Jurnal Sains Dasar* 6(1):57-65. [In Indonesian].
- Rini I., Setyobudiandi M., Kamal M., 2018 [Study of suitability, carrying capacity and ecotourism activities in the Lantebung mangrove area, Makassar City]. *Jurnal Pariwisata* 5(1):1-10. [In Indonesian].
- Rodiana L., Yulianda F., Sulistiono, 2019 [Study of suitability, carrying capacity and ecotourism activities in the Lantebung mangrove area, Makassar City]. *Journal of Fisheries and Marine Research* 3(2):194-205. [In Indonesian].
- Sadikin P. N., Arifin H. S., Pramudya B., Mulatsih S., 2017 Carrying capacity to preserve biodiversity on ecotourism in Mount Rinjani National Park, Indonesia. *Biodiversity* 18(3):978-989.
- Salim T., Maulany R.I., Barkey R. A., 2018 [Strategy for development of Tongke-Tongke mangrove ecotourism in Sinjai Regency]. *Jurnal Hutan dan Masyarakat* 10(2):268-282. [In Indonesian].
- Sari S. M., 2012 [Birds of mangrove forest]. PT Bina Ovivipari Semesta, Pontianak, Indonesia, 19 p. [In Indonesian].
- Saru A., 2013 [Unlocking the potential of green gold in coastal areas]. Masagena Press Makassar, Indonesia, 76 p. [In Indonesian].
- Setiyaningrum I. F., Harini R., Wirasanti N., 2020 [Community-based mangrove ecotourism management: a case study in Gedangan Village, Purwodadi Purworejo, Central Java Indonesia]. *Majalah Geografi Indonesia* 34(1):11-18. [In Indonesian].
- Sugiyono, 2014 [Educational research methods with quantitative, qualitative, and R & D approach]. Alfabeta, Bandung, Indonesia, 456 p. [In Indonesian].
- Sulistiono, Riani E., Asriansyah A., Walidi W., Tani D. D., Arta A. P., Retnoningsih S., Anggraeni Y., Ferdiansyah R., Wistati A., Rahayuningsih E., Panjaitan A. O., Supardan A., 2016 [Guidelines for inspection/identification of restricted fish species (mangrove crab/*Scylla* spp.)]. Center for Fish Quarantine and Biosafety Fish Quarantine Agency, Quality Control and Safety of Fishery Products, Indonesian Ministry of Marine and Fisheries Affairs, Jakarta, 34 p. [In Indonesian].
- Tefarani R., Nana K. T. M., Sri N., 2019 [Mangrove species diversity and zoning in Mangunharjo Village, Tugu District, Semarang City]. *Jurnal Life Science* 8(1):41-53. [In Indonesian].
- Tuwo A., 2011 [Coastal and marine ecotourism management: ecological, socio-economic, institutional and regional facilities approaches]. Brillan Internasional, Surabaya, 412 p. [In Indonesian].
- Vincentius A., Nessa M. N., Jompa J., Saru A., Nurdin N., Rani C., 2018 Influential factors analysis towards mangrove cover and production of demersal fish in Maumere Bay, Indonesia. *AAFL Bioflux* 11(3):810-822.
- Wardhani M. K., 2011 [Mangrove conservation area: an ecotourism potential]. *Jurnal Kelautan* 4(1):60-76. [In Indonesian].
- Winata A., Yuliana E., Hewindati Y. T., Djatmiko W. A., 2020 Assessment of mangrove carrying capacity for ecotourism in Kemujan Island, Karimunjawa National Park, Indonesia. *AES Bioflux* 12(1):83-96.
- Yanti D. I. W., Paruntu C. P., Kepel R. C., Mandagi S. V., Tabalessy R. R., Masengi M. C., 2021 Suitability index and carrying capacity of mangrove tourism on Jeflio Island, Indonesia. *AAFL Bioflux* 14(5):3145-3156.

- Yulianda F., 2007 [Marine Ecotourism as an Alternative to Utilization of Conservation-Based Coastal Resources]. Presented at Science Seminar 21 February 2007. MSP Department. Faculty of Fisheries and Marine Science. IPB. Bogor. [In Indonesian].
- Yulianda F., 2019 [Aquatic ecotourism: a concept of suitability and carrying capacity of marine and freshwater tourism]. IPB Press, 87 p. [In Indonesian].
- Yulianda F., Atmadipoera A. S., 2019 [Supporting capacity and ecotourism management plan for marine protected areas, a case model of Seribu Islands National Park]. IPB Press, 87 p. [In Indonesian].

Received: 14 August 2022. Accepted: 29 September 2022. Published online: xx November/December 2022.

Authors:

Salim Abubakar, Khairun University, Faculty of Fisheries and Marine Science Unkhair, Kampus II Jl. Jusuf Abdulrahman, 97719 Ternate, North Maluku, Indonesia, e-mail: mylasrinaldy@gmail.com

Rene Charles Kepel, Sam Ratulangi University, Faculty of Fisheries and Marine Science Unsrat, Jln. Kampus Unsrat Bahu, 95115 Manado, North Sulawesi, Indonesia, e-mail: renecharleskepel65@gmail.com

Rignolda Djamaluddin, Sam Ratulangi University, Faculty of Fisheries and Marine Science Unsrat, Jln. Kampus Unsrat Bahu, 95115 Manado, North Sulawesi, Indonesia, e-mail: rignolda@unsrat.ac.id

Nurhalis Wahidin, Khairun University, Faculty of Fisheries and Marine Science, Kampus II Jl. Jusuf Abdulrahman, 97719 Ternate, North Maluku, Indonesia, e-mail: nurhalisw@gmail.com

Winda Mercedes Mingkid, Sam Ratulangi University, Faculty of Fisheries and Marine Science, Kampus Unsrat, Jln. Kampus Unsrat Bahu, 95115 Manado, North Sulawesi, Indonesia, e-mail: wmingkid@unsrat.ac.id

Adnan Sjaltout, Wantasen, Sam Ratulangi University, Faculty of Fisheries and Marine Science, Jln. Kampus Unsrat Bahu, 95115 Manado, North Sulawesi, Indonesia, e-mail: awantasen@gmail.com

Roike Iwan Montolalu, Sam Ratulangi University, Faculty of Fisheries and Marine Science, Kampus Unsrat, Jln. Kampus Unsrat Bahu, 95115 Manado, North Sulawesi, Indonesia, e-mail: montolalu@unsrat.ac.id

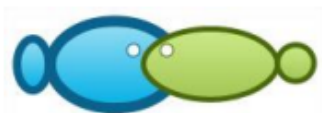
Desy Maria Helena Mantiri, Sam Ratulangi University, Faculty of Fisheries and Marine Science Unsrat, Kampus Unsrat, Jln. Kampus Unsrat Bahu, 95115 Manado, North Sulawesi, Indonesia, e-mail: dmh_mantiri@unsrat.ac.id

This is an open-access article distributed under the terms of the Creative Commons Attribution License, which permits unrestricted use, distribution and reproduction in any medium, provided the original author and source are credited.

How to cite this article:

Abubakar S., Kepel R. C., Djamaluddin R., Wahidin N., Mingkid W. M., Wantasen A. S., Momtolalu R. I., Mantiri D. M. H., 2022 2016 Suitability and carrying capacity of mangrove ecosystem for ecotourism in Jailolo Bay, West Halmahera, Indonesia. *AAFL Bioflux* 15(6):xxx-xxx.

Acceptance Letter/Certificate



Bioflux (publishing house)
54 Ceahlau Street,
Cluj-Napoca 400488,
Romania, European Union

Certificate

This certificate shows that the manuscript entitled „**Suitability and carrying capacity of mangrove ecosystem for ecotourism in Jailolo Bay, West Halmahera, Indonesia**”, authored by Salim Abubakar, Rene C. Kepel, Rignolda Djameluddin, Nurhalls Wahidin, Winda Mercedes Mingkid, Adnan S. Wantasen, Roike Iwan Montolalu, Desy M. H. Mantiri, submitted to our journal *AAFL Bioflux - International Journal of the Bioflux Society*, has been accepted for publication.

Thank you for your participation!

Cordially yours,

Editor,
Tudor Păpuc

Senior Researcher
Ioan Valentin Petrescu-Mag, PhD
editor-in-chief

