

The structural modification of cassava starch using a saline water pretreatment

by Gerald Tamuntuan 6

Submission date: 28-Jun-2023 10:29AM (UTC+0700)

Submission ID: 2123767456

File name: 6_Sangian_et_al_2018_The_structural_modification_of_cassava.pdf (2.56M)

Word count: 4190

Character count: 22761

1 The structural modification of cassava starch using a saline water pretreatment

Hanny Frans SANGIAN^{1*}, Richard TELLENG¹, Irfan ARUAN¹, Handy Indra Regain MOSEY¹,
Gerald Hendrik TAMUNTUAN¹

1 Abstract

The cassava has been modified successfully by using the saline water, which was abundantly available on the planet. The biomass was submerged in saline waters that salt concentrations were altered at 0, 3.5 percent (seawater) and 10 percent (w/w) and were kept 5 days. After recovery by washing steps, the treated solids were characterized by using XRD (*X-ray diffraction*), FTIR (*Fourier transform infra-red*), and SEM (*Scanning electron microscopic*). The results showed that the XRD pattern of saline water pretreatment decreased significantly. The biggest decrease of X-ray intensity occurred at around 18°. Meanwhile, the fingerprint of FTIR revealed the transmittance intensity of infra-red ray of saline water treated solid inclined for all wave constant numbers, suggesting that many hydrogen bonds were disconnected. Those findings also were enhanced by SEM pictures that showed the change of surface morphology of treated biomass. It was indicative that cassava structure was modified becoming more textured after employing saline water pretreatment. This work is an innovative finding to gradually substitute commercial ionic liquids that are very expensive with saline water for biomass pretreatment.

Keywords: cassava; saline water; pretreatment; amorphous structure.

Practical Application: The saline water-treated cassava can be proceeded to produce textured food, sugar, alcohol and biofuels.

1 Introduction

2 Currently, the biomass has been converted into reducing sugars and renewable biofuels, such as ethanol (Hernoux et al., 2013). Generally, the starch can be found from plants, which grow in tropical- and sub-tropical lands the following corn, tubers, cassava, wheat, sago and rice (Nafchi et al., 2012; Pancha-Arnon & Uttapap, 2013). Actually, the raw starch biomass contents are starch itself and a small amount of cellulose, hemicellulose, and lignin (Zhang et al., 2013). The cassava starch has been investigated and attracted many scientists who developed them become 16 more valuable materials, like modern food and alcohol (Souto et al., 2016; Silva et al., 2013; Gunawan et al., 2015; Pereira & Leonel, 2014).

Investigators, who developed the starch, concentrated on its crystallinity, surface morphology and its structural modification as previously reported (Alcazar-Alay & Meireles, 2015). Many authors concluded that pretreatments were the most crucial step of overall processes obtaining more valuable starch. One of the works was aimed at changing the starchy crystal from well arranged- into more amorphous forms (Neelam et al., 2012).

Acids and alkaline were employed to pretreat starch that purposed to alter its crystallinity and the result showed the enzymatic hydrolysis improved significantly (Lopez et al., 2011). Another chemical treatment on residual cassava was employed to analyze the acidity and microbial growth as reported by author

(Souza et al., 2013). As the high pressure and temperature, sub- and supercritical methods have been also 2 applied to modify the biomass structure (Manzanares et al., 2012). They investigated that the explosion method in which pressure decreased abruptly, could alter biomaterial structure and breakdown the glycosidic connections. Commercial ionic liquid, which was expensive has been also employed for starch treatment (Yakubov et al., 2015).

The chemical agents like acids, alkaline and ionic liquids, which were used on starch pretreatment generated pollution over soil and water and also were poisonous. Sub- and supercritical methods, which were performed at high pressure and temperature, were considered insecure and expensive (Sangian et al., 2015). The safety, clean and technologies for pretreatment should be developed and fulfilled conditions and standards of environmentally-friendly procedures.

The present investigation is to change the structure of cassava starch performing saline water which was abundantly available. According to intensive references study conducted, saline water has not been employed for cassava starch pretreatment for structural alteration. Procedures are as follows: biomass drying and milling, washing step and characterization. The crystallinity of treated solids and native cassava are measured using XRD, SEM, and FTIR.

Received 08 June, 2017

Accepted 08 Jan., 2018

¹Physics Department, School of Mathematics and Natural Sciences, Sam Ratulangi University, Bahu Campus Street, Manado, SULUT, Indonesia

*Corresponding author: hannysangian@yahoo.co.id

2 Materials and methods

The starch (*cassava*) was obtained from a farmer in a village, Minahasa District, North Sulawesi, Indonesia. Procedures of pretreatment are as follows: The cassava was peeled and cut into small parts and they were dried under sunlight for days. When dried, cassava was milled until becoming powder using a machine and the particle size was smaller than 100 mesh. Particles were mixed with saline water whose salt concentrations of solution were varied at 3.5 and 10 percent (w/w). The control was an original substrate, which was not conducted pretreatment. The saline water that was got from sea, has an average salt concentration around 3.5 percent as previously reported (Jakhrani et al. 2012) while, the other solution, which has salt concentration 10 percent (w/w), was prepared by mixing 100 grams commercial salt with 900 grams fresh water.

The pretreatment technique was adapted from some reports using the commercial ionic liquids that were conducted at high temperature (Thomas et al., 2011). Meanwhile, the present study was carried out at low temperatures and used saline solution, which was very cheap. The temperature changed naturally that followed the alteration of room temperature, which varied between 25 °C and 30 °C and the process was kept for 5 days. The wash step was applied after pretreatment-treated particles were neutralized by washing with fresh water and then obtained using filter via funnel flask. The recovered solids were dried under sunlight for days until its weight was constant. The treated- and dried solids were weighted and then isolated inside plastic bags prior to characterizations.

The crystallinity change of treated substrates were characterized using XRD (PANalytical, Type: Xpert Pro), FTIR (SHIMADZU, type: IR PRESTIGE 21) and surface morphologies were pictured by SEM (FEI, Type: Inspect S50) and the place of measurement was at State Univ. of Malang East Java. The XRD measurement has started an angle (2θ) at 10.01° and ended at 89.9° and conducted at 25 °C. The current flowed to the circuit was 35mA and voltage difference was of 40kV. The wavelength of K-alpha was of 1.54Å as K-Beta was set at 1.39Å. While, the wavelength constants used for FTIR characterization were altered from 400 to 4000/cm, which was similar to a previous report (Adebisi et al., 2014). The SEM was employed to understand the change of surface morphology with keeping conditions the following: voltage difference was at 15kV; magnification was of 1000x; WD and spot were set at 10.8mm and 5.5, respectively.

The study was to analyze the change of intensity height of X-Ray which was diffracted for both solids, treated- and native solids. The XRD patterns shown were compared to some reports that related to present work. Meanwhile, the bonds vibrations were analyzed through the fingerprint shown by the FTIR diagram. The variation of transmitted infra-red rays of treated biomass was compared to the original substrate.

3 Results and discussion

3.1 XRD patterns

Figure 1 shows the XRD pattern of treated substrate and compared to that of original biomass, or without pretreatment. The dominant intensities were located at angles (2θ): 10.99°, 14.59°, 14.87°, 15.17°, 16.87°, 17.00°, 17.98°, 18.01°, 23.00°,

30.29°, 33.00° and 35°, which were comparable with other reports (Qin et al., 2016).

The XRD pattern of starch, especially its peaks is much more complicated than that of cellulose. Scientists who concentrated on cellulose and starch study found that starch was also more amorphous than cellulosic materials. Authors (Marimuthu et al., 2013) tried to simulate the relation of those angles and reflector planes in (hkl) indices and focused at angles (2θ): 19°, 17°, 23° and 30°.

The main peaks of X ray intensity generated by reflector planes in starch crystal were relatively comparable with those of cellulose. Previous investigations reported that peaks of cellulosic crystal were dominated at 14.26, 16.77, 22.58 and 34.6 as previously published works (Zhao et al., 2012). Meanwhile, the lowest valley that belonged to amorphous parts was at 18.3 (Park et al., 2010). The starch has two highest peaks located at 18° and 23°, which were a significant difference with a XRD pattern of cellulose that was only one dominant peak at 23°.

The damage of crystallinity of treated cassava starch can be analyzed the decrease of intensity of peak as seen in Table 1. The graph showed that the intensity of diffracted X-Rays significantly declined around 18°, when the substrate was treated by 3.5- and 10 percents salt of solutions. The peak heights both treated solids were relatively similar at around 18° but significantly differed at above 23° in which 10 percents pretreatment was lower than that of 3.5 percents- and original solids. It was also found that the positions of angles 2θ of treated solid slightly shifted to the right 15.20, 17, 12 and 18, 12 ect from position of original starch as previously described. The space distances of the crystalline cube (d-spacing) of treated solid mostly decreased significantly, which means that the surface area improved. The d-spacing of original biomass were 5.84, 5.22, 4.93 and 3.86 compared to those of pretreatment declined to 5.83, 5.18, 4.89 and 3.84. An XRD patterns as previously described shows and proves that the crystallinity of pretreated biomass (cassava) was transformed, or modified compared to that of original solid (Correia et al., 2012; Deka & Sit, 2016).

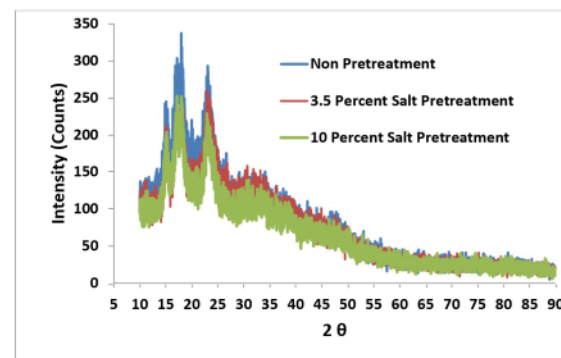


Figure 1. XRD patterns of solid cassava treated by 3.5, 10 percent salts of saline solution (red & green lines) and compared with non-pretreatment (blue line).

3.2 FTIR spectra

An XRD characterization was compared with FTIR measurement to investigate the solid structures and chemical bonds vibrations. The wavelength constants, 400-4000/cm, were scanned into the sample and those transmitted were analyzed. Figure 2 shows the FTIR spectra of original biomass and treated substrates. These data shows the wavelength constants (some references called vibration

frequencies) both substrates but not all absorbance modes were displayed in FTIR fingerprint diagram. The wavelength constants for non-pretreatment are dominated by many numbers as follows (in 1/cm): 3053-3600 represented by O-H stretching between polysaccharide connections; 2891.3-2933.73 belonged to C-H symmetrical stretching; 1317 was a bending motion in the plane CH, 1014.56 and 1076 modes were probably the vibrations of C-C,

Table 1. Intensities of diffracted X-Ray of treated- and control solids at around $2\theta=18^\circ$ plane.

Native solid		3.5% salt in ionic solution		10% salt in ionic solution	
2θ	Intensity	2θ	Intensity	2θ	Intensity
17.81	295	17.81	221	17.81	227
17.83	248	17.83	206	17.83	230
17.85	237	17.85	194	17.85	212
17.87	273	17.87	219	17.87	209
17.89	292	17.89	210	17.89	230
17.91	285	17.91	202	17.91	206
17.93	295	17.93	231	17.93	227
17.95	282	17.95	203	17.95	222
17.97	283	17.97	198	17.97	229
17.99	337	17.99	234	17.99	220
18.01	286	18.01	215	18.01	251
18.03	288	18.03	216	18.03	239
18.05	278	18.05	229	18.05	215
18.07	279	18.07	222	18.07	228

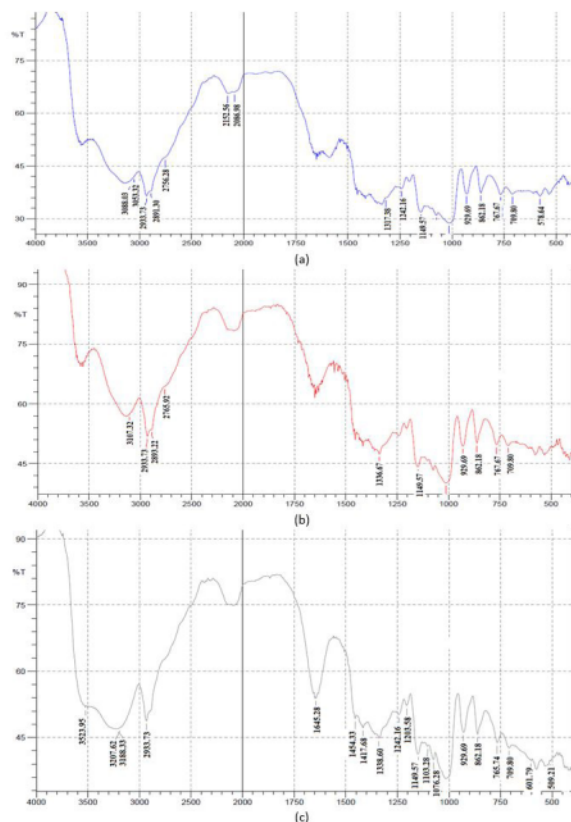


Figure 2. The fingerprints of FTIR spectra of native cassava (a) and 3.5%- and 10% salt pretreated substrates (b & c).

C-OH, C-H bonds; 862.18 and 929.69 were modes of C-O-C, C-C-O, and C-C-H stretching motions.

Absorbance's numbers of 1627, 1516 and 1446, which did not display in the finger-print, were bonds motions of as OH bending vibration of absorbed water, resonant of C=C aromatic stretching and H-C-H and O-C-H in-plane bending, respectively which confirmed investigations from some authors (Correia et al., 2012; Cai et al., 2014; Bajer et al., 2013) and were relatively comparable as previously works for cellulosic biomass (Kumar et al., 2014; Poletto et al., 2014). From data obtained

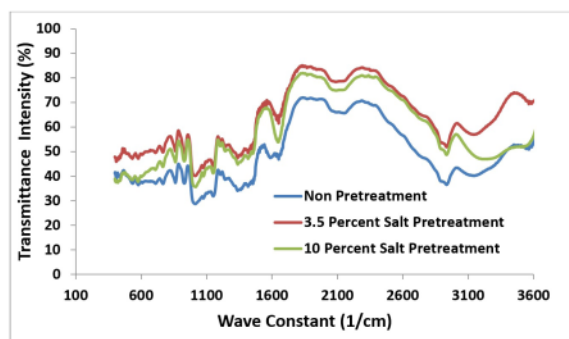


Figure 3. The FTIR fingerprints of cassava powder conducted pretreatment 3.5 percent salt of saline water (red line) and compared with non-pretreatment (blue line).

that all measurable quantities, such as intensity, corr. intensity, base (H), base (L), area and corr. area of treated solids changed significantly. The vibration around 1645.2/cm of treated solids changed significantly, whereby two valleys and one peak appeared for native solid. After pretreatment, the peak totally disappeared from the fingerprint of both samples measured.

As presented in Figure 2, valley and peak around 3623.96/cm occurred an alteration significantly. After 10 percent salt employed, valley and peak were diminished and relatively shifted to the right, whereby the wave constant changed to 3523.95/m. The significant change also occurred at wavelength above 3100/cm, which the infra-red photon transmitted of 10 percent-treated solid declined very much as described in Figure 3. It also added facts that saline water could modify the biomass structure, especially starch that was useful to convert it become more valuable materials, or food. Generally, transmitted infra-red waves through substrates significantly changed for all pretreatments. The intensity heights of infra-red photons transmitted for pretreated biomass were increased that related to many H bonds were broken down. These were a strong indication the treated substrates were well-modified after pretreatment as shown in Figure 3 which was relatively similar to other reports (Zhang et al., 2014).

3.3 SEM pictures

Figure 4 presents the SEM images of starch that was treated by 3.5 and 10 percent of salt and compared with native solid. The samples were shot whose picture was magnified by 1000x

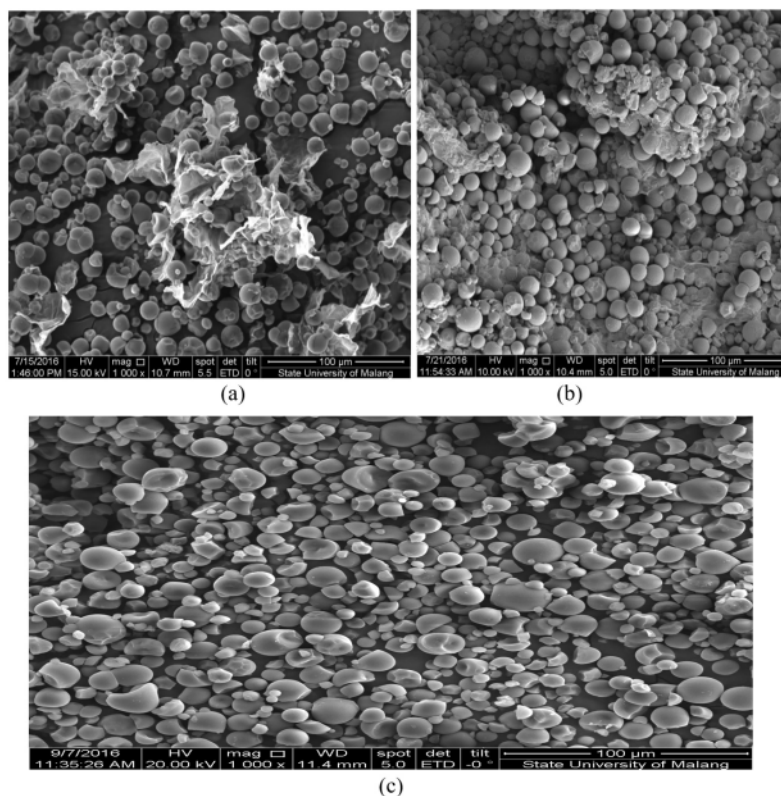


Figure 4. SEM Pictures of native cassava (a), 3.5%- and 10% salt of saline solutions (b & c) magnified at 1000x.

as shown in figures. The potential difference applied was altered each sample, whereby 15kV for native solid, 10kV for 3.5 percent-pretreated substrates and 20 kV for 10 percent pretreated sample. As shown in figure, the surface morphology of non-pretreatment solid was brighter than that of treated substrates. The shape all particles which were shown has not yet defects and damage. All images exposed that the form of particles are close to round and oval look like, which verified the study conducted previously (Correia et al., 2012).

When the substrate was treated by saline water taken from Manado Beach (concentration 35/1000 of salt), particles shape appeared defective. The surface of the sample was scattered much dust and the picture was blurred because parts of particles were ruined and demolished. For many particles were destroyed becoming dust, their dimensions were reduced significantly so the materials were more porous than that of native solids.

In the middle of round oval particles appeared a formless substance that was likely consisted of other fibers, like cellulose, lignin, and hemicellulose. The surface area of treated substrates significantly improved and was more textured morphology (Utrilla-Coello et al., 2014). The starch that has been modified was not only good for food but also was easily hydrolyzed into reducing sugars using the catalyst as proposed by investigators (da Rosa Zavareze et al., 2010).

When 10 percent salt introduced, the surface became clearer than those of previous pictures. It was indicative that saline agents could dissolve other parts inside biomass, like lignin and hemicellulose. The many oval- and round shapes were damaged significantly and their sizes decreased. There are many small particles, which appears and attaches on the bigger particles (starch). According to shapes and being compared to the reference, those particles were salt dominated by NaCl that was comparable with work reported previously (Tran et al., 2011). The salt particles attached on starch substances through electrical interaction and bridged between polysaccharide chains. The bonds formed were fiber-OH-Cl-Na-OH-fiber and so on. The dust that showed in Figure 4b was removed totally after 10 percent salt was employed for pretreatment. It indicated that higher concentration of salt in saline water could dissolve and cleared of other fibers inside biomass.

4 Conclusions

The saline water has been employed to modify the cassava structure that was the most important requirement for textured food, sugar and alcohol productions. If compared with commercial ionic liquids, which was very expensive and poisonous, saline water was free, abundant and environmentally-friendly. The disadvantage for using this new solvent was the pretreatment was conducted for 5 days. However, it was compensated by zero energy usage since pretreatment process was not powered by electricity.

References

Adebisi, F., Adedaya, A., Oluwaseye, A., Adekunle, F., Michael, A., Olutayo, O., Clement, A., Ikokoh, P., Rasheed, K., & Ademola, A. (2014). Instrumental and chemical characterization of moringa

oleifera lam root starch as an industrial biomaterial. *Research in Pharmaceutical Biotechnology*, 5(1), 7-12.

Alcazàr-Alay, S. C., & Meireles, M. A. A. (2015). Physicochemical properties, modification and application of starches from different botanical sources. *Food Science and Technology*, 35(2), 215-236. <http://dx.doi.org/10.1590/1678-457X.6749>.

Bajer, D., Kaczmarek, H., & Bajer, K. (2013). The structure and properties of different types of starch exposed to UV radiation: a comparative study. *Carbohydrate Polymers*, 98(1), 477-482. <http://dx.doi.org/10.1016/j.carbpol.2013.05.090>. PMID:23987371.

Cai, J., Cai, C., Man, J., Yang, Y., Zhang, F., & Wei, C. (2014). Crystalline and structural properties of acid-modified lotus rhizome C-type starch. *Carbohydrate Polymers*, 102, 799-807. <http://dx.doi.org/10.1016/j.carbpol.2013.10.088>. PMID:24507349.

Correia, P., Cruz-Lopes, L., & Beirão-da-Costa, L. (2012). Morphology and structure of chestnut starch isolated by alkali and enzymatic methods. *Food Hydrocolloids*, 28(2), 313-319. <http://dx.doi.org/10.1016/j.foodhyd.2011.12.013>.

Deka, D., & Sit, N. (2016). Dual modification of taro starch by microwave and other heatmoisture treatments. *International Journal of Biological Macromolecules*, 92, 416-422. <http://dx.doi.org/10.1016/j.ijbiomac.2016.07.040>. PMID:27423413.

Gunawan, S., Widjaja, T., Zullaikah, S., Ernawati, L., Istianah, N., Aparamarta, H. W., & Prasetyoko, D. (2015). Effect of fermenting cassava with *Lactobacillus plantarum*, *Saccharomyces cerevisiae*, and *Rhizopus oryzae* on the chemical composition of their flour. *International Food Research Journal*, 22(3), 1280-1287.

Hernoux, A., Lévêque, J. M., Lassi, U., Molina-Boisseau, S., & Marais, M. F. (2013). Conversion of a non-water soluble potato starch waste into reducing sugars under non-conventional technologies. *Carbohydrate Polymers*, 92(2), 2065-2074. <http://dx.doi.org/10.1016/j.carbpol.2012.11.048>. PMID:23399259.

Jakhri, A. Q., Samo, S. R., Sobuz, H. R., Uddin, M. A., Ahsan, M. J., & Hasan, N. M. S. (2012). Assessment of Dissolved Salts Concentration of Seawater in the Vicinity of Karachi. *International Journal of Structural and Civil Engineering*, 1(2), 61-69.

Kumar, A., Negi, Y. S., Choudhary, V., & Bhardwaj, N. K. (2014). Characterization of cellulose nanocrystals produced by acid-hydrolysis from sugarcane bagasse as agro-waste. *Journal of Materials Physics and Chemistry*, 2(1), 1-8.

Lopez, Y., Gullon, B., Puls, J., Parajo, J. C., & Martin, C. (2011). Dilute acid pretreatment of starch-containing rice hulls for ethanol production. *Holzforchung*, 65(4), 467-473. <http://dx.doi.org/10.1515/hf.2011.082>.

Manzanares, P., Ballesteros, I., Negro, M. J., Oliva, J. M., Gonzalez, A., & Ballesteros, M. (2012). Biological conversion of forage sorghum biomass to ethanol by steam explosion pretreatment and simultaneous hydrolysis and fermentation at high solid content. *Biomass Conversion and Biorefinery*, 2(2), 123-132. <http://dx.doi.org/10.1007/s13399-012-0040-8>.

Marimuthu, M., Venkatesh, M., & Poongodi, M. (2013). X-ray diffraction analysis of nano sized seed powder of white colored germplasm of velvet bean (*Mucuna pruriens*), an underutilized wild south indian food legume. *Nano Biomedicine and Engineering*, 5(3), 121-126. <http://dx.doi.org/10.5101/nbe.v5i3.p121-126>.

Nafchi, A. M., Alias, A. K., Mahmud, S., & Robal, M. (2012). Antimicrobial, rheological, and physicochemical properties of sago starch films filled with nanorod-rich zinc oxide. *Journal of Food Engineering*, 113(4), 511-519. <http://dx.doi.org/10.1016/j.jfoodeng.2012.07.017>.

- Neelam, K., Vijay, S., & Lalit, S. (2012). Various techniques for the modification of starch and the applications of its derivatives. *International Research Journal of Pharmacy*, 3(5), 25-31.
- Park, S., Baker, J. O., Himmel, M. E., Parilla, P. A., & Johnson, D. K. (2010). Cellulose crystallinity index: measurement techniques and their impact on interpreting cellulase performance. *Biotechnology for Biofuels*, 3(1), 1-10. <http://dx.doi.org/10.1186/1754-6834-3-10>. PMID:20497524.
- Pereira, B. L. B., & Leonel, M. (2014). Resistant starch in cassava products. *Food Science and Technology*, 34(2), 298-302. <http://dx.doi.org/10.1590/fst.2014.0039>.
- Poletto, M., Ornaghi, H. L. Jr., & Zattera, A. J. (2014). Native Cellulose: Structure, Characterization and Thermal Properties. *Materials*, 7(9), 6105-6119. <http://dx.doi.org/10.3390/ma7096105>. PMID:28788179.
- Puncha-Arnon, S., & Uttapap, D. (2013). Rice starch vs. rice flour: Differences in their properties when modified by heat-moisture treatment. *Carbohydrate Polymers*, 91(1), 85-91. <http://dx.doi.org/10.1016/j.carbpol.2012.08.006>. PMID:23044108.
- Qin, Y., Liu, C., Jiang, S., Xiong, L., & Sun, Q. (2016). Characterization of starch nanoparticles prepared by nanoprecipitation: Influence of amylose content and starch type. *Industrial Crops and Products*, 87, 182-190. <http://dx.doi.org/10.1016/j.indcrop.2016.04.038>.
- Sangian, H. F., Ranggina D., Ginting, G. M., Purba, A. A., Gunawan, S., Widjaja, A. (2015). Study of the preparation of sugar from high-lignin lignocellulose applying subcritical water and enzymatic hydrolysis: synthesis and consumable cost evaluation. *Scientific Study & Research Chemistry & Chemical Engineering, Biotechnology, Food Industry*, 16(1), 13-27.
- Silva, E. C., Sobrinho, V. D. S., & Cereda, M. P. (2013). Stability of cassava flour-based food bars. *Food Science and Technology*, 33(1), 192-198. <http://dx.doi.org/10.1590/S0101-20612013005000025>.
- Souto, L. R. F., Caliari, M., Soares, M. S. Jr., Fiorda, F. A., & Garcia, M. C. (2016). Utilization of residu from cassava starch processing for fermentable sugar by enzymatic hydrolysis. *Food Science and Technology*, 37(1), 19-24. <http://dx.doi.org/10.1590/1678-457x.0023>.
- Souza, T. A. C., Soares Júnior, M., Campos, M. R. H., Souza, T. S. C., & Bandeira, L. C. (2013). The effect of chemical treatments on the pH & microbial flora of cassava residues during storage. *Food Science and Technology*, 33(3), 457-462. <http://dx.doi.org/10.1590/S0101-20612013005000070>.
- Thomas, M. F., Li, L.-L., Handley-Pendleton, J. M., van der Lelie, D., Dunn, J. J., & Wishart, J. F. (2011). Enzyme activity in dialkyl phosphate ionic liquids. *Bioresource Technology*, 102(24), 11200-11203. <http://dx.doi.org/10.1016/j.biortech.2011.09.069>. PMID:22001053.
- Tran, R. T., Naseri, E., Kolasnikov, A., Bai, X., & Yang, J. (2011). A new generation of sodium chloride porogen for tissue engineering. *Biotechnology and Applied Biochemistry*, 58(5), 335-344. <http://dx.doi.org/10.1002/bab.44>. PMID:21995536.
- Utrilla-Coello, R. G., Hernández-Jaimes, C., Carrillo-Navas, H., González, F., Rodríguez, E., Bello-Pérez, L. E., Vernon-Carter, E. J., & Alvarez-Ramirez, J. (2014). Acid hydrolysis of native corn starch: Morphology, crystallinity, rheological and thermal properties. *Carbohydrate Polymers*, 103, 596-602. <http://dx.doi.org/10.1016/j.carbpol.2014.01.046>. PMID:24528771.
- Yakubov, G. E., Zhong, L., Li, M., Boehm, M. W., Xie, F., Beattie, D. A., Halley, P. J., & Stokes, J. R. (2015). Lubrication of starch in ionic liquid-water mixtures: Soluble carbohydrate polymers form a boundary film on hydrophobic surfaces. *Carbohydrate Polymers*, 133, 507-516. <http://dx.doi.org/10.1016/j.carbpol.2015.06.087>. PMID:26344308.
- Zavareze, E. R., Storck, C. R., Castro, L. A. S., Schirmer, M. A., & Dias, A. R. G., Rosa Zavareze, E., Storck, C. R., Castro, L. A. S., Schirmer, M. A., & Dias, A. R. G. (2010). Effect of heat-moisture treatment on rice starch of varying amylose content. *Food Chemistry*, 121(2), 358-365. <http://dx.doi.org/10.1016/j.foodchem.2009.12.036>.
- Zhang, J., Fang, Z., Deng, H., Zhang, X., & Bao, J. (2013). Cost analysis of cassava cellulose utilization scenarios for ethanol production on flowsheet simulation platform. *Bioresource Technology*, 134, 298-306. <http://dx.doi.org/10.1016/j.biortech.2013.02.041>. PMID:23500588.
- Zhang, Y., Zeng, H., Wang, Y., Zeng, S., & Zheng, B. (2014). Structural characteristics and crystalline properties of lotus seed resistant starch and its prebiotic effects. *Food Chemistry*, 155, 311-318. <http://dx.doi.org/10.1016/j.foodchem.2014.01.036>. PMID:24594190.
- Zhao, D., Li, H., Zhang, J., Fu, L., Liu, M., Fu, J., & Ren, P. (2012). Dissolution of cellulose in phosphate-based ionic liquids. *Carbohydrate Polymers*, 87(2), 1490-1494. <http://dx.doi.org/10.1016/j.carbpol.2011.09.045>.

The structural modification of cassava starch using a saline water pretreatment

ORIGINALITY REPORT

24%

SIMILARITY INDEX

21%

INTERNET SOURCES

10%

PUBLICATIONS

2%

STUDENT PAPERS

PRIMARY SOURCES

1	doaj.org Internet Source	7%
2	www.researchgate.net Internet Source	5%
3	eprints.itn.ac.id Internet Source	2%
4	mafiadoc.com Internet Source	2%
5	Submitted to Oregon State University Student Paper	1%
6	Nancy Alvarado, Romina L. Abarca, José Urdaneta, Julio Romero, María José Galotto, Abel Guarda. "Cassava starch: structural modification for development of a bio-adsorber for aqueous pollutants. Characterization and adsorption studies on methylene blue", Polymer Bulletin, 2020 Publication	1%

7	Internet Source	1 %
8	bioresources.cnr.ncsu.edu Internet Source	1 %
9	Submitted to Seoul National University Student Paper	1 %
10	www.scirp.org Internet Source	<1 %
11	link.springer.com Internet Source	<1 %
12	repository.unhas.ac.id Internet Source	<1 %
13	www.diva-portal.org Internet Source	<1 %
14	Hashmi, Muzna, Qining Sun, Jingming Tao, Tyrone Wells, Amer Ali Shah, Nicole Labbé, and Arthur J. Ragauskas. "Comparison of autohydrolysis and ionic liquid 1-butyl-3-methylimidazolium acetate pretreatment to enhance enzymatic hydrolysis of sugarcane bagasse", Bioresource Technology, 2016. Publication	<1 %
15	mdpi-res.com Internet Source	<1 %
16	www.scielo.br Internet Source	<1 %

<1 %

17

N. A. Rahman, D. A. Anggorowati, F. E. K. Rastini, L. Mustiadi, M. Ajiza. "Characteristics of briquettes from bagasse charcoal using XRD and FTIR analysis", AIP Publishing, 2021

Publication

<1 %

18

Ziyu Wang, Pranita Mhaske, Asgar Farahnaky, Stefan Kasapis, Mahsa Majzooobi. "Cassava starch: Chemical modification and its impact on functional properties and digestibility, a review", Food Hydrocolloids, 2022

Publication

<1 %

19

Sumedha M. Amaraweera, Chamila Gunathilake, Oneesha H. P. Gunawardene, Nimasha M.L. Fernando et al. "Tuning the Chemical and Thermo-Mechanical Properties of Cassava Starch Thin Films to Produce Biodegradable Packaging Materials", Research Square, 2021

Publication

<1 %

Exclude quotes On

Exclude matches Off

Exclude bibliography On